

# COINS & ANTIQUITIES

Thursday 16 December 2010

The Swedenborg Hall

20-21 Bloomsbury Way

London WC1A 2TH



Timeline  
*Auctions*



TimeLine Auctions take place at the Swedenborg Hall which is situated within 200 metres of the British Museum in Bloomsbury Way, London WC1.

We are pleased to receive entries for the forthcoming auctions, especially collections of fine and rare coins and ancient art and antiquities, groups or single items.

Coins, Antiquities and Ancient Art:  
17 and 18 March 2011 [closing for entries 21 January 2011]

TimeLine Auctions is a dynamic, competitive company operating auctions in a convenient central London location, within five minutes walking distance of Holborn, Tottenham Court Road and Russell Square underground stations. Viewing is available in the same premises prior to the day of the auction. Bidding takes place in the room, over the telephone, by registered absentee bidding and increasingly online.

TimeLine Auctions offers both buyers and sellers a confidential and professional service.

We are also happy to arrange private treaty sales, and probate and insurance valuations. Contact TimeLine Auctions to discuss your requirements.

Register or leave absentee bids online at: [www.timelineauctions.com](http://www.timelineauctions.com)

*TimeLine*  
*Auctions*



# COINS & ANTIQUITIES

Thursday 16 December 2010

The Swedenborg Hall

20-21 Bloomsbury Way

London WC1A 2TH

Coins: 9.30am

Antiquities: 1.00pm

## Head Office

TimeLine Auctions Limited  
PO Box 193  
Upminster  
RM14 3WH, UK

## Website

[www.timelineauctions.com](http://www.timelineauctions.com)

## Viewing

Wednesday 15 December 11am to 5pm

Thursday 16 December

Coins 9am to 9:30am

Antiquities 12 noon - 1pm

## Reception

Wednesday 15 December 6pm to 7:30pm

## Bids

+44 (0) 1708 222824

+44 (0) 1708 225689 fax

[bids@timelineauctions.com](mailto:bids@timelineauctions.com)

Please note that absentee bids should be submitted no later than 9pm on Tuesday 14 December 2010

Bidding by telephone will only be arranged for any lot with a lower estimate in excess of £400, and by arrangement prior to Wednesday 15 December 2010.

**Sale Number: 5 & 6**

**Catalogue: £15**

## Head of Department

Coins: Christopher Wren

Antiquities: Brett Hammond

## Auctioneer

Robin Baker

## General Enquiries

+44 (0) 1708 222384

[enquiries@timelineauctions.com](mailto:enquiries@timelineauctions.com)

Coins: Tanja Maijala

Antiquities: Stephen Pollington

Please see page 2 for bidder information including after-sale collection and shipment

Please see page 126 and 127 for Terms and Conditions and Absentee Bid Form (also downloadable from our website)

## Illustrations

Front cover: Lot 4 and Lot 348

Back cover: Lot 479

## TimeLine Auctions Limited

Registered No. 6873501

VAT Registered No. 979 3197 56

Registered Office: Berry Lodge

St Mary's Lane, Upminster, RM14 3PH


## Coins: Thursday 16 December 2010 at 9.30am

<b>Greek</b>	<b>3</b>
<b>Celtic</b>	<b>4</b>
<b>Roman &amp; Byzantine</b>	<b>9</b>
<b>Anglo-Saxon &amp; Norman</b>	<b>14</b>
<b>English Medieval</b>	<b>15</b>
<b>Milled</b>	<b>18</b>
<b>Scottish &amp; Irish</b>	<b>21</b>
<b>Miscellaneous World, Tokens</b>	<b>22</b>

## Antiquities: Thursday 16 December 2010 at 1.00pm

<b>Egyptian</b>	<b>30</b>
<b>Greek</b>	<b>36</b>
<b>Roman &amp; Byzantine</b>	<b>48</b>
<b>Geological &amp; Stone Age</b>	<b>76</b>
<b>Bronze Age</b>	<b>78</b>
<b>Celtic Iron Age</b>	<b>88</b>
<b>Saxon &amp; Viking</b>	<b>94</b>
<b>Medieval &amp; Post Medieval</b>	<b>102</b>
<b>American and Eastern</b>	<b>119</b>
<b>Groups</b>	<b>126</b>

### Bidding

This is a rostrum auction and there will be live internet bidding through [www.the-sale-room.com](http://www.the-sale-room.com) and [www.liveauctioneers.com](http://www.liveauctioneers.com). The buyer's premium is 15% and is subject to VAT (internet bidding is subject to additional charge of 3% + VAT). TimeLine Auctions is not responsible for any missed lots or bids due to network speed or down-time. Bidders are reminded that our website carries high-resolution enlargeable colour images of all of the items illustrated in this catalogue, together with other items (The symbol  indicates that the item, while not illustrated in this catalogue, can be viewed on our website). A Absentee Bid Form is included at the back of this catalogue and can be mailed, faxed or emailed, to reach us by no later than 9pm GMT on Tuesday 14 December 2010. Alternatively, please register on our website and record your absentee bids via your online account: [www.timelinauctions.com](http://www.timelinauctions.com). Please do not consider your commission form to have been successfully lodged unless you have received an acknowledgement from us.

### Collection and Storage

All lots will be available for collection from The Swedenborg Hall up to 7pm on the day of the sale, after which time they will be sent for storage. Lots will be available from our Essex premises from Monday 20 December 2010, after which storage charges may apply. Shipping quotes can be arranged by contacting Tanja Majjala: [shipping@timelinauctions.com](mailto:shipping@timelinauctions.com)

### Notice to Buyers

Some lots will require export licences in order to leave the UK or EU, please contact us for advice if required. We try to provide information regarding general condition, restorations, repairs and damage for each lot but this is necessarily subjective. The absence of specific information does not imply that the lot is free from defects or that it is in good condition. Bidders should satisfy themselves in all respects by personal inspection before bidding.

### How to Find the Auction Venue

The Swedenborg Hall is located in the heart of London, only about 200 meters from Great Russell Street and The British Museum. The nearest London Underground Stations are Holborn and Russell Square.

### Local Hotels

There are several hotels within a short walking distance including The Holiday Inn and The Thistle Hotel in Bloomsbury.



# Antiquities

Afternoon Session

1:00pm



Lots

300 - 691



301

**300 Egyptian Bronze Figurine.** Circa 664-525 BC, Saite Period. A cast bronze figure of a human male wearing a loincloth and headdress; his posture advancing with straight arms; the base rectangular with attachment spike beneath. 36 grams, 68 mm. Very fine condition. £90 - £120

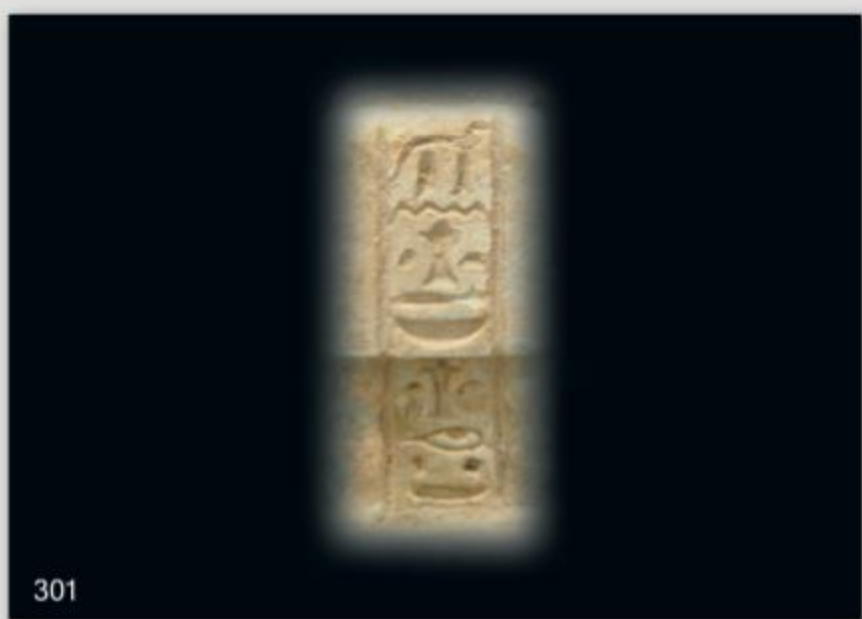
*Ex Cummings 1987, with old collection ticket.*

**301 Egyptian Faience Seated Isis Statuette.** Circa 300 BC, Late Period. The lower part of a large faience statuette of Isis; the goddess seated on a throne with woven seat, hieroglyphic column of text on the back. 195 grams, base 83 mm long. Fine condition. £450 - £600

*From an old English collection.*

**302 Egyptian 22nd-23rd Dynasty Shabti Figurine.** Circa 935-730 BC, Third Intermediate Period, 22nd-23rd Dynasty. A pale green glazed faience shabti, details added in black, with frontal column of hieroglyphic text. 105 grams, 122 mm. Fine condition, chipped. £300 - £400

*From an old English collection.*



301

**303 Egyptian 26th Dynasty Shabti Figurine.** Circa 672-525 BC, Saite Period. A very large pale green glazed faience shabti, carrying implements, the faint remains of lines of hieroglyphic text on the body. 165 grams, 175 mm. Fine condition. £240 - £300

*From an old English collection.*

**304 Egyptian 26th Dynasty Shabti Figurine.** Circa 672- 525 BC, Saite Period. A large well modelled pale green glazed faience shabti, with sharp facial features, carrying implements. 34 grams, 111 mm. Very fine condition. £200 - £250

*From an old English collection.*



302



303



304



305 **Egyptian 26th Dynasty Shabti Figurines.** Circa 672-525 BC, Saite Period. Two large well modelled pale green glazed faience shabtis, each with sharp facial features, carrying implements. 66 grams, 108 - 111 mm. Very fine condition with no repairs. [2]  
£400 - £500

*From an old English collection.*



306 **Egyptian 26th Dynasty Shabti Figurines.** 672-525 BC, Saite Period. Three well modelled pale green glazed faience shabtis, carrying implements. 65 grams, 96 - 101 mm. Fine condition with no repairs. [3]  
£140 - £200

*From an old English collection.*



307 **Egyptian 26th Dynasty Shabti Group.** Circa 672-525 BC, Saite Period. A group of three well modelled pale green glazed faience shabtis, carrying implements. 60 grams total, 84 - 93 mm. Fine condition with no repairs. [3]  
£180 - £240

*From an old English collection.*



308 **Egyptian Seven Glazed Composition Scarabs.** Circa 2050-500 BC, Middle Kingdom - Late Period. A group of seven glazed composition scarabs engraved with geometric designs and hieroglyphs. 5.40 grams, 8 - 16 mm. Fine condition. [7]  
£140 - £180

*Property of a Gentleman.*



309 **Egyptian Five Blue and Brown Composition Amulets.** Circa 664-332 BC, Late Period. A mixed group of five glazed faience amulets; including Bes, Ptaichos, udjat eye, a plumed headress (chipped) and Dshret crown of lower Egypt. 17 grams, 19 - 39 mm. Fine condition. [5]  
£140 - £200

*Property of a Gentleman.*





310 **Egyptian Blue and Grey Composition Amulets.** Circa 664-332 BC, Late Period. A mixed group of five glazed faience amulets; including two examples of Thoth, Shu, a grey heart-shaped amulet and a papyrus column. 16 grams, 25 - 50 mm. Fine condition. [5] £140 - £200

*Property of a Gentleman.*

311 **Egyptian Blue and Brown Composition Amulets.** Circa 664-332 BC, Late Period. A mixed group of five glazed faience amulets; including Ptaichos, Thoth, Shu, a brown heart-shaped amulet and a shabti figurine. 13 grams, 18 - 39 mm. Fine condition. [5] £140 - £200

*Property of a Gentleman.*

312 **Egyptian Green and Blue Composition Amulets.** Circa 664-332 BC, Late Period. A mixed group of seven glazed faience amulets; including Bes, Thoth, Taweret, Papyrus column and Dshret crown of lower Egypt. 23 grams, 26 - 39 mm. Fine condition with no repairs. [7] £140 - £200

*Property of a Gentleman.*

313 **Egyptian Late Period Glass Amulet Group.** Circa 664-332 BC, Late Period. A mixed group of six glass figural amulets. 6.41 grams, 34 - 40 mm. Fine condition. Rare. [6] £220 - £280

*Property of a Gentleman.*

314 **Egyptian Glass Polychrome Bead Necklace.** Circa 1550-1070 BC, New Kingdom. A necklace created from an assemblage of cylindrical cream, turquoise and red glass beads with interstitial groups of white, coral, turquoise, cream, orange and brown disc beads. See Dubin, L.S. *The History of Beads from 30.000 BC to the Present*; Andrews, C. *Amulets of Ancient Egypt*. 8.76 grams, 805 mm. Very fine condition. £60 - £90

*From an old English collection.*

315 **Egyptian Amuletic Bead Necklace.** Circa 525-343 BC, Late Dynastic Period. A necklace created from an assemblage of dark blue glass beads, gold-glass beads and amuletic pendants including a turquoise scarab, a turquoise frog, a blue squatting baboon, a white oyster shell, a black steatite heart and two dark blue discoid beads with knobs. See Dubin, L.S. *The History of Beads from 30.000 BC to the Present*; Andrews, C. *Amulets of Ancient Egypt*. 15 grams, 455 mm overall length. Very fine condition, restrung. £300 - £500

*From an old English collection.*

316 **Egyptian Faience Mummy Bead Necklace.** Mainly circa 664-343 BC, Late Period. A long necklace of Egyptian multicoloured faience disc beads, together with rounded and faceted carnelian and other stone beads at intervals (these possibly not of Egyptian origin); restrung with a modern clasp. 32 grams, 100 cm. Fine condition, well matched and the beads generally of good colour. £40 - £60

*Ex Mandelli collection.*



317

**317 Egyptian Old Kingdom Marble Maceheads.** 3rd millennium BC. Three piriform cream marble maceheads, pierced vertically; this type replaced the disc macehead of the Naqada II period of pre-dynastic Upper Egypt. 755 grams total weight, 56 - 62 mm across. Very fine condition. [3] £160 - £200

*Property of a deceased estate.*

**318 Egyptian Middle Kingdom Funerary Boatman.** Circa 2133-1797 BC. From a model wooden funerary vessel, the kneeling boatman painted red with a white kilt and black wig. See the *Thans Museu Egipci de Barcelona E-50*. For discussion of funerary boats and different types cf. S. D'Auria, P. Lacovara, C. H. Roehrig, *Mummies and Magic*, (Museum of Fine Arts, Boston 1988), p. 114 figs 65-69. 190 grams, 23 cm including stand. Fine condition.

£350 - £500

*Property of a deceased estate.*

**319 Egyptian Middle Kingdom Funerary Boatmen.** Circa 2133-1797 BC. From model wooden funerary vessels, the kneeling boatmen with the remains of red painted bodies, white kilts and black wigs. See the *Thans Museu Egipci de Barcelona E-50*. For discussion of funerary boats and different types cf. S. D'Auria, P. Lacovara, C. H. Roehrig, *Mummies and Magic*, (Museum of Fine Arts, Boston 1988), p. 114 figs 65-69. 150 grams, 134 - 160 mm. Fair condition.

£500 - £700

*Property of a deceased estate.*



318



319



320

320 **Egyptian Painted Wood Vessel.** 2nd Millenium BC. A large wooden vessel with straight sides, wide rim with painted brickwork in green and ochre, and flat bottom; the lower half black, the upper half cimson; with central band painted ochre, a green band either side. 60 grams, 13.8 cm wide. Fine condition, one small section of the rim missing. Extremely rare. £1,200 - £1,600

*Purchased from a London auction house around 2005.*

321 **Egyptian Painted Wood Vessel.** 2nd Millenium BC. With straight sides, wide rim and flat bottom; the lower half black, the upper half cimson; with the rim and three central bands painted ochre. 35 grams, 10 cm wide. Very fine condition. Extremely rare.

£1,400 - £1,800

*Purchased from a London auction house around 2005.*



321

Shown: 1 item of 7



322

**322 Egyptian Coptic Textile Fragments.** 4th-8th century AD. A mixed group of textile pieces with predominantly floral and geometric motifs in blue and red on a neutral background. See Harris, J. *5000 Years of Textiles*, p.63. 2.18 Kg total including mounts; 16- 41 cm overall length. Fine condition. [7] £650 - £850

*From an old English collection.*

**323 Egyptian Coptic Textile Fragments and a Leather Shoe.** Circa 4th-8th century AD. A mixed group of textile pieces in red and blue on a neutral background, displaying geometric and floral motifs; offered with a leather shoe and sundry leather fragments, with texts in Coptic cursive scripts. See Harris, J. *5000 Years of Textiles*, p.63. 595 grams including mounts, 11 - 211 cm. Fine condition, the shoe friable. [7] £650 - £850

*From an old English collection.*

Shown: 2 items of 7



323



324

**324 Greek Gold Funerary Diadem.** Circa 3rd century BC. A funerary diadem formed as a fine gold sheet, expanding slightly towards the central ellipse, with repoussé palmettes and scrolls; the ends provided with loops to facilitate tying around the forehead. Gold, 7.36 grams, 370 mm. Very fine condition, complete.

1,200 - £1,500

*Ex Gorny & Mosch, Munich, October 2006.*

**325 Greek Gold & Carnelian Necklace.** 1st century BC. A necklace comprising spherical carnelian beads of increasing size and eight components consisting of a ribbed gold tube with a pair of hollow gold discs dependent; each disc with a beaded double border and central motif of five radiating arms with interstitial pellets on its outer face, and a circular hole beneath. Gold, 41.06 grams, 420 mm. Very fine condition, re-strung and with a modern clasp.

£1,250 - £1,750

*Bought on the London art market around 1935.*



325



326

**Greek Hellenistic Double Bezel Gold, Garnet and Sapphire Thumb Ring.** 2nd-1st century BC. A large and most impressive ring; the main bezel of hexagonal, stepped form with a large elliptical cabochon garnet set into the upper face; the elongated D-shaped balustraded hoop with two pinned hinge points to facilitate wearing; the lower bezel set with a round cabochon sapphire; supplied with custom-made stand. See *Metropolitan Museum of Art, New York, Accession No 2005. 278* for a very similar (if of plainer style) ring and see also Higgins, R.A. *Greek and Roman Jewellery*, plate 53(E) for a closely similar ring lacking the hinges. Gold, garnet and sapphire, 49.42 grams, 41 mm overall, 19.70 mm x 17.51 mm internal diameter. Extremely fine condition and fully wearable. Very rare and desirable. £22,000 - £28,000

*Property of a Gentleman. These spectacular double-bezel rings were most probably intended to be worn on the thumb to display the sheer ostentation of the wealthy Hellenistic lifestyle*

**327 Greek Gold Repoussé Arm Band.** 4th-3rd century BC. An expanding sheet-gold band with rolled terminals, decorated with a symmetrical arrangement of repoussé designs featuring birds, vegetation and human masks, all with pelleted surrounds. See Higgins, R.A. *Greek and Roman Jewellery*, plate 35 for more ornate examples of the type. Gold, 8.01 grams, 76 mm external diameter. Extremely fine condition, complete, some superficial nicking to the outer edges. £500 - £700

*Ex Coombe collection.*



327



328



329



330



331



332

**328 Greek Double Rams' Head Gold Ring.** 6th-3rd century BC. A hollow penannular finger ring with coiled wire collars; the silver terminals in the form of opposed rams' heads. See Higgins, R.A. *Greek and Roman Jewellery*, plate 30. Gold and silver, 11.63 grams, 28 mm overall. (Approximate size UK W, USA 11, Europe 25.0, Japan 24.) Very fine condition, one terminal tarnished but original.

£1,250 - £1,750

*Ex Peel collection.*

**329 Greek Double Cameo Gold Spiral Ring.** Circa 2nd century BC. A finger ring formed from a spiral of sheet gold with tongue-shaped finials; the hoop decorated on the upper faces with serpentine filigree and provided with a filigree border; the paired bezels set with enamelled male and female busts. See Oman, C.C. *Victoria and Albert Museum Catalogue of Rings 1930*, plate IV. Gold and enamel, 5.74 grams, 22 mm external diameter. (Approximate size UK U, USA 10, Europe 22.33, Japan 22). Very fine condition. Rare.

£500 - £800

*Originally from Bactria; bought from a central London dealer. Cameo rings and spiral rings both occur as Roman period fashions, but the combination of cameos with a spiral is unusual.*

**330 Graeco-Roman Fortuna Gold Ring.** 2nd century BC-2nd century AD. An intaglio ring comprising a plain gold hoop surmounted by an elliptical cloison setting, flanked by spheres at the shoulders; the setting comprising an elliptical base-plate with ropework facing; the cell enclosing a carnelian intaglio depicting the goddess Fortuna with a pair of scales and the wheel of fortune. See Oman, C.C. *Victoria and Albert Museum Catalogue of Rings 1930*, plate IV item 71. Gold and carnelian, 7.73 grams, 29 mm external, 20 mm internal (Approximate size UK U ½, USA 10½, Europe 23.59, Japan 22). Extremely fine condition.

£600 - £900

*Ex Powell collection, ex Hurst collection.*

**331 Greek Nike Gold Earrings.** 4th-1st century BC. A pair of Hellenistic sheet-gold bifacial earrings depicting the goddess Nike (Victory) advancing with a wreath of laurel leaves in her right hand; on the reverse, the figure shown from behind in less detail; the suspension loop attached to a hook bearing a floral motif. See Higgins, R.A. *Greek & Roman Jewellery*, p.165. Gold, 8.58 grams total, 50 and 52 mm. Extremely fine condition. [2]

£600 - £800

*Ex Gorny & Mosch, Munich, October 2006 lot 649.*

**332 Greek Pair of Gold Hoop Earrings.** 5th-1st century BC. A pair of earrings, each formed as a hollow hoop with hooked closures at both ends. Gold, 5.70 grams total, 46 mm external diameter. Very fine condition.

£260 - £340

*Property of a Lady.*



334



335

333 ► **Greek Two Pairs and a Single Gold Earring.** 3rd-4th century BC. A mixed group of hollow, crescentic earrings comprising one pair closed by winding the wire terminals round each other; one pair open with concave profile; a single earring with a suspension loop at its base and garnet set en cabochon at the forward edge. See Higgins, R.A. *Greek and Roman Jewellery*. Gold, 5.66 grams total, 14-17 mm. Some wear and loss, generally very fine condition.

£150 - £200

*Ex Winter collection.*

334 **Greek Hellenistic Gold Finial.** 1st century BC-1st century AD. A ferrule or finial in the form of a pierced tube and attached hollow bulb; the tube with a wire rim. Gold, 8.40 grams, 25 mm. Very fine condition, some wear to the bulb.

£750 - £900

*Property of a gentleman. Probably the finial from a high-status staff or pointer.*

335 **Greek Silver-Gilt Marriage Figures Intaglio Ring.** 3rd-1st century BC. A silver finger ring formed as a ribbed hoop expanding to a flat, elliptical bezel; the ribs terminating in incuse pellets; the bezel bearing the incised image of two figures, one with an arm bent and extending an arm to the other; traces of gilding remain on the garments. See Higgins, R.A. *Greek and Roman Jewellery*. Silver, 10.45 grams, 24 mm width overall. (Approximate size UK L½, USA 6, Europe 11.87, Japan 6). Very fine condition.

£1,000 - £1,400

*Bought from a dealer in Munich, Germany in the 1990's.*

336 **Greek Silver Female Head Mount.** 4th-2nd century BC. A convex mount in the form of a female head with rounded features, full lips and elaborately coiffured hair falling around the neck; below, a waisted pedestal; an attachment peg on the reverse. Silver, 19.90 grams, 50 mm. Very fine condition, complete.

£800 - £1,200

*Ex Poulton collection.*

337 **Greek Silver Zoomorphic Spoon.** Circa 5th century BC. A cast silver spoon with shallow ovoid bowl; the handle hexagonal in section with flanking points at the lower end; the finial a stylized goat's head with horns and ears emerging from the shaft. See *The Kiev Museum of Historic Treasures*, plate 60-1 for a gold gorytus mount from the Crimean region with similar treatment of the animal-head motif. Silver, 39.32 grams, 159 mm. Very fine condition, complete.

£600 - £800

*From an old English collection.*



336



337





338

**338 Greek Pair of Bronze Spartan Greaves.** 7th-5th century BC. A finely made, anatomically sculpted pair of greaves covering the knee, shin and calf; slightly everted rim at the ankle and thickened edge at the calf; beaten from sheet bronze. See Sekundas, N. *The Spartan Army*, cf. Christies catalogue: *The Axel Guttman Collection. Ancient Arms and Armour Collection*, part 2 item 93. 1.3 Kg, 385 mm. Extremely fine condition, complete. £2,000 - £3,000

*Ex Axel Guttman collection. Similar in design to the greaves marked with the name 'Denda' in the Staatliche Antikensammlungen, Munich. These came from a Greek workshop in southern Italy, and were found with a Corinthian helmet dated to circa 500 BC. Greaves were part of the standard equipment of the hoplite infantry formations. There was no need for attachment straps with this style of armour, which relied on the springiness of the bronze to close around the leg.*

**339 Thracian Silver Lotus Phiale.** Circa 5th-4th century BC. A repoussé moulded lotus bowl or phiale of exquisite workmanship similar to those found in the Rogozen Treasure, its central omphalos domed internally and the rim flared and rolled with inverted base. Cf. *The Rogozen Reasure Publishing House of the Bulgarian Academy of Sciences*, page 160, no. 79. Silver, 80 grams, 98 mm diameter. Extremely fine. £900 - £1,200

*Ex London auction house in the 1980's.*

**340 Thracian Silver Lotus Phiale.** Circa 5th-4th century BC. A repoussé moulded lotus bowl or phiale of exquisite workmanship similar to those found in the Rogozen Treasure, its central omphalos domed internally and the wide rim flared and rolled, with inverted base. Cf. *The Rogozen Reasure Publishing House of the Bulgarian Academy of Sciences*, page 160, no. 53. Silver, 125 grams, 160 mm diameter. Extremely fine condition. £3,000 - £4,000

*From an old English collection.*



339



340



341

**341 Bronze Age Graeco-Parthian Spearheads.** Circa 5th-3rd century BC. A pair of cast bronze lanceolate spearheads with prominent central lozenge-section spines; one with a long round-section neck and stout spiked tang; the other similar but with longer blade and shorter neck. 595 grams, 395 mm; 580 grams, 399 mm. Very fine condition, complete. £450 - £600

*From an old English collection.*

**342 Bronze Age Graeco-Parthian Bronze Spearhead.** Circa 5th-3rd century BC. A slender, lanceolate cast spearhead with prominent central rib developing from the neck and narrowing towards the tip; with spike-tang for attachment to the shaft. 440 grams, 382 mm. Extremely fine condition, complete. £220 - £300

*From an old English collection.*

**343 Thracian Bronze Figural Pendant.** Circa 2nd-3rd century AD. A convex bronze pendant comprising a male mask on a semicircular panel with radiating triangle surround and a further border of pellets and u-shaped motifs; the head modelled with thick hair and beard and large eyes, probably intended to represent Herakles; two circular piercings on the outer edges for suspension. 125 grams, 107 mm. Very fine condition, complete. £250 - £400

*From an old English collection.*

**344 Greek Bronze Silenus Trade Weight.** 5th-2nd century BC. A discoid cast trade weight in the form of the mask of Silenus, the companion to Dionysus the god of wine and ecstasy. 35 grams, 33 mm. Very fine condition, complete, light wear. £160 - £240

*Ex Poulton collection.*

**345 Greek Bronze Goose Weight.** 5th-3rd century BC. A lead-filled cast bronze weight in the form of a goose with extended neck and raised head; a suspension loop on its back; decorated with incised diagonal lines and rows of punched roundels. 115 grams, 82 mm. Very fine condition. £160 - £240

*From an old English collection.*



342



343



344



346



346

346 **Greek South Italian Red-Figure Calyx-Krater.** Circa 4th century BC. A well-painted red figure ware krater with restrained use of white slip detailing; with ovolo motif encircling rim; wave pattern on the baseline; with long handles. Side A: a libation scene with a female figure left, wearing local dress and holding a vessel in her right hand, holding a sickle in her left; facing an Oscan warrior wearing a plumed helmet, holding shield in left hand and carrying a pair of greaves in his right. Side B: a partially nude female standing in front of an altar table, pouring wine from a jug into a krater on a pedistel, holding an open casket in her left hand. 550 grams, 22 cm high. Extremely fine condition. £600 - £900

*Ex Aston collection.*

347 **Bactrian Greek Bronze Trader's Seal Matrix.** 1st millennium BC. A seal matrix with cast bronze loop handle; the underside formed in cast cells to create the merchant's design - a hare and hound flanking the central elliptical cell. 105 grams, 74 mm diameter. Very fine condition. £700 - £900

*From an old English collection.*

348 **Bactrian Greek Bactrian Bronze Trader's Seal Matrices.** 1st millennium BC. A pair of openwork bronze circular seal matrices with loop handles on the upper surface; one depicting a scorpion with curled tail within a plain circle, the other a double scrolled design within a florid circle. 24 grams, 54 mm (scorpion), 23 grams, 51 mm (scrolls). Very fine condition, complete. [2] £400 - £600

*From an old English collection.*



347



348



349



350

349 **Greek Southern Italian Red Figure Lekanis.** Circa 4th century BC. The lid showing the profile heads of two ladies of fashion, both wearing elaborate headgear with curls falling over their ears; palmettes between the heads; the top of the handle with palmette design; a band of wave pattern on the lid rim, vertical strokes around the base. 235 grams, 158 mm wide. Very fine condition. £300 - £400

*Ex Akenhurst collection.*

350 **Greek Southern Italian Red Figure Lekanis.** Circa 4th century BC. The lid showing the profile heads of two ladies of fashion, both wearing elaborate headgear with curls falling over their ears; palmettes between the heads; the top of the handle a rosette; a band of wave pattern on the lid rim. 155 grams, 127 mm wide. Fine condition, lid repaired. £300 - £400

*Ex Akenhurst collection.*

351 **Greek Southern Italian Painted Black Glazed Kylix.** Gnathian, circa 4th century BC. A black glazed kylix with square looped handles, low foot and shallow bowl; the tondo painted in crimson with a band of laurel surrounded by two concentric circles. 370 grams, 28 cm wide. Very fine condition, restored. £220 - £280

*Property of a gentleman.*



351



352



353



354



355

**352 Greek Southern Italian Black Glazed Kantharos.** Circa 4th century BC. A kantharos embellished in crimson slip, with a medial bands of meander, scroll and hatch motif on either side. 270 grams, 14 cm high. Fine condition. £240 - £320

*Ex Suvanna collection. Acquired 1970's.*

**353 Greek Southern Italian Black Glazed Oinochoe.** Apulian, circa 4th century AD. A oinochoe with trefoil mouth, enlivened with crimson slip; decorated with a lady of fashion, wearing elaborate headgear with curls falling over her ears; palmettes either side. 95 grams, 106 mm high. Very fine condition. £280 - £360

*Ex Akenhurst collection.*

**354 Greek Apulian Red Figure Ware Painted Skyphos.** Magna Graecia, circa 4th century BC. A well-painted red figure ware skyphos with restrained use of white slip detailing; wave pattern motif encircling rim; palmette complex beneath either handle. Side A: a draped female holding a mirror in right hand, phiale in her left. Side B: the head of a lady of fashion, wearing elaborate headgear with curls falling over her ears, wearing necklace and earrings. 165 grams, 105 mm high. Fine condition, restored. £450 - £600

*Ex Suvanna collection. Acquired 1970's.*

**355 Greek Geometric Painted Apulian Prochous.** Circa late 4th century BC. Enlivened with crimson, ochre and white slip; the bulbous body decorated with a crimson band with horizontal white and ochre vine either side, further bands of decoration either side; the neck decorated with crimson and ochre bars, ovolo and vertical lines separated by thin double crimson bands. 210 grams, 195 mm high. Extremely fine condition. £400 - £600

*Ex Suvanna collection. Acquired 1970's.*



356

**356 Greek Figural Painted Apulian Epichyses.** Circa 350 BC. An Apulian Gnathian ware Epichyses enlivened with crimson, ochre and white slip; with rays on the neck, the shoulder showing a naked winged Eros lying, adorned with a necklace, bracelets and anklets, holding a phiale and wreath in his right hand, a band of ovolo on the rim, and foliate sprigs in the field; palmette at the base of the handle, and grape vine on the cotton reel body. 285 grams, 195 mm high. Extremely fine undamaged condition. £1,200 - £1,800

*Ex Suvanna collection. Acquired 1970's.*



357

**357 Greek Campanian Figural Black Glazed Guttos.** Circa 4th-3rd century BC. Of typical form with ring-handle and rimmed spout; the discus moulded in relief in the form of a winged Iris with long flowing hair, holding mirror and comb. 320 grams, 13 cm high. Very fine condition. £250 - £350

*Ex Akenhurst collection. Iris was the goddess of the rainbow, the messenger of the Olympian gods.*

**358 Greek Canosan Painted Native Italic Krater.** 3rd-4th century BC. A small krater with traces of painted decoration in the form of internal and external black and ochre bands. 190 grams, 117 mm high. Very fine condition, one handle repaired. £120 - £180

*Ex Akenhurst collection.*



358



359

**359 Greek Gnathian Ware Painted Skyphos.** Circa late 4th century BC. Enlivened with crimson, ochre and white slip; decorated with a crimson band with horizontal white and ochre vine either side, with the image of a high status mirror below with a rosette of annulets at each end, a further crimson band either side with white and ochre vine; the rim decorated with ovolo, scrolls and ochre dots separated by thin double crimson bands. 150 grams, 105 mm high. Extremely fine condition. £600 - £800

*Ex Suvanna collection. Acquired 1970's.*



360

**360 Greek Xenon Ware Black Glazed Kantharos, Thistle Mug and Oinochoai.** Southern Italian, circa 4th century BC. A mixed group of three miniatures embellished in ochre slip: a kantharos decorated with a medial band of meander, a thistle mug with two rows of leaves between three horizontal lines, with a band of strokes above and an Oinochoai with a large palmette. 135 grams, 54 - 61 mm high. Very fine condition without repair. [3] £240 - £300

*Ex Suvanna collection. Acquired 1970's.*

**361 Greek Mycenaean Painted Stirrup Jar.** Late Helladic IIIA, circa 1400-1300 BC. With bands of tan decoration encircling the bulbous body and flat foot, multiple chevron designs between the handles and spout. See L. Marangou, *Ancient Greek Art: the N.P. Goulandris Collection*, (Athens, 1985), p. 40. 360 grams, 133 mm high. Extremely fine condition, with a small amount of calcite deposits. £800 - £1,200

*Ex Aston collection.*

**362 Greek Mycenaean Painted Stirrup Jar.** Late Helladic IIIA, circa 1400-1300 BC. With bands of tan decoration encircling the bulbous body and narrow foot, fan-shapes between the handles and spout. See L. Marangou, *Ancient Greek Art: the N.P. Goulandris Collection*, (Athens, 1985), p. 40. 305 grams, 150 mm high. Extremely fine condition. £800 - £1,200

*Ex Aston collection.*



361



362



363

363 **Greek Mycenaean Painted Stirrup Jar.** Late Helladic IIIA, circa 1400-1300 BC. With concentric bands of tan decoration on either side of the bulbous body, palmettes below the handles. See L. Marangou, *Ancient Greek Art: the N. P. Goulandris Collection*, (Athens, 1985), p. 40. 225 grams, 128 mm high. Extremely fine condition. £800 - £1,200

*Ex Aston collection.*



364

364 **Greek Mycenaean Pottery Juglet.** Circa 1350-1300 BC. With bands of tan decoration encircling the bulbous body, flared rim with similar decoration on the interior. 360 grams, 13.5 cm high. Very fine condition. £140 - £200

*From an old English collection.*

365 **Greek Glass Corinthian Helmet Intaglio.** Circa 5th century AD. An elliptical moulded blue intaglio pendant depicting the bust of a warrior in profile, wearing a crested Corinthian helmet and cuirass; in ceramic frame. 21 grams, 53 mm. Fine condition, re-assembled. Rare. £2,000 - £2,500

*Property of a Gentleman.*

366 **Greek Marble Fragment of a Horse and Rider.** Circa 4th century BC. Probably from a votive group with a combat scene between Greeks and Amazons, depicting an Amazon wearing a short chiton mounted on her rearing horse, mounted. For a similar fragment of a mounted Amazon sculpture cf. M.B. Comstock and C.C. Vermeule *Sculpture in Stone, The Greek, Roman and Etruscan Collections of the Museum of Fine Art Boston*, Boston, 1976, p. 32, no. 42. 2.2 Kg, 16 cm wide x 17 cm high including stand. Fine condition. £650 - £800

*Ex an old English collection.*



365



366





367



368

367 **Roman Pearlescent Bead Gold Necklace.** 1st-2nd century AD. A delicate necklace formed with fine (about 0.3mm) wire double-loop links and pearlescent globular beads; the catch a hook-and-eye with gold disc detailing; each disc with a triple-band filigree border and central motif formed from three c-shaped filigree arcs. See Higgins, R.A. *Greek and Roman Jewellery*. Gold, 6.34 grams, 550 mm overall length. Very fine condition, complete. £400 - £600

*Ex Tregar collection.*

368 **Roman Jewelled Gold Bracelet.** 3rd-5th century AD. A broad bracelet comprising a twisted three-strand band with ribbed collar finials; the hinged closure formed as a circular plate with lozengiform repoussé panel; centrally, an elliptical garnet mounted en cabochon; the hinge covered with a lozengiform plate with granulated decoration. Gold, 26.26 grams, 67 mm external diameter. Very fine condition. £2,000 - £3,000

*From an old European collection.*



369 **Roman Gold and Garnet Bow Brooch.** 1st century AD. An 'Aucissa Type' bow brooch formed with a transverse bar on which the pin hinges at the rear; below the bar, a narrowing stepped section from which develops an openwork bow pierced by three pairs of garnet discs with gold collars, rotating on gold axles; the foot narrowing to a flat plate and collared knob finial with the catchplate behind. Hattatt, R. *Ancient and Romano-British Brooches*, no. 64. Gold and garnet, 18.93 grams, 54 mm. Extremely fine condition. Rare. £3,500 - £5,000

*Ex Coombe collection.*

370 **Roman Cameo Gold Ring.** 2nd century BC - 2nd century AD. A finger ring comprising an expanding gold hoop with slight carination rising to the elliptical bezel bearing a gold cell with a blue-glass cameo of an eagle looking behind. Oman, C.C. *Victoria and Albert Museum Catalogue of Rings*, 1930, plate V. Gold, 6.17 grams, 24 mm external. (Approximate size UK O½, USA 7½, Europe 15.61, Japan 15). Very fine condition, complete. £750 - £1,250

*From an old English collection.*

371 **Roman Standing Warrior Intaglio Gold Ring.** 2nd century BC - 2nd century AD. A finger ring comprising a three-band hoop the outer bands extending to spirals on the shoulders; the bezel a green stone intaglio depicting a standing robed warrior with shield, spear and broad-brimmed helmet. See Oman, C.C. *Victoria and Albert Museum Catalogue of Rings*, 1930 plate IV. Gold and gemstone, 3.16 grams, 20mm overall. (Approximate size UK G, USA 3½, Europe 5.40, Japan 5). Very fine condition. £750 - £950

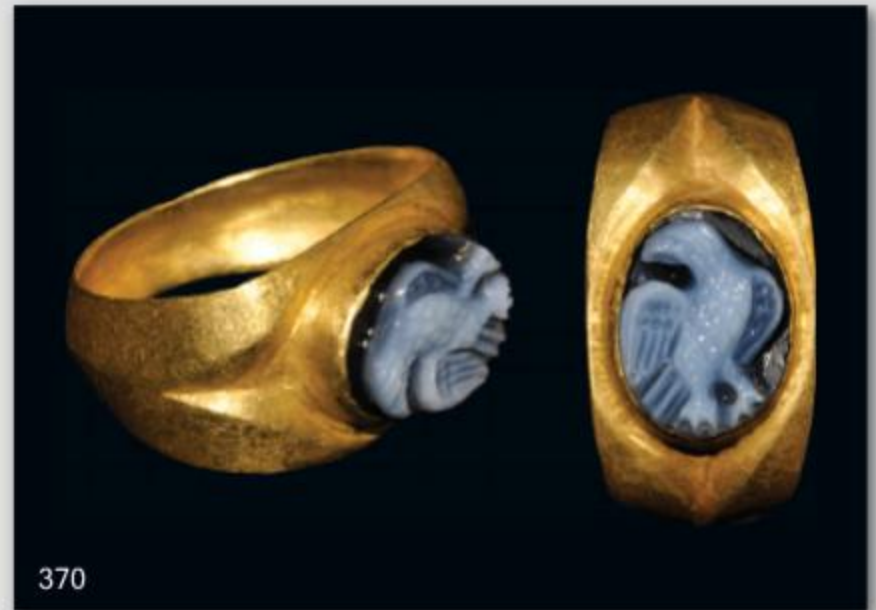
*Bought in Cologne, Germany 1972.*

372 **Roman Erotic Intaglio Gold Ring.** 1st-2nd century AD. A substantial finger ring comprising a hollow expanding elliptical hoop rising to a rectangular bezel with a blue glass intaglio depicting a naked man and woman embracing. See Higgins, R.A. *Greek and Roman Jewellery*. Gold, 6.89 grams, 30 mm overall. (Approximate size UK U, USA 10, Europe 22.52, Japan 22). Very fine condition, complete. £600 - £800

*Ex Aston collection.*

373 **Roman Blue Glass Intaglio Gold Ring.** 1st - 2nd century AD. A finger ring with D-section hoop rising to a lozengiform bezel with an elliptical cell containing an elliptical blue-glass intaglio with a male bust. See Higgins, R.A. *Greek and Roman Jewellery*, plate 62. Gold, 6.93 grams, 24 mm external. (Approximate size UK F½, USA 3¼, Europe 4.3, Japan 4). Very fine condition, some loss to the lower edge of the intaglio. £600 - £800

*Bought from a central London dealer in the 1980's.*



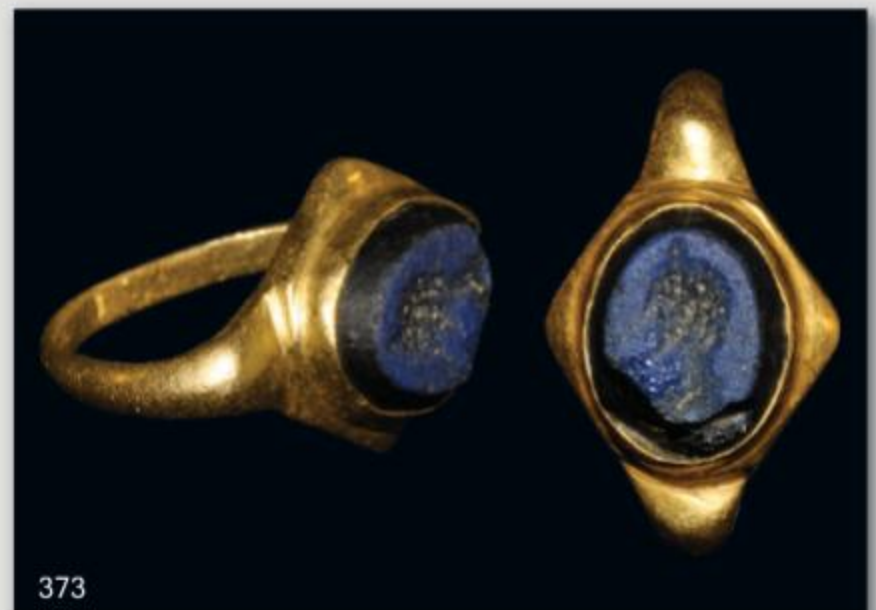
370



371



372



373



374



375



376



377



378

**374 Roman Seated Figure Intaglio Gold Ring.** 1st-3rd century AD. A finger ring comprising a plain hoop expanding to a flat, elliptical bezel in which is set a red gemstone intaglio depicting a seated figure. Higgins, R.A. *Greek and Roman Jewellery*, plate 63. Gold and gemstone, 6.71 grams, 25 mm overall. (Approximate size UK S¼, USA 9¼, Europe 20.98, Japan 20). Extremely fine condition, wearable. £800 - £1,200

*Bought from a central London dealer in the 1990's.*

**375 Roman Inscribed Gold Ring.** 1st - 3rd century AD. A cast gold finger ring with plain hoop; the bezel formed as a discoid pad; the text EUK/RA/TION in Greek capitals on the shoulders and bezel. Higgins, R.A. *Greek and Roman Jewellery*, plate 63. Gold, 6.04 grams, 21 mm external. (Approximate sizes UK I; USA 5¼; Europe 11.24; Japan 11). Extremely fine condition. £600 - £900

*Ex Stark collection. The Greek word eukration describes a hot drink made from pepper, cumin and anise.*

**376 Roman Horse and Rider Intaglio Gold Ring.** Circa 2nd century AD. An openwork gold finger ring comprising a hoop formed from looped filigree wire within ropework borders; the bezel an elliptical cell containing a red gemstone intaglio set en cabochon; the intaglio depicting a rider on a cantering horse. See Higgins, R.A. *Greek and Roman Jewellery*, plate 63. Gold and gemstone, 4.421 grams, 26 mm overall. (Approximate size UK T½, USA 9¼, Europe 21.89, Japan 21). Extremely fine condition, wearable. £800 - £1,200

*Purchased on the London art market in 2002.*

**377 Roman Scorpion Intaglio Gold Ring.** 2nd century AD. A plain gold hoop expanding to an elliptical bezel, set with a conical intaglio in black, white and amber stone depicting a scorpion. See Higgins, R.A. *Greek and Roman Jewellery*, plate 53. Gold and stone, 8.19grams, 28 mm external. (Approximate size UK R½, USA 8¾, Europe 19.38, Japan 18). Very fine condition, some distortion to the interior of the hoop beneath the bezel. £1,200 - £1,600

*Bought from a central London dealer in the 1980's.*

**378 Roman Intaglio Gold Ring.** 2nd-3rd century AD. A gold finger ring formed with a round-section hoop expanding to an elliptical bezel bearing an intaglio of a female bust in amber and white in a cabochon setting. See Higgins, R.A. *Greek and Roman Jewellery*. Gold, 3.07 grams, 18 mm overall. (Approximate size UK B, USA 1, Europe -, Japan 0). Very fine condition, complete. £400 - £600

*Property of a Lady.*



379

**379 Roman Standing Figure Intaglio Gold Ring.** 3rd-4th century AD. A finger ring comprising a hoop with filigree detailing on the exterior and granule triangles on the shoulders; the bezel a cloison with red gemstone intaglio depicting a standing female figure. See Higgins, R.A. *Greek and Roman Jewellery*. Gold, 5.09 grams, 25 mm overall. (Approximate size UK W, USA 11¼, Europe 25.60, Japan 24). Extremely fine condition, complete and wearable.

£700 - £900

*Bought in Cologne, Germany.*



380

**380 Roman Minerva Intaglio Gold Ring.** Circa 4th century AD. A gold finger ring comprising a circular-section hoop and elliptical bezel; the shoulders decorated with granulation; the bezel set en cabochon with a red gemstone intaglio depicting Minerva in a Corinthian helmet, with a spear and shield. See Higgins, R.A. *Greek and Roman Jewellery*, plate 63. Gold and gemstone, 9.04 grams, 26 mm overall. (Approximate size UK V, USA 10½, Europe 23.99, Japan 23). Very fine condition, wearable.

£1,600 - £2,000

*Property of a Gentleman.*



381

**381 Roman Standing Figure Intaglio Gold Ring.** 4th-5th century AD. A finger ring comprising a circular hoop with filigree detailing; the bezel an expanding cell with granulation on the shoulders; the intaglio a red gemstone with standing robed figure design. See Higgins, R.A. *Greek and Roman Jewellery*. Gold, 2.17 grams, 17 mm external. (Approximate size UK I½, USA 4½, Europe 8.07, Japan 8). Extremely fine condition, complete.

£250 - £350

*Ex McCloud collection.*



382

**382 Roman Quadrigea Chariot Gold Ring.** 3rd-1st century BC. A finger ring comprising a plain hollow gold hoop expanding to a flat, elliptical bezel with a ropework border; the bezel bearing the image of a quadrigea chariot and driver. See Higgins, R.A. *Greek and Roman Jewellery*, plate 53. Gold, 4.27 grams, 24.83 mm external. (Approximate size UK U½, USA 10½, Europe 23.59, Japan 22). Extremely fine condition, slight wear to lower hoop.

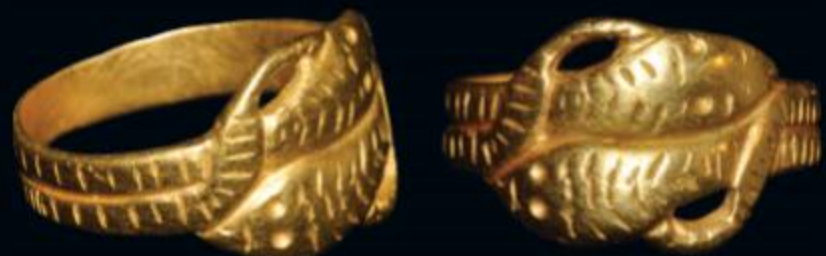
£800 - £1,200

*Property of a Gentleman.*

**383 Roman Double Snake Gold Ring.** 2nd century BC-2nd century AD. A finger ring comprising a hoop divided longitudinally with hatching to each side expanding to a bezel formed as a pair of serpents' heads overlapping opposing tails. See Oman, C.C. *Victoria and Albert Museum Catalogue of Rings 1930*, plate IV. Gold, 5.34 grams, 20 mm external. (Approximate size UK O½, USA 7½, Europe 16, Japan 15). Extremely fine condition. Rare.

£1,200 - £1,500

*Bought from a USA dealer; ex European auction.*



383



**384 Romano-Egyptian Leonine Gold Ring.** 1st century BC. A gold finger ring with expanding hoop rising to the flattened bezel bearing a triangle of granulation, and a lion within a filigree hoop, its tail formed as a delicate coil. Gold, 15.75 grams, 28 mm overall. (Approximate sizes UK P½, USA 7¼, Europe 16.86, Japan 16). Extremely fine condition. £600 - £900

*Ex Stark collection.*

**385 Roman Phallic Gold Ring.** 1st-2nd century AD. A finger ring with an expanding hoop; the bezel with a length of gold wire and two granules depicting a phallus. See Johns, C. *Sex Or Symbol? Erotic Images of Greece and Rome*, pl.10. Gold, 0.95 grams, 15 mm overall. (Approximate size UK C, USA 1¼, Europe 0.15, Japan 0). Very fine condition, complete. £250 - £400

*From an old English collection.*



**386 Pair of Roman Tutullus Gold Earrings.** 1st-4th century AD. A pair of earrings comprising a gold wire recurved rod; an ornamental disc attached, with a conical centre surmounted by a filigree hoop; the disc with concentric filigree collars and single granules on the outer edge; a hoop protruding from beneath. See Higgins, R.A. *Greek and Roman Jewellery*, plate 54. Gold, 5.31 grams total, 26 mm overall. Good very fine condition, some flattening to the filigree collars. £260 - £320

*From an old English collection.*

**387 Pair of Roman Gold Drop Earrings.** 1st-4th century AD. A pair of earrings comprising a gold wire hoop and a decorative disc, with concentric filigree hoops on the outer edge, and a granule and hoop at the centre; the pendant formed as a long cone with a biconical blue gemstone at the lower end, above a plate, the edges decorated with filigree detailing. See Higgins, R.A. *Greek and Roman Jewellery*, plate 54. Gold, 4.28 grams total, 41 mm overall. Extremely fine condition. £320 - £380

*From an old English collection.*



**388 Pair of Roman Gold Drop Earrings.** 1st-4th century AD. A pair of earrings comprising a gold wire hoop and a hemispherical cell, the front plate of which is decorated with granulation and filigree, and open to retain an annular blue bead; from a loop hangs a pelleted rod with a biconical blue gemstone at the lower end, above a fine spiral terminal. See Higgins, R.A. *Greek and Roman Jewellery*, plate 54. Gold, 3.95 grams total, 34 mm overall. Extremely fine condition. £220 - £280

*Property of a Lady.*





389

**389 Pair of Roman Gold Drop Earrings.** 1st-4th century AD. A pair of earrings comprising a gold wire hoop and a decorative disc, with a filigree hoop on the outer edge, and a granule and hoop at the centre; the pendant formed as a long rod with a biconical blue gemstone at the lower end, above a plate, the edges decorated with filigree detailing. See Higgins, R.A. *Greek and Roman Jewellery*, plate 54. Gold, 4.10 grams total, 35mm overall. Extremely fine condition. £260 - £300

*From an old English collection.*

**390 Pair of Thracian Gold Earrings.** 1st-4th century AD. A pair of gold earrings comprising a u-shaped suspension wire and hoop; the plate lunate with filigree double border, bearing a filigree hoop between granules. See Higgins, R.A. *Greek and Roman Jewellery*. Gold, 3.86 grams total, 32 mm overall. Extremely fine condition. £260 - £320

*From an old English collection.*

**391 Pair of Roman Gold Festoon Earrings.** 1st-4th century AD. A large pair of earrings comprising an expanding wire hoop with convex disc; on the disc a volute scroll and granulation arranged in imitation of facial features; beneath the hoop a transverse wire collar; below the collar a pyramid of hollow spheres with filigree festoons attached, faced with a spiral wire plate with granule centre. See Higgins, R.A. *Greek and Roman Jewellery*. Gold, 10.25 grams, 51 mm overall. Extremely fine condition. £220 - £300

*Property of a Lady.*

**392 Pair of Roman Gold Hoop Earrings.** 1st-4th century AD. A pair of gold earrings comprising a wire hoop; on each, a hollow biconical discoid mount with wire frame. See Higgins, R.A. *Greek and Roman Jewellery*. Gold, 2.66 grams, 21 mm overall. Extremely fine condition. £220 - £280

*Bought from a dealer in Düsseldorf, Germany.*

**393 Pair of Roman Gold Cloison Earrings.** 4th century AD. A pair of earrings, each comprising a gold hoop of square-section wire, twisted; attached to this a piriform plate with filigree collar and granule; on the face, a gold cell with a piriform garnet set en cloison; depending from the hoop a pelleted rod with pyramidal cluster of granules. Higgins, R.A. *Greek and Roman Jewellery*. Gold and garnet, 3.89 grams, 35 mm. Extremely fine condition, complete. £320 - £380

*Ex Carter collection.*



390



391



392



393



394



395



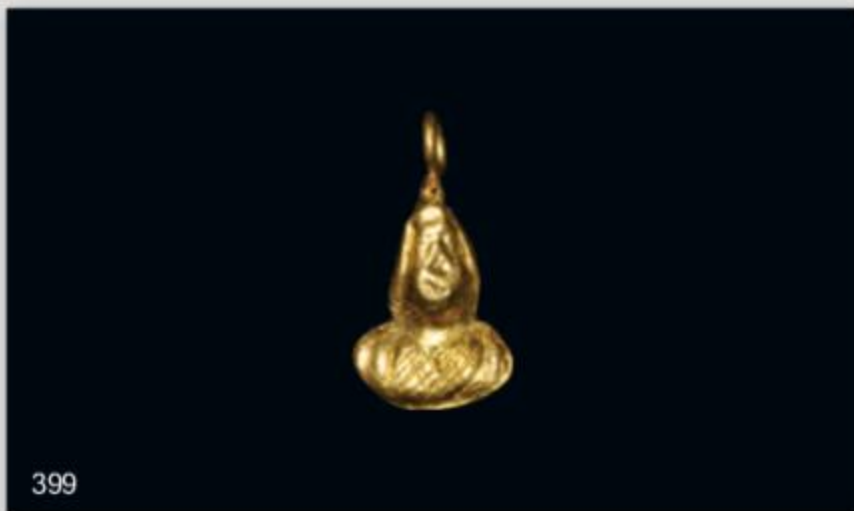
396



397



398



399

394 **Roman Cameo Gold Earring.** 1st-2nd century AD. A delicate earring comprising a hook with circular facing plate formed as radiating triangles and a central cell containing a blue cameo; below the plate a transverse bar from which depend three pelleted rods with garnets set en cabochon and blue glass bead at the bottom. See Higgins, R.A. *Greek and Roman Jewellery*. Gold, 2.62 grams, 34 mm overall. Very fine condition. Extremely rare. £800 - £1,200

*Property of a Lady.*

395 **Roman Granulate Gold Pendant.** Circa 1st century BC. A complex drop pendant with a suspension loop attached to an everted collar with scrolls; below this an elliptical column of hollow spheres with granules between; below this a collar above a pelleted rod. See Higgins, R.A. *Greek and Roman Jewellery*. Gold, 4.62 grams, 41 mm. Extremely fine condition, complete. £250 - £350

*Ex Tregar collection.*

396 **Roman Teardrop Gold Pendant.** 2nd century AD. A inverted teardrop shaped pendant, the body outlined in ribbed, woven and plain wire with wire scrolls, ring and pellets at centre and three graduated pellets at the tip; the ribbed suspension loop with a triangle of granules. See Higgins, R.A. *Greek and Roman Jewellery*. 3.52 grams, 36 mm. Extremely fine condition. £450 - £600

397 **Roman Lunate Gold Pendant.** 1st-2nd century AD. A pendant comprising a ribbed suspension loop with granulation on the junction; the plate crescentic with filigree and ropework border enclosing a central repoussé boss, four pellets, coiled filigree and three pellets on the horns.. See Higgins, R.A. *Greek and Roman Jewellery*. Gold, 3.12 grams, 25 mm. Extremely fine condition, complete. £450 - £600

*From an old English collection.*

398 **Roman Filigree Gold Pendant.** 1st-2nd century AD. A delicate pendant formed as an openwork container; the convex discoid lid with filigree border and central suspension loop; the openwork sides covered with filigree coils; the base with two wire feet. Higgins, R.A. *Greek and Roman Jewellery*. 1.63 grams, 20 mm. Very fine condition, one foot lost in antiquity. £120 - £180

*Possibly amuletic, or a keepsake.*

399 **Roman Figural Gold Pendant.** 1st-3rd century AD. A hollow pendant comprising a suspension loop and male bust, probably of Jupiter. Gold, 0.48 grams, 16 mm. Very fine condition. £120 - £150

*Found Market Rasen, Lincolnshire, England 1977.*



400

**400 Roman Gold-Mounted Antique Medusa Intaglio Pendant.** Circa 1st-3rd century AD. An amber-coloured intaglio of Medusa's head with radiating serpents, set in a later heavy gold disc pendant with large curled suspension loop. Gold, 19.47 grams, 40 mm. Very fine condition, some chipping to the intaglio. £400 - £600

*Ex Stark collection. The Gorgoneion or head of Medusa was a powerful protective symbol in the ancient world. The intaglio appears to have been re-set in the post-medieval period.*

**401 Roman Gold Amulet.** 1st century AD. A ceramic bar within a gold sleeve decorated with filigree; on the lower face a series of granulation pyramids; on the upper face a series of suspension loops with granule decoration. See Higgins, R.A. *Greek and Roman Jewellery*. Gold, 2.48 grams, 32 mm. Fair condition. Rare.

£80 - £120

*Ex Winter collection.*

**402 Roman Repoussé Gold Bracteate.** 3rd-4th century AD. A sheet gold discoid bracteate with repoussé decoration of a female bust within a laurel-leaf border; with paired piercings to allow it to be sewn onto a fabric backing. Gold, 0.52 grams, 33 mm. Fine condition.

£200 - £300

*Ex Hurst collection.*

**403 Roman Silver Lion Figurine.** Circa 1st century AD. Solid cast lion with detailed features, sitting facing, head erect and front right paw slightly extended. Silver, 28.9 grams, 32 mm. Extremely fine condition with superb detail. Very rare.

£350 - £500

*Purchased from a London auction house in the 1960's.*

**404 Roman Silver Hinged Bracelet.** 3rd century AD. A fabricated silver bracelet with hinged quadrant, formed as a narrow central band flanked by broader collars; the central section decorated with pelleted bands; the collars hollow, covered with a row of paired hollow half-bulbs; the hinge mechanism with original closing pin. Silver, 115 grams, 71 mm external diameter. Very fine condition, complete. Rare.

£400 - £600

*Ex Aston collection.*

**405 Roman Silver Bow Brooch.** 2nd-3rd century AD. A decorated P-shaped bow brooch with splayed upper terminal and pelleted wire collar below; the bow deep and decorated with triangular facetting; the footplate pelta-shaped and waisted, with pelleted wire collar above and granule finial; the spring, pin and catchplate intact on the reverse. Hattatt, R. *Brooches of Antiquity*. Silver, 17.3 grams, 55 mm. Very fine condition, complete.

£120 - £180

*From an old English collection.*



402



403



404



405





406

**406 Roman Figural Silver Hair Pin & Chain.** 1st century AD. A fine decorative pin comprising a long, round-section shaft with male head finial, with full features and curled hair; below this, the attachment ring for a chain terminating in a silver fish. Silver, 10.6 grams, 184 mm overall. Extremely fine condition, complete.

£500 - £700

*Found Eastern Empire.*



**407 Roman Intaglio Silver Ring.** 1st-4th century AD. A finger ring with expanding hoop; the bezel an elliptical intaglio bearing the image of a female in draped peplos robe with vegetation in one hand and a cornucopia in the other. See Higgins, R.A. *Greek and Roman Jewellery*. Silver, 18.80 grams, 28 mm external. (Approximate size UK X½, USA 11¾, Europe 27.51, Japan 26). Very fine condition, large and wearable.

£100 - £150

*From an old English collection.*



407

**408 Roman Engraved Intaglio Silver Ring.** 2d-3rd century AD. A finger ring with rounded hoop rising to an elliptical bezel with figural intaglio engraving. Silver, 5.41 grams, 21 mm overall. (Approximate size UK N, USA 6½, Europe 13.72, Japan 13). Very fine condition, complete.

£80 - £140

*Ex Winter collection.*



408

**409 Roman Intaglio Silver Ring.** 3rd-4th century AD. A round-section finger ring with slightly elliptical hoop; sub-spherical bosses on the shoulders flanking an elliptical bezel setting containing an amber-coloured intaglio depicting a tripod flanked by cornucopias, with a crow perched on the rim. Higgins, R.A. *Greek and Roman Jewellery*. Silver, 7.44 grams, 26 mm external. (Approximate size UK X½, USA 11¾, Europe 26.92, Japan 26). Very fine condition.

£320 - £400

*From an old English collection.*



409

**410 Roman Cameo Silver Pendant.** 1st-2nd century AD. A decorative pendant comprising an elliptical plate with pelleted border surrounding a female bust cameo with detailed coiffure; a pierced lobe above serves to accept the suspension loop. Silver, 4.15 grams, 25 mm. Very fine condition, complete.

£200 - £300

*Property of a Lady.*



410

411

**411 Roman Eros Silver Pendant.** 3rd-4th century AD. A cast pendant in the form of two erotes or cupids with an urn on a base. Silver, 0.99 grams, 13 mm. Very fine condition, the suspension loop fragmentary.

£90 - £120

*Property of a Lady.*



412

413

**412 Roman Silver Mouse Pendant.** 3rd-4th century AD. A mount or pendant in the form of a miniature mouse shown nibbling on a flat disc, probably bread; the ears alert, the paws extended to grip; the fur finely modelled with longitudinal strokes; the bread pierced to accept an attachment pin. Silver, 4.58 grams, 23 mm. Very fine condition, part of the tail missing.

£160 - £200

*From an old English collection.*

**413 Roman Silver Mounted Standing Figure Intaglio.** 1st-2nd century AD. A white glass convex intaglio of a robed standing figure, mounted en cabochon within an elliptical frame with alternating granule and bar detailing. Silver, 9.52 grams, 29 mm. Very fine condition.

£250 - £400

*Property of a Lady.*



414

**414 Roman Silver and Niello Inkwell.** 1st century AD. A fabricated hexagonal silver inkwell with nielloed designs, alternating geometric and plant-based; the cover with sunken central circular hole, surrounded by a wreath of leaves and berries; the underside with concentric circle panels and three flattened-boss feet. See Hobbs, R. and Jackson, R. *Roman Britain* fig.54. Silver, 44.5 grams, 46 mm height. Extremely fine condition, complete. Excessively rare. £4,500 - £6,000

*Property of a London gentleman. Hattatt, in Brooches of Antiquity lists a plate brooch (no. 1016) with an almost identical motif to that found on the lid; he dates the brooch to later in the 1st century AD.*



414

**415 Roman Silver-Gilt Cosmetic Spoon.** 1st-4th century AD. A Roman ligula or cosmetic spoon, formed as a plain, round-section shaft with a short waisted section; below this a concave bowl, with gilding intact on the inner surface. Silver-gilt, 11.0 grams, 129 mm. Very fine condition, with gilding nearly intact. £120 - £180

*From an old English collection. Spoons with long handles and small bowls were used by apothecaries in the preparation of medicines and cosmetics.*



415

**416 Roman Repoussé Silver Plaque.** 1st-2nd century AD. An elliptical plaque bearing the repoussé motif of a family group - a male and female holding hands with a child; the plaque is pierced at top and bottom for attachment. Silver, 3.93 grams, 60 mm (10cm high including stand). Very fine condition, light creasing. £220 - £300

*From an old English collection.*



416



417

417 **Roman Bronze Eros Statuette.** Circa 1st century AD. A large bronze figure of a young winged Eros supporting a long-stemmed cornucopia with cinquefoil mouth (a lotus blossom?); the face rounded with full features and open nostrils; the eyes inlaid with silver points; the hair loose and framing the face, with characteristic triangular profile; the head thrown back and tilted upwards towards the cornucopia mouth; the neck adorned with a ropework collar bearing a decorated discoid pendant; the left arm extended to the hand supporting the upper part of the stem (old minor repair evident); the right arm bent and hand turned down to grip the end of the stem; the wings emerging from the back feathered and slightly spread; the

legs straight and advancing on tiptoe; the base a waisted rectangle with lobed feet; the cinquefoil with central square-section spike. See *Metropolitan Museum of Art, New York, No. 97.22.5*, for a very similar but less attractive piece (with Eros holding a long branch). 990 grams, 268 mm. Very fine. Rare and most attractive. £18,000 - £24,000

*Eros, usually considered to be the son of Aphrodite and Ares but, according to Plato's Symposium, conceived by Poros (Plenty) and Penia (Poverty) at Aphrodite's birthday, was the god of sexual attraction and beauty and was worshipped as a fertility god. His Roman counterpart is Cupid (Desire) and then is usually depicted with a bow and arrows.*



418

**418 Roman Bronze Mercury Statuette.** 1st-2nd century AD. A cast figurine of a naked male, probably Mercury, wearing a pointed cap with winged projections, a baldric across his right shoulder, a drawstring purse symbolising wealth in his extended right hand, supporting a curved object in his left (perhaps a lyre); his feet attached to the circular base. 18 grams, 46 mm. Very fine condition, complete. £90 - £120

*Found Bedfordshire, England.*

**419 Roman Bronze Jupiter Figurine.** 1st-3rd century AD. A cast bronze statuette of a naked male, probably Jupiter (Zeus) with good facial detail, his hair and beard trimmed, his left arm raised and hand open, his right arm and hand extended, his left leg bent; the hands cast to accept additional items - thunderbolt and sceptre. 115 grams, 93 mm. Very fine condition. £600 - £900

*Found at Tadcaster, Yorkshire, England 1980. The statuette replicates the pose of the many copies of the lost life-size statue of Zeus Brontaios (the Thunderer) created by Greek master-sculptor Leochares in the mid-300s BC.*



419

**420 Roman Bronze Gladiator Statuette.** 1st century AD. A bronze statuette of a retiarius gladiator armed with a net and trident and with the characteristic galerus neck-guard at his shoulder; the figure is bare-headed with shaggy hair, left hand hollowed to accept the model net, in advancing pose; offered with custom stand. 40 grams, 63 mm. Very fine condition. Excessively rare. £4,000 - £6,000

*Purchased from a London auction house in the early 1970's. The retiarius represented the fisherman, and was set against the secutor huntsman.*

**421 Roman Bronze Leokampos Statuette.** 1st century AD. A cast bronze figurine of the fabulous leokampos with the foreparts of a lion and the hindparts of a fish; the head erect, jaws open, mane bristling and forepaws extended, the fish-tail looped. 46 grams, 65 mm. Very fine condition, complete. Excessively rare. £800 - £1,200

*Bought from a central London Antiquities dealer in 1958.*



420



421



422

**422 Roman Bronze Constantine Period Horse Figurine.** 4th century AD. A superb cast bronze model of a leaping stallion in harness with extended forelegs; the base with attachment peg; offered with a custom stand. 36 grams, 53 mm long. Very fine condition, complete. £950 - £1,250

*From an old English collection.*

**423 Roman Bronze Bird Brooches.** 1st-2nd century AD. Three cast bronze aviform brooches comprising: a bird-in-flight brooch with spring mechanism in its tail, punched triangle border to wings and tail; a bird at rest brooch with spring mechanism beneath its tail; a swan or goose with recurved neck, the beak joined to the bird's back. Hattatt, R. *Ancient Brooches and Other Artefacts*, no.1637; *Brooches of Antiquity*, nos. 1157, 1159. 9.02 grams, 35 mm; 6.62 grams, 30 mm; 8.65 grams, 31 mm. Very fine condition, two with pins. Rare. [3] £150 - £200

*The swan with recurved neck is an unusual form, not recorded in Hattatt.*

**424 Roman Bronze Axe Plate Brooch.** 2nd century AD. A copper-alloy plate brooch in the form of a double-bladed axe; the pin mechanism and catchplate present on the reverse. Hattatt, R. *Ancient Brooches and Other Artefacts*. 10 grams, 46 mm. Very fine condition, complete. £120 - £180

*From an old English collection.*

**425 Roman Bronze Crossbow Brooch.** 3rd-4th century AD. A very large crossbow brooch fabricated from hollow-cast bronze sections; the arms plain, terminating in onion-shaped knobs; a third knob above the bow; the pin hinged on the rear of the arms; the bow deep and of trapezoidal section, with annular punchmarks on the upper face; the expanding footplate with a medial row of notches between ring-and-dot motifs and central chamfer; the catchplate extending the full length of the foot. Hattatt, R. *Brooches of Antiquity*, items 1265-7. 105 grams, 150 mm. Extremely fine condition. £250 - £350

*From an old English collection.*

**426 Roman Inscribed Bronze Crossbow Brooch.** 3rd-4th century AD. A large, decorative brooch, fabricated from a number of hollow cast pieces, thus reducing its weight; the headplate with 'onion' terminals and a third above the junction with the bow, each with a silver collar; the footplate comprising a tubular catchplate behind the covering mantlet with openwork border; the D-section bow with inlaid silver designs: a plain fillet on the outer face, VT EFI on the right face and LOV II on the left. Hattatt, R. *Iron Age and Roman Brooches*, p.135. 37 grams, 93 mm. Very fine condition, complete. £220 - £280

*From an old English collection. The text VT EFI is an abbreviation for utere felix 'use [this] with joy'; the text LOV II is probably an abbreviated personal name.*



424



425



426



427

**427 Roman Bronze Rings.** 2nd-3rd century AD. A plain finger ring comprising an expanding hoop rising to an elliptical bezel with a red gemstone intaglio displaying a kantharos drinking vessel; offered with a finger ring with D-section hoop rising to trefoil shoulders flanking a circular bezel with incuse zoomorphic design. 4.49 grams, 21 mm overall (approximate size UK G, USA 3¾, Europe 4.92, Japan 4); 4.67 grams, 23 mm overall (Approximate size UK P, USA 7½, Europe 16.23, Japan 16). Very fine condition, complete and wearable. [2]

£120 - £180

*Ex Aston collection.*

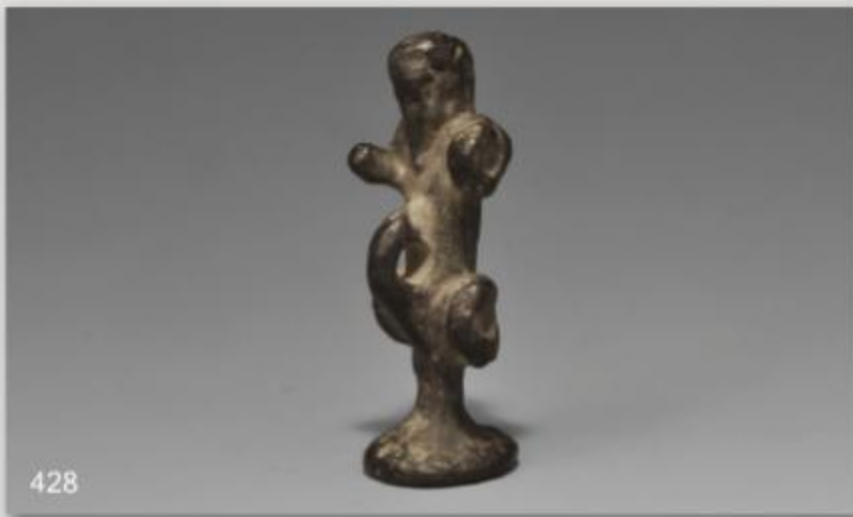


430

**430 Romano-British Bronze Gaulish Captive Mount.** 1st century AD. A cast bronze mount in the form of a captured enemy warrior, shown naked, with elongated face, back-combed hair and beard, hands tied at the wrist below the chin, legs bound at the ankles; the ropework band extends around the neck, across the wrists, down the legs to the ankles; an attachment peg is placed on the figure's back. 28 grams, 37 mm. Very fine condition, complete.

£450 - £600

*From an old English collection. The peg's attachment point on the figure's back implies that the captive was displayed supine, probably on a military trophy.*



428

**428 Roman Bronze Phallic Pendant.** Circa 3rd century AD. A cast bronze figurine of Triton with coiled fish-tails in place of his arms and legs; the head elongated; the phallus recurved to meet the body, forming a suspension loop; the torso descending in a column to the discoid base. 34 grams, 51 mm. Very fine condition, complete.

£60 - £90

*Found Greece in 19th century.*



431

**431 Roman Bronze Winged Triton Mount.** 1st-2nd century AD. A cast bronze mount or pendant in the form of Triton; the head erect, the hands clasped on the chest, the wings unfurled, the scaled fish-tail spread to balance the posture of the wings; a suspension loop behind the head. 18 grams, 35 mm. Very fine condition, slight loss to the loop.

£100 - £150

*Ex Lowe collection.*



429

**429 Roman Bronze Phallus Pendant.** 1st-2nd century AD. A convex Y-shaped pendant comprising a ribbed central lozenge and suspension loop, the arms terminating in a phallus and a hand; a phallus placed centrally above a finial knob. See Appels, A. and Laycock, S. *Roman Buckles and Military Fittings*. 29 grams, 62 mm. Very fine condition, complete.

£80 - £120

*From an old English collection.*



432

**432 Roman Bronze Faunus Mount.** 1st-2nd century AD. A bronze D-shaped plaque with the head of Roman Faunus or Greek Pan emerging, hollow, modelled in the round; the horns emerging from the brow, the hair full, a row of annulets around the neck; on the reverse, an attachment spike. 14 grams, 31 mm. Very fine condition.

£240 - £300

*Property of a Gentleman.*



433

433 **Roman Bronze Cupid Mount.** 1st-4th century AD. A decorative mount in the form of a cherubic face, probably Cupid god of love, with rounded cheeks, fleshy features and long curled locks. Murawski, P.G. *Benet's Artefacts of England and the United Kingdom*, Ely, 2003, p.164. 80 grams, 52 mm. Very fine condition.

£180 - £240

*Found St Albans, Hertfordshire, England.*

434 **Roman Bronze Female Bust Mount.** 1st century AD. A cast bronze mount in the form of a female with tightly tied hair; the clothing shown loosely draped; a pelleted band to the neck; an attachment peg in place on the concave reverse. See Green, M. *The Gods of Roman Britain* for a similar portrayal (in stone) of Dea Mater from Cirencester, Gloucestershire. 22 grams, 45 mm. Very fine condition, the facial features abraded.

£40 - £60



435

435 **Roman Bronze Gorgon Mount.** 2nd century AD. A cast bronze discoid mount with a female head modelled in the half-round; the face rounded and full, the hair carefully depicted with serpents' heads on each side of the face; a larger serpent emerging centrally above the brow; the surround decorated with regular incised vinescroll motifs; supplied with custom stand. 140 grams, 71 mm. Very fine condition, complete.

£260 - £300

*From an old English collection. The 'Medusa-head' or gorgoneion was a protective amulet widely used in the ancient world.*



436

436 **Roman Bronze and Silver Figural Mount.** 4th century AD. A pelta-shaped mount with opposed lion-head terminals; the applied central silver roundel showing a scene involving a horse and a winged figure; the roundel with a secondary piercing; the attachment pins still in place on the reverse. 9.34 grams, 36 mm. Very fine condition.

£160 - £200

*From an old English collection. The secondary piercing may indicate re-use as a pendant.*



437

437 **Roman Bronze Mounts and Phalera.** 1st-2nd century AD. A mixed group of cast bronze mounts: a discoid lion-head modelled in the round with snarling features; a head of Eros with rounded features on a chevron of foliage with lobed lateral extensions; a phalera depicting a female (Juno?) with coiled coiffure. 135 grams total, 34 - 44 mm. Very fine condition. [3]

£240 - £300

*From an old English collection.*



438

438 **Roman Bronze Leonine Sword Pommel.** 2nd-3rd century AD. A hollow-cast bronze pommel cap in the form of a lion's head with gaping mouth, flattened ears and flowing mane; behind the head a collar of parallel facets. 90 grams, 52 mm. Fine condition.

£150 - £200

*Property of a Gentleman.*



439

439 **Roman Bronze Horse Head Mount.** 3rd-4th century AD. A cast mount in the form of an equine head and neck, the ears erect, the neck arched, the nostrils flared; the attachment plate long and rectangular. 23 grams, 41 mm. Very fine condition. £120 - £180

*From an old English collection.*



440

440 **Roman Bronze Elephant Casket Leg.** 1st-2nd century AD. A cast bronze casket leg in the form of an elephant's head with rounded ears and short tusks, a studded band above its brow, its trunk wound around a claw. 20 grams, 38 mm. Very fine condition, complete. Extremely rare. £350 - £500

*From an old English collection.*



441

441 **Roman Bronze Ram's Head Patera Handle.** 1st-3rd century AD. A hollow cast bronze handle for a patera with its finial in the form of a ram's head with short snout, broad brow and spiral horns projecting on each side; behind the head a ribbed collar developing to a short shaft, rounded beneath and faceted above, decorated with incised triangle and scroll motifs; a second collar at the junction with the pan. 135 grams, 109 mm. Very fine condition. £70 - £100

*Property of a deceased estate.*



442

442 **Roman Bronze Miniature Rudder.** 1st century AD. A miniature ship's rudder, probably forming part of a devotional statue of Fortuna, goddess of chance and good outcomes; the blade wide with a central stem, on which are mounted the transverse tiller and knob at the top. Green, M. *Gods of Roman Britain*. 37 grams, 126 mm. Very fine condition. £120 - £180

*From an old English collection. Fortuna and Victoria were the principal deities worshipped by the Roman military; Fortuna was especially associated with bathhouses, where men were most vulnerable.*



443

443 **Roman Bronze Oil Lamp.** 3rd century AD. A cast bronze oil lamp with collared spout; ropework border to the spout and central perforation; piriform reflector with knob finial; chain and suspension loop. 190 grams, 117 mm. Very fine condition, complete. £500 - £700

*Property of a Gentleman.*





444



445

444 **Roman Bronze Mirror Set.** 1st-3rd century AD. A set of two cast bronze mirrors, discoid, the upper mirror convex; with concentric circle decoration on the outer faces. 290 grams, 114 mm diameter. Very fine condition, complete. [2] £260 - £340

*From an old English collection.*

445 **Roman Bronze Decorated Mirror.** 1st century AD. A cast bronze bifacial disc, convex on one side and concave on the other, with bevelled edge; both faces polished to a reflective surface; the concave face decorated with ten intersecting bilinear arcs; supplied with custom built stand. 18 grams, 62 mm diameter. Very fine condition, complete. £240 - £300

*Property of a Gentleman.*



446

446 **Roman Bronze Pyxis Cosmetic Pot and Lid.** 1st-4th century AD. A waisted cylindrical pot with a medial band of vinescroll decoration; the lid domed with a knob handle, with four long and four short radiating leaf motifs; the rim punched with roundel motifs. 42 grams, 53 mm overall height. Fine condition, complete and undamaged. Rare. £120 - £180

*Ex Coombe collection.*



447

447 **Roman Bronze Zoomorphic Scalpel.** 1st-2nd century AD. A scalpel or surgical knife formed as a pointed ferrous blade set into a cast bronze handle in the form of a dolphin gripping the blade in its jaws. 17 grams, 99 mm. Very fine condition, complete. £80 - £120

*Ex an old German collection, found in the Danubian region.*



448

448 **Roman Bronze Medical Spoon.** 2nd-3rd century AD. A medical or cosmetic spoon with a long, round-section handle extending to a flat panel and bowl; a knob at the tip of the handle; the bowl shallow with a pouring lip to one side. 7 grams, 117 mm overall. Very fine condition, complete. £120 - £180

*Purchased from a central London dealer, a copy of the old listing included in the sale.*



449

449 **Roman Bronze Wax Tablet Stylus.** Circa 2nd century AD. A cast bronze round-section stylus with a broad, flat scraper at one end and a fine point below a bulb at the other; a cross-hatched panel on the shaft close to the scraper. 7 grams, 128 mm. Extremely fine condition, complete. £60 - £90

*Found Hampshire, England 1984.*



450

450 **Roman Bronze Phallic Seal Box.** 2nd-3rd century AD. A cast piriform bronze seal box in two sections: the tray concave with three large perforations in the base; the lid with moulded phallus motif, with provision for enamel inlay in the glans; a transverse slot for the passage of the cord. 7.83 grams, 32 mm. Very fine condition, complete. £80 - £120

*Ex CNG MBS 63 (21 May 2003), lot 2043.*



451

451 **Roman Bronze Knife Handles.** 1st-3rd century AD. A cast bronze knife-handle in the form of the bust of a warrior in a bronze cuirass with carefully sculpted hair; offered with a cast bronze knife-handle in the form of an openwork column of vineleaves, rising to a thick collar with bird-head pommel emerging; below the lower collar, the pierced attachment panels for the blade. 35 grams, 41 mm (bust), 44 grams, 67 mm (bird). Very fine condition, complete. [2] £250 - £300

*From an old English collection.*



452

452 **Roman Bronze-Mounted Iron Knife.** 1st century BC-2nd century AD. A forged iron knife with cast bronze fittings; the blade straight on the cutting edge, curved on the back; the grip trapezoidal with two fixing rivets for the scales; the upper bolster annular; above and below the grip, two cast bronze collars with transverse rib decoration; supplied with custom stand. 258 mm overall length excluding stand. Extremely fine condition. £160 - £240

*Found near Belgrade, Serbia; from an old European collection.*



453

453 **Roman Iron Knife with Suspension Ring.** 1st-2nd century AD. A forged iron knife with sharply pointed, shallow s-curved blade of thick triangular section; the tang of flat section with three sturdy attachment rivets for the (wooden or bone) scales; the tang ending in a loop with suspension ring attached. 440 grams, 465 mm including ring. Very fine condition. £200 - £300

*From an old English collection.*



454

454 **Romano-Celtic Bronze Mounted Linch Pin.** 1st century AD. An iron round-section linch pin from a chariot with cast bronze fittings; at the lower end, a bell-shaped knob and collar, at the upper, a concave disc with concentric circle decoration set across the radius of the pin. 60 grams, 119 mm. Very fine condition, the iron stabilised and slightly restored. £220 - £280

*Found near York, Yorkshire, England.*



455



456



457

**455 Roman Marble Figural Plaque.** Circa 1st century AD. A carved marble plaque of trapezoidal section, with reserved figure of naked Eros holding a ring; the figure's features rounded, his right hand extended, his left hand raised, holding a wreath; his legs straight; to his left, part of a D-shaped object, perhaps a bowl; the left and lower edges with plain raised border; supplied with a custom-made stand. 610 grams including stand, 119 mm. Very fine condition.

£450 - £600

*From an old English collection.*

**456 Roman Marble Female Figurine.** 1st-2nd century AD. A carved figurine or fresco fragment depicting a female with carefully dressed hair, wearing a loosely-draped chinon garment, her left hand on her hip, her right arm extended, her head tilted to her right; with custom stand. 2.5 Kg, 20 cm including stand. Fine condition.

£950 - £1,250

*From an old English collection.*

**457 Roman Marble Head of a Senator.** Circa 2nd century AD. Depicted with receding hair, the lidded eyes recessed beneath a heavily furrowed brow. 400 grams, 125 mm high including stand. Fine condition.

£550 - £750

*From an old English collection.*



458 **Roman Marble Bearded Male Bust.** Circa 2nd century AD. Depicted with thick wavy hair, the lidded eyes recessed beneath a furrowed brow, with full beard and moustache, the lips slightly parted. 545 grams, 140 mm including stand. Fine condition. £450 - £600

*From an old English collection.*

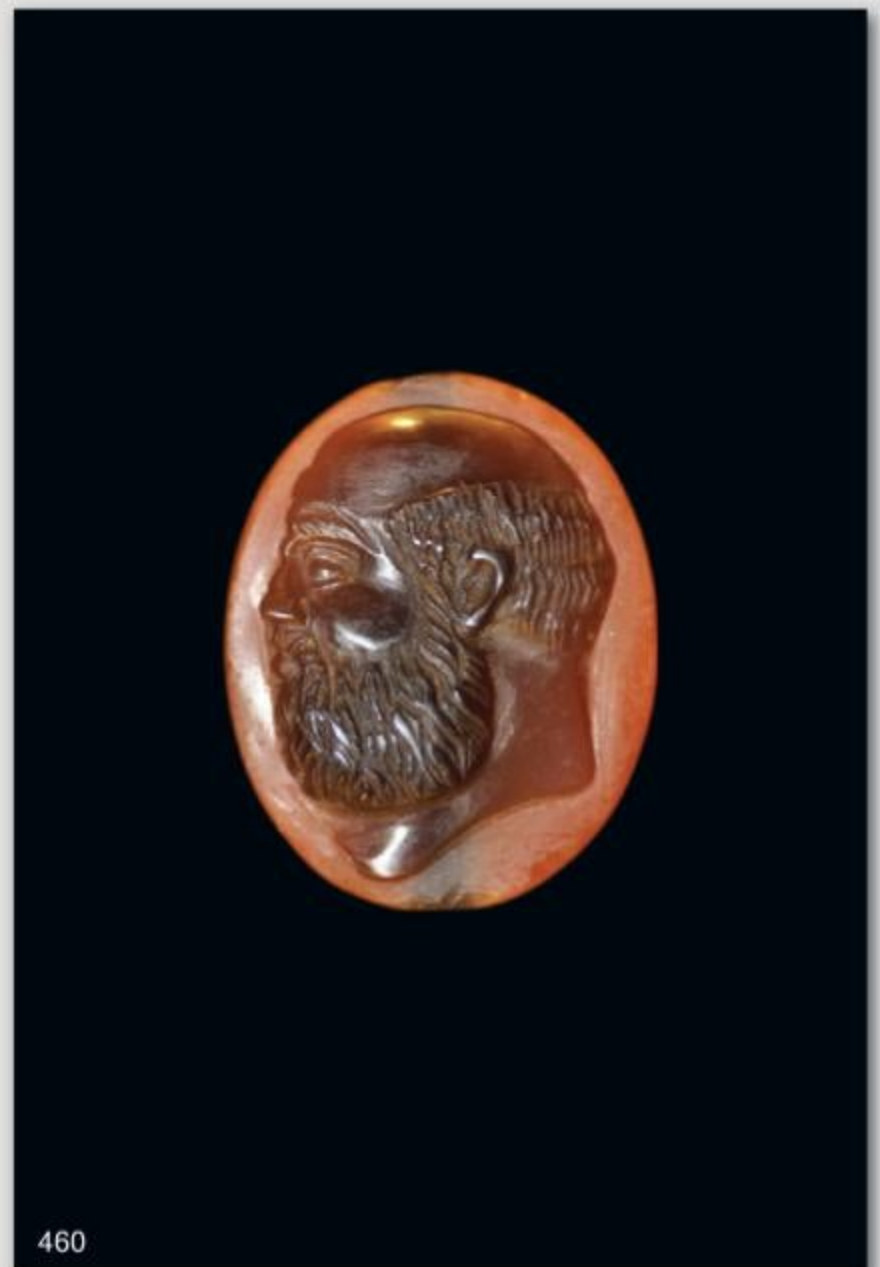


459 **Roman Marble Head of a Female.** Circa 2nd-3rd century AD. With centrally parted wavy hair framing her face, the lidded eyes recessed beneath her pronounced eye brows, the lips pursed. 475 grams, 130 mm including stand. Fine condition. £450 - £600

*From an old English collection.*

460 **Roman Socrates Cameo.** 2nd-3rd century AD. An elliptical carnelian cameo featuring the bearded bust of the philosopher, Socrates; pierced longitudinally for suspension. 6.79 grams, 27 mm. Extremely fine condition. Rare. £1,600 - £2,000

*Purchased on the London art market in the 1950's.*





461

**461 Roman Decorated Bone Comb.** 2nd-3rd century AD. A carved bone haircomb with fine teeth, decorated on both faces; on the outer face, a panel of ring-and-dot decoration with cross-hatching and on the inner a symmetrical array of ring-and-dot motifs; the upper edge ornamented with an opposed pair of hares, carved in the round; the edge pierced by a circular hole to accept a securing hairpin. 13 grams, 43 mm. Very fine condition, complete. £220 - £280

*From an old English collection.*



462

**462 Roman Bone Spoon & Horse Brooch.** 3rd century AD. A bone ligula or cosmetic spoon carved as a narrowing shaft with ribbed detailing and small (8mm) finial bowl; offered with an unusual zoomorphic bow brooch in the form of a horse with the pin hinged on the headplate formed from the expanding rear legs. Hattatt, R. *Ancient Brooches and Other Artefacts*, item 1644. 1.57 grams, 102 mm (spoon); 12.2 grams, 41 mm (brooch). Very fine condition, complete. [2] £50 - £70

*The brooch is associated by Hattatt with the Pannonian region, north-east of the Alps.*



463

**463 Roman Ribbed Ware Amphora.** 4th-5th century AD. A small amphora of light cream-grey fabric, elongated conical body with two long handles from top of neck to shoulder. 570 grams, 25 cm. Fine condition. £160 - £240

*From an old English collection.*

**464 Roman Redware Jar.** 3rd century AD. A European redware jar with tapering body, small foot and wide mouth. 135 grams, 68 mm high. Very fine condition, undamaged. £120 - £180

*From an old German collection.*



464



465

465 **Roman Green Glass Storage Jar.** Circa 4th-5th century AD. The rounded inverted rim with pinched-out ridge below, conical neck and elongated iridescent globular body with inverted base. 100 grams, 110 mm high. Very fine condition, and undamaged.

£160 - £240

*Property of a Gentleman.*

466 **Roman Green Glass Pear-Shaped Vessel.** 2nd century AD. A green glass bottle, its cylindrical neck surmounted by a wide everted rim; its body pear-shaped with concave base, with areas of iridescence. 55 grams, 157 mm high. Very fine condition and undamaged.

£120 - £180

*Property of a Gentleman.*

467 **Roman Green Glass Jug.** 1st century AD. A glass jug comprising globular base, short, tubular stem, round-section collar and scrolled handle; the glass pale green with slight surface sheen. 85 grams, 68 mm. Very fine condition, complete.

£140 - £180

*Ex Glover collection.*

468 **Roman Green Glass Vessel.** 2nd century AD. A green glass bottle, its cylindrical neck surmounted by a wide everted rim; its body conical with concave base, with areas of iridescence. 60 grams, 168 mm high. Very fine condition, uncleaned and undamaged.

£120 - £180

*Property of a Gentleman.*

469 **Roman Green Glass Vessel.** 2nd century AD. A green glass bottle, its cylindrical neck surmounted by a wide everted rim; its body conical with concave base, with areas of iridescence. 65 grams, 158 mm high. Very fine condition, uncleaned and undamaged.

£120 - £180

*Property of a Gentleman.*

470 **Roman Eastern Mediterranean Glass Bottle.** 4th century AD. A tall necked iridescent bottle with flaring mouth, bulbous body and concave base. 40 grams, 127 mm high. Very fine condition, undamaged.

£125 - £185

*Property of a Gentleman.*

471 **Roman Eastern Mediterranean Green Glass Bottle.** 4th century AD. A short necked iridescent bottle with flaring mouth, bulbous body with pinched sides and shallow concave base. 30 grams, 52 mm high. Very fine condition, undamaged.

£120 - £180

*Property of a Gentleman.*



471



466



467



468



469



470



472



473



474

**472 Roman Eastern Mediterranean Glass Jar.** 4th century AD. A fully iridescent jar with flaring mouth, piriform body and concave base. 70 grams, 97 mm high. Very fine condition, undamaged.

£125 - £185

*Property of a Gentleman.*

**473 Roman Eastern Mediterranean Green Glass Bottle.** 4th century AD. A green glass bottle with flaring mouth, bulbous body and concave base. 55 grams, 117 mm high. Very fine condition, undamaged.

£110 - £150

*Property of a Gentleman.*

**474 Roman Eastern Mediterranean Green Glass Bottle.** 4th century AD. A tall necked iridescent bottle with flaring mouth, bulbous body and concave base. 80 grams, 143 mm high. Very fine condition, undamaged.

£110 - £150

*Property of a Gentleman.*

475

**475 Roman Eastern Mediterranean Green Glass Bottle.** 4th century AD. A short necked iridescent bottle with flaring mouth, bulbous body and concave base. 35 grams, 74 mm high. Very fine condition, undamaged.

£110 - £150

*Property of a Gentleman.*

**476 Roman Eastern Mediterranean Green Glass Bottle.** 4th century AD. A tall necked iridescent bottle with flaring mouth, bulbous body and concave base. 50 grams, 120 mm high. Very fine condition, undamaged.

£110 - £150

*Property of a Gentleman.*

476

**477 Roman Eastern Mediterranean Mould-Blown Glass Sprinkler Flask.** Circa 4th-5th century AD. The spherical body decorated with radiating ribs; with an internal constriction at the base of the neck and flared mouth beneath the double rim. 65 grams, 94 mm high. Very fine condition, complete and undamaged.

£120 - £180

*Property of a Gentleman.*

**478 Roman Eastern Empire Green Glass Bottles.** Circa 400 AD. Two tall necked iridescent bottles with slightly flaring necks and small applied handles, bulbous bodies and concave bases; the larger with heavily inverted sides. 445 grams total, 130 mm and 200 mm high. Very fine condition. [2]

£300 - £400



477



478



479

479 **Byzantine Gold Spiral Openwork Ring.** 4th-7th century AD. A heavy finger ring, the hoop executed in openwork scrolls within a frame, bordered by heavy granulation; the bezel a discoid pad from which emerge five foil leaves forming the support for a garnet set en cabochon in a gold cell. Gold and garnet, 32.69 grams, 41 mm overall. (Approximate size UK Q½, USA 8½, Europe 18.62, Japan 18). Extremely fine condition. £1,800 - £2,400

*Bought from a London auction house in the 1970's.*

480 **Byzantine Gold Filigree Ring.** 5th-8th century AD. A finger ring comprising a longitudinally ribbed hoop with granule triangles on the shoulders; the bezel formed as a convex disc with a filigree border, set with granules in filigree collars and four filigree scrolls. Oman, C.C. *Victoria and Albert Museum Catalogue of Rings*, 1930. Gold, 4.11 grams, 23 mm overall. (approximate size UK W½, USA 11¼, Europe 25.97, Japan 25). Extremely fine condition, complete. £400 - £600

*Property of a Lady.*

481 **Byzantine Gold Iconographic Signet Ring.** Circa 7th century AD. A finger ring comprising a plain, round-section hoop and an integral elliptical bezel engraved with a religious icon: a male figure with a halo and two equal-arm crosses. See Oman, C.C. *Victoria and Albert Museum Catalogue of Rings 1930*, plates VII and VIII. Gold, 12.78 grams, 28 mm overall. (Approximate size UK W½, USA 11¼, Europe 25.97, Japan 25). Very fine condition. £900 - £1,200

*Property of a Lady.*

482 **Byzantine Gold Monogram Ring.** 8th-9th century. A finger ring comprising a plain round-section hoop with attached disc bezel bearing a monogram in the shape of a cross. Gold, 2.90 grams, 18 mm external. (Approximate size UK F, USA 2¾, Europe 3.42, Japan 4). Very fine condition, complete. £800 - £1,200

*Property of a Lady. The monogram comprises inter alia a cross, alpha and omega and may have had religious associations.*



480



481



482





483

**483 Byzantine Gold and Sapphire Pendant Cross.** 5th-8th century AD. A hollow fabricated gold pendant in the form of a cross with suspension loop above; centrally a blue gemstone mounted en cabochon. Gold, 5.07 grams, 47 mm. Extremely fine condition, complete. £400 - £600

*Ex Hurst collection.*



484

**484 Byzantine Gold and Garnet Pendant Cross.** Circa 7th century AD. A hollow gold expanding cross pendant with granulated decoration, each limb formed of sheet gold with flat end closures; the centre with a gold setting enclosing a flat bed garnet, the ribbed suspension loop neatly affixed. Gold and garnet, 3.36 grams, 31 mm. Extremely fine condition. £800 - £1,200

*Purchased on the German art market in 1962.*

**485 Byzantine Gold and Garnet Pendant Cross.** 8th-9th century. A hollow fabricated cross pendant with ribbed suspension loop; the upper surface with a square cell, in which a garnet is set en cloison; the cell surrounded by filigree volutes; each arm with a central granule and further scroll on the outer edge. Gold, 4.40 grams, 38 mm. Extremely fine condition. £1,500 - £1,800

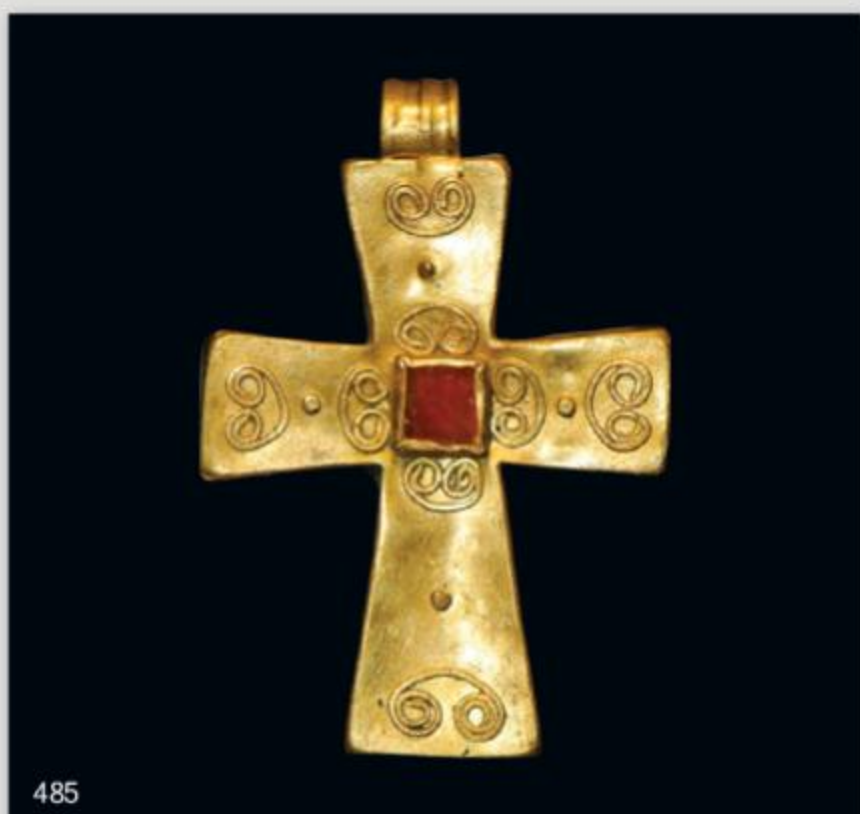
*Property of a Lady.*

**486 Byzantine Pair of Gold Disc Earrings.** 4th-7th century AD. A pair of gold earrings comprising u-shaped suspension wire terminating in a disc decorated with a filigree border enclosing a design of three spirals and four granules. See Higgins, R.A. *Greek and Roman Jewellery*. Gold, 2.02 grams, 24 mm overall. Very fine condition. £220 - £280

*Property of a Lady.*

**487 Byzantine Pair of Gold and Pair of Silver Earrings.** 5th-8th century AD. A pair of gold hoop earrings with openwork filigree bulbs; offered with a pair of silver hooked earrings with pendants in the form of a ribbed shaft with pyramidal granule finial. Higgins, R.A. *Greek and Roman Jewellery*. Gold, 0.64 grams total, 16 mm; silver, 2.76 grams total, 36 mm overall. Very fine condition, complete. [2 pairs] £120 - £180

*Ex Winter collection.*



485



486

488 **Byzantine Silver Rings.** 5th-7th century AD. A finger ring comprising a plain, flat-section hoop supporting a flat disc bezel with filigree border and granulation in a quincunx formation; offered with a large, plain silver finger ring with D-section hoop. Oman, C.C. *Victoria and Albert Museum Catalogue of Rings 1930*, pl.VIII no.223. Silver, 2.90 grams, 18 mm overall (approximate size UK J½, USA 5, Europe 9.32, Japan 9); 2.96 grams, 24 mm external (approximate size UK W, USA 11¼, Europe 25.60, Japan 24). Very fine condition, complete and wearable. [2] £100 - £150

*Bought in Bath, Somerset, England 1992.*

489 **Byzantine Silver Chi-Rho Pendant.** 5th-8th century AD. An openwork circular pendant with 'XP' (chi and rho) monogram within, the letters alpha and omega inserted between the arms of the chi; traces of gilding within the design; suspension loop attached above the rho. Silver-gilt, 7.19 grams, 33 mm. Very fine condition, complete. £160 - £240

*From an old English collection.*

490 **Byzantine Silver Bifacial Cross Pendant.** 12th century AD. A cast pendant comprising an ornate cross with foliate arms and bulb finials, with a central boss; above the upper bulb a three-ribbed suspension loop. Silver, 15.06 grams, 52 mm. Very fine condition, complete. Scarce. £160 - £200

*From an old English collection.*

491 **Byzantine Silver Sword Belt Mount Set.** Circa 10th-11th century AD. Comprising eighteen cast silver elements of a belt mount set, each having four quatrefoil voids. Silver, 166 grams total, 32 - 35 mm each. Very fine condition, good quality silver. [18] £700 - £900

*Ex Coombe collection.*



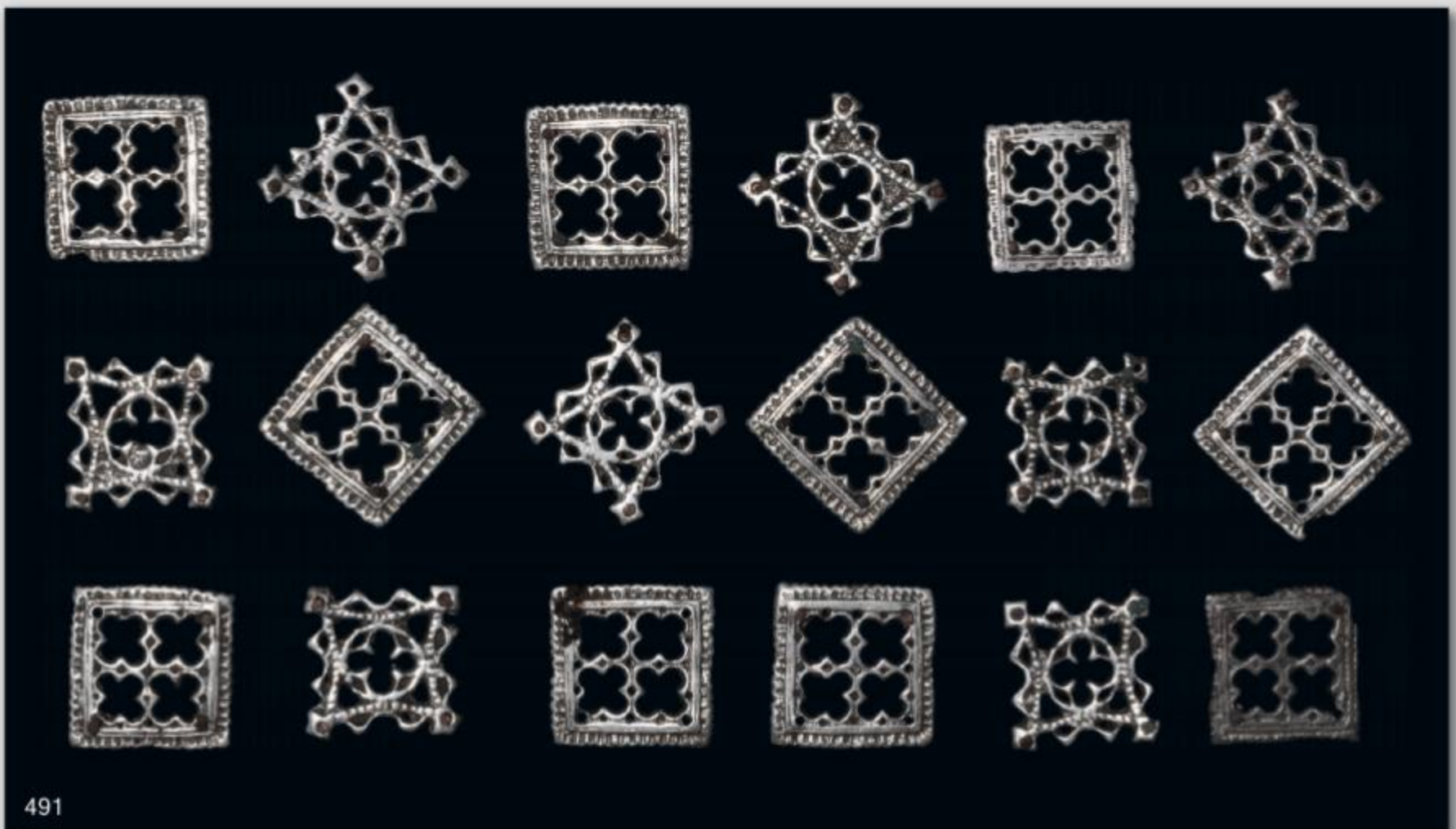
488



489



490



491



492

**492 Byzantine Silver Openwork Buckle and Bracelet.** 4th-7th century AD. A concave openwork buckle with integral plate and kidney-shaped loop; the plate waisted and formed with five lobes on the rear edge, pierced with a scrolled motif; the D-section tongue carinated and with a transverse collar; the fixing loops in place on the underside; offered with a silver round-section kolben bracelet with clubbed ends. See Menghin, W. *The Merovingian Period - Europe Without Borders*. Silver, 36 grams, 53 mm (buckle), 38 grams, 72 mm (bracelet). Very fine condition, complete. [2] £220 - £300

*From an old English collection.*



493

**493 Byzantine Monogrammed Silver Buckle Plate.** 4th-7th century AD. A silver miniature buckle plate, the decoration comprising a pair of addorsed wings above a roundel bearing a complex monogram; at the top, a pair of recurved straps to retain the loop and pin. See Menghin, W. *The Merovingian Period - Europe Without Borders*. Silver, 2.79 grams, 28 mm. Very fine condition. £160 - £200

*Property of a Gentleman.*



494

**494 Byzantine Silver and Bronze Cross Mounts.** 5th-8th century AD. A mixed group of cruciform mounts: one cast in bronze with expanding arms terminating with bulbs at each corner, decorated with punched annulets; one in silver with lobed corners, fretwork panels on the arms, a central disc with engraved chi-rho, and suspension loop above; one in bronze with expanding arms, pierced twice for attachment. 145 grams total, 35 - 104 mm. Very fine condition. [3] £350 - £500

*Property of a Gentleman.*



495

**495 Byzantine Bronze Reliquary Cross.** 4th-7th century AD. A bifacial crucifix pendant formed as a pair of convex cast plates bearing images of male figures, one robed and cowled, his arms outstretched, beneath a cross; the other in an elaborate robe, his head nimbate and his arms raised in the classical orans posture; the plates connected at the top to a hinge and suspension loop, and at the bottom to a hinge. 28 grams, 76 mm. Very fine condition, complete. £160 - £200

*From an old English collection. The pendant is cast hollow to accept a portion of a holy relic, making it a reliquary.*



496

**496 Byzantine Carved Bone Angel Disc.** 8th-9th century AD. An iconographic half-round carving of an angel on a discoid plaque; the face naturalistic with carefully rendered eyes and hair, the hands raised to the chest; the garments loosely draped; the wings erect with layers of feathers; the head surrounded by a nimbus with ring-and-dot motifs; the background with an external border of ring-and-dot motifs. 25 grams, 47 mm overall height. Very fine condition, complete. £400 - £600

*Property of a Gentleman.*

**497 Byzantine Archer's Ring and Inscribed Cross Pendant.** 4th-8th century AD. A copper-alloy thumb-ring, elliptical in plan with a triangular extension with incised geometric decoration; offered with a hollow, concave cruciform pendant with inscribed text 'I/NH+KA/X'. 8.05 grams, 35 mm (ring); 7.39 grams, 48 mm (pendant). Very fine condition, some wear. [2] £60 - £90

*Ex Coombe collection.*



497



498

498 **Byzantine Carved Tufa Ossuary Casket.** 6th-8th century AD. A carved stone Christian ossuary casket with figural scenes on three faces and the lid; on the left end panel, within an arch a winged angel genuflecting before a seated figure (Christ), the angel's hand on the figure's lap, the figure's right hand raised and left hand on the angel's head; on the right end panel, within an arch two robed female figures embracing (Mary discovering the empty tomb of Christ); on the front panel, two scenes within adjacent arches, on the left a seated mother and baby flanked by two kneeling males (Magi?), on

the right a female placing a baby into a container, watched by a kneeling male and two animals (the Nativity); on the lid, within a sculpted egg-and-reel border, a male bust within a florid frame, flanked by an opposed pair of winged bulls against a background of vegetation; two support bars with angled animal-head finials. 3.07 Kg, 190 mm overall length. Very fine condition and complete. Extremely rare. £300 - £500

*Ex Winter collection.*



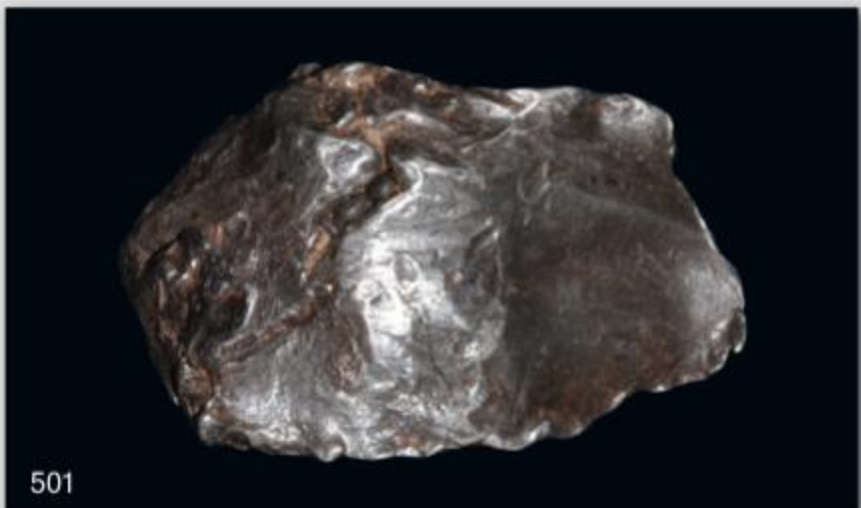
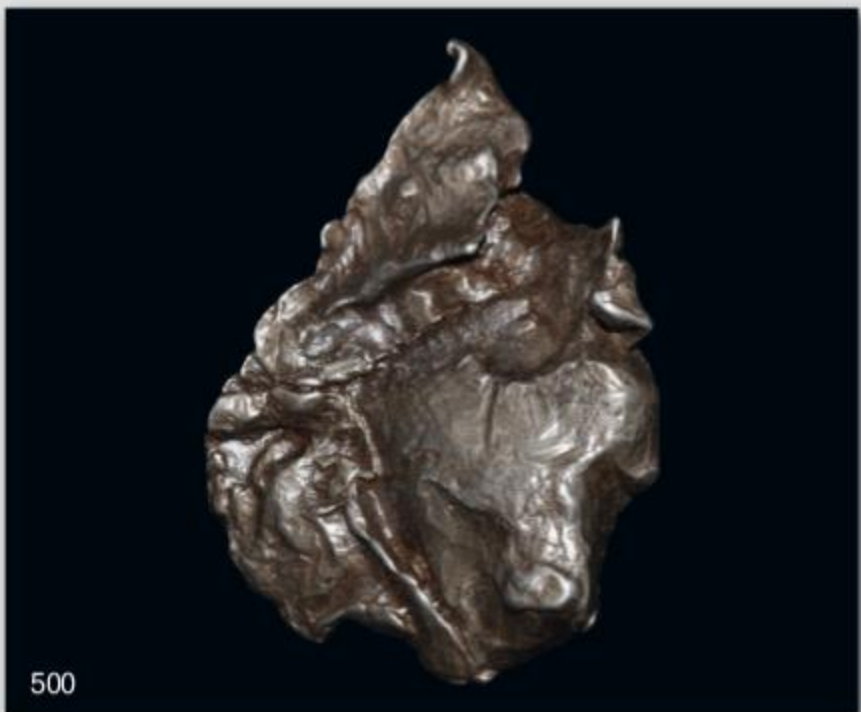
498



**499 Geological Large Piece of Sikhote Alin Meteorite.\*** A very large piece of the the Sikhote-Alin meteorite, showing the characteristic outer crust layer, with deeply etched 'speed lines' caused when entering the earth's atmosphere. Classified as an iron meteorite belonging to the chemical group IIAB and with a coarse octahedrite structure. See *Meteoritical Bulletin* and database. 4.5 Kg, 36 cm high including stand. Very fine condition. Large and thus extremely rare. £6,000 - £7,000

**500 Geological Sikhote Alin Meteorite.\*** An entire piece of the the Sikhote-Alin meteorite, showing the characteristic outer surface. Classified as an iron meteorite belonging to the chemical group IIAB and with a coarse octahedrite structure. See *Meteoritical Bulletin* and database. 180 grams, 77.90 mm. Very fine condition. Scarce. £100 - £150

**501 Geological Sikhote Alin Meteorite.\*** An entire piece of the the Sikhote-Alin meteorite, showing the characteristic outer surface. Classified as an iron meteorite belonging to the chemical group IIAB and with a coarse octahedrite structure. See *Meteoritical Bulletin* and database. 65 grams, 53 mm. Very fine condition. Scarce. £60 - £80



\*Sikhote-Alin Mountains, Primorye, 12th February 1947. Purchased Siberia 2008. The Sikhote-Alin meteorite fell during daylight at 10:38 am. local time on 12th February, 1947. Witnesses reported a fireball that was brighter than the sun. It came from about 15 degrees east of north and descended at an angle of 41 degrees. It left a trail of smoke and dust 20 miles long which lingered for several hours. Light and sound of the fall were observed for two hundred miles around the point of impact.



502

**502 Geological Large Slice of Seymchan Meteorite.** A polished section slice of the meteorite, discovered in 1967; the cut surfaces showing the distinctive crystallization; with the exterior surface showing the full perimeter of the slice. (Similar to one sold in our previous auction September 2010, lot 775; but a better example with more crystallisation and 30% heavier). Report of geologist F. A. Mednikov (Magadan, USSR) in a letter, VIII 15, 1967 and of V. I. Zvetkov (Moscow, USSR) in a letter X 17, 1967. See also *Meteoritical Bulletin* No. 43, Moscow (1968) and database. 2.98 Kg, 57 cm. Superb condition. Very rare. £3,500 - £4,500

Magadan district, USSR. The main mass of 272.3 kg was found in June 1967 by the geologist F. A. Mednikov. Seymchan belongs to Main Group pallasites but it is considered anomalous due to its high Iridium content. Before the discovery of its pallasitic structure it had been classified as IIE anomalous coarse octahedrite. Seymchan is considered a stable and rust-resistant pallasite.

**503 Cretaceous Amber Pieces with Insects.** Cretaceous period, 145 - 65 million years BCE. A substantial D-section block of polished amber with many insect inclusions including arachnids; offered with an elliptical bulb of the same material. 53 grams total, 41-60 mm. Superb condition. £200 - £300



503



504

504 **Bronze Age Coiled Gold Torc.** Circa 2,000-500 BC. An annular decoration formed as a c-shaped coil of three thick gold lentoid-section rods, narrowing at each end to a single fillet with hooked terminal for closure. Gold, 45 grams, 113 mm. Extremely fine condition, complete.

£4,000 - £6,000

*Found Eastern Europe.*

505 **Bronze Age Mesopotamian Gold Dress Pin.** Circa 2,000 BC. A dress or hair pin comprising a rounded shaft, attached to a large hollow ovoid head decorated with repoussé bosses and granulation; the upper shaft bound with a wire spiral. Gold, 11.11 grams, 101 mm. Very fine condition, some minor distortion.

£650 - £850

*Ex Ancient and Orient, with printed document showing a sale price of £950.*



505



506

506 **Bronze Age Copper Flat Axe.** Circa 1,800 BC. A plain, cast flat copper axe from the earliest period of metalworking in western Europe. See Evans, J. *Ancient Bronze Implements Weapons and Ornaments of Great Britain and Ireland*, 1881, fig. 1, etc. and Nicholson, S. M. *Catalogue of the Prehistoric Metalwork in Merseyside County Museums*, no. 188. 85 grams, 100 mm. Very fine condition. £120 - £180

Found Bungay, Norfolk, England 1987.



507

507 **Bronze Age Bronze Palstave Axe.** Circa 2,000 BC. A cast palstave axe of typical form, with wide blade. Cf. Evans; cf. NMWBAC fig. 22. 460 grams, 166 mm. Fine condition and stable, with some minor loss to edges. £180 - £240

Found Lakenheath, Norfolk, England 1987.



508

508 **Bronze Age Bronze Palstave Axe.** Circa 1,000-500 BC. A cast bronze palstave with flared cutting edge and thick flanged mount. Moore, C.N. & Rowlands, M. *Bronze Age Metalwork in Salisbury Museum*, no.31. 265 grams, 131 mm. Extremely fine condition with a smooth patination, minor scuffs. Rare. £600 - £800

Found Bedfordshire, England.



509

509 **Bronze Age Bronze Decorated Socketted Axe.** Circa 1,200-800 BC. A 'Maure' type socketted axe (which entered Britain at the end of the Late Bronze Age), with a convex cutting edge but no side loop, each face decorated with five raised lines. See Evans, J. *Bronze Age Implements; Lord McAlpine Antiquities from Europe and the Near East*, p.104. 175 grams, 83 mm. Very fine condition. £100 - £150

From an old English collection, found UK.



510

510 **Bronze Age Looped and Socketted Axe.** Circa 1,000-500 BC. A cast bronze socketted axehead with securing loop; the socket's mouth decorated with raised chevron designs. 95 grams, 67 mm. Very fine condition, some chipping to the blade. £90 - £120

Found continental Europe.





511

**511 Bronze Age Ewart Park Type Sword.** Circa 700-500 BC. A cast bronze sword of 'Ewart Park' type, with raised flanges on the everted hilt and a series of perforations to accommodate the organic components; the blade is decorated with an incised linear border; the ricasso rounded; the blade with prominent central ridge. See Moore, C.N. and Rowlands, M. *Bronze Age Metalwork in Salisbury Museum*, plate XIV for a similar example; see Evans, J. *The Ancient Bronze Implements Weapons and Ornaments of Great Britain and Ireland*, pp. 273-288 for a number of similar examples and for discussion. 1.03 Kg, 67.5 cm. Extremely fine condition; tiny loss to tip of blade.

£1,200 - £1,800

*Found near Ely, Cambridgeshire, England 1977.*

**512 Bronze Age Dagger.** Circa 1,000-500 BC. A cast dagger with parallel sides and gentle curvature to the blade; the upper section pierced twice to accept rivets for a (wooden or bone) hilt; the edges grooved. Moore, C.N. & Rowlands, M. *Bronze Age Metalwork in Salisbury Museum*, no.H1. 110 grams, 193 mm. Extremely fine condition, edges complete, mostly with a smooth even patination.

£800 - £1,200

*Found Bedfordshire, England. Similar to the dagger found in the Bronze Age barrow at Ablington, Wiltshire.*



512



513

513 **Bronze Age Sickle.** Circa 1,000 BC. A cast bronze lanceolate sickle blade with ribbed detail on upper surface, plain reverse; a fixing peg formed from the casting sprue at the broad end. 43 grams, 136 mm. Fine condition. £70 - £100

*From an old English collection, found continental Europe; remains of old museum catalogue number in white.*



514

514 **Bronze Age Halstatt Brooch.** Circa 8th-5th century BC. A developed form of bronze bow brooch consisting of a round-section bow with seven biconical bulbs; the pin developing from a single spiral spring; the catchplate flat and u-shaped with a bulbous finial. See Hattatt, R. *Brooches of Antiquity*. 85 grams, 122 mm. Very fine condition, complete. £220 - £340

*Found continental Europe.*

515 **Bronze Age Urartian Openwork Casket Plate.** Circa 1,300-700 BC. A cast openwork escutcheon representing two winged stags advancing upon a central tree above a crescent of engraved floral motifs; a rectangular slot placed centrally below the tree. 70 grams, 94 mm. Very fine condition. £120 - £180

*From an old English collection.*



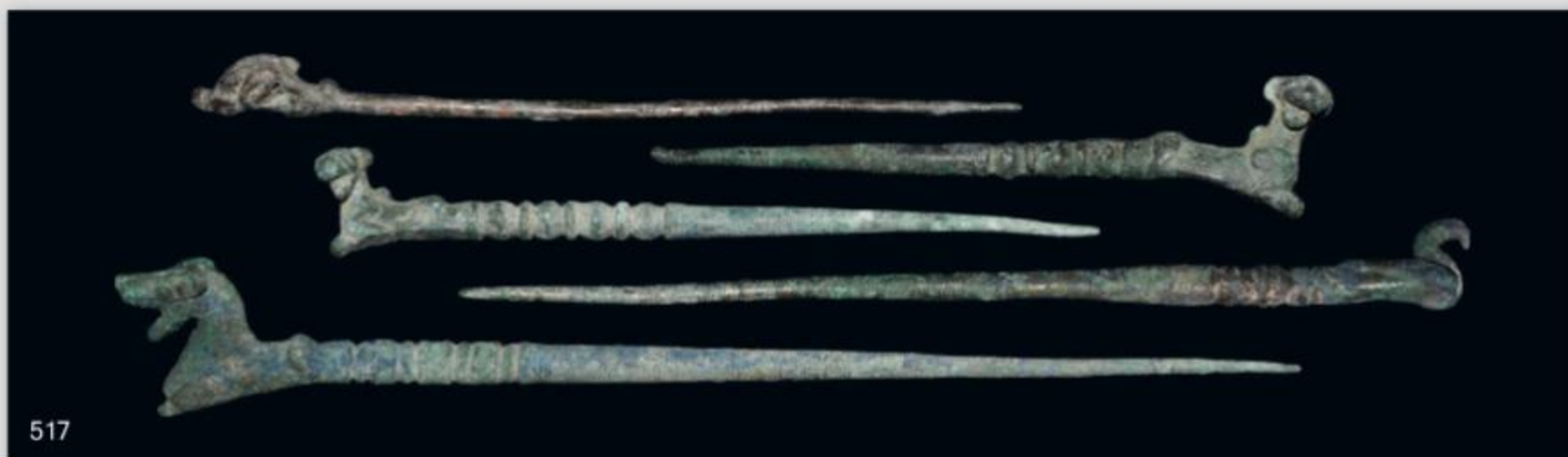
515

516 **Bronze Age Amorite Man and Camel Statuette.** Circa 2,100-2,000 century BC. A cast bronze figurine of a man in congress with a camel, gripping its rump with his hands. 70 grams, 74 mm. Very fine condition, complete. Extremely rare. £1,400 - £1,800

*From an old English collection.*



516



517



518

**517 Bronze Age Luristan Zoomorphic Pins.** Circa 1,250-650 BC. A mixed group of cast bronze ribbed pins with zoomorphic terminals: one bird with folded wings; three reclining quadrupeds with open jaws (lions?); one animal-head with globular snout and recurved ears and horns (the shaft without ribs). 120 grams total, 110-193 mm. Very fine condition. [5] £260 - £340

*From an old English collection.*

**518 Bronze Age Luristan Zoomorphic Pins.** Circa 1,250-650 BC. A mixed group of cast bronze pins with zoomorphic terminals above a ribbed section; two waterfowl with folded wings; one recumbent quadruped with open jaws (lion?); one beast-head with protrusive eyes, bulbous muzzle and recurved ears (horse?); one

beast-head with sleek profile and straight horns (ibex?). 134 grams total, 140-182 mm. Very fine condition, complete. [5] £260 - £340

*From an old English collection.*

**519 Bronze Age Luristan Ibex Horse Bit.** Circa 1,250-650 BC. A cast bronze horse bit assemblage comprising a cast bar and two strap-junctions; the bar round in section, with narrowing ends scrolled in opposing directions; the junction plates cast in openwork in the form of a central tree with circular aperture beneath the branches and a pair of opposed rampant ibex outside, standing on a solid base. 245 grams, 75 mm height of plates. Very fine condition, complete.

£500 - £800

*From an old English collection.*



519



520

**520 Bronze Age Luristan Farmer Figural Mount.** Circa 1,250-650 BC. A fabricated cast bronze mount comprising a round-section basal ring, a bovine advancing with its head turned inwards and a human male advancing in the opposite direction, dressed in a long robe and supporting a basket in his left hand, while grasping the rim with his right hand; the man is probably sowing seeds from the basket by the 'broadcast' method. 305 grams, 88 mm external diameter. Very fine condition. £400 - £600

*Property of a gentleman.*



521

**521 Bronze Age Luristan Mace Head.** Circa 1,250-650 BC. A cast tube with everted rim at the lower end; narrow ribbed collars at both ends, expanding to a thick ridged bulb. 355 grams, 105 mm. Very fine condition, complete. £160 - £240

*From an old English collection.*



522

**522 Bronze Age Luristan Mounts.** Circa 1,250-650 BC. A mixed group of bronze castings comprising a pierced cuboid mount with horse-head decoration modelled in the round; a pierced cuboid mount with bird-head decoration; an openwork strap-fitting in the form of a dolphin; a cast plate brooch in the form of a goat, with ring-and-dot decoration on the flanks. 67 grams total, 17-52 mm. Very fine condition, complete. [4] £300 - £400

*Ex a deceased estate.*



523

**523 Bronze Age Neo-Elamite Silver Decorative Pin.** Circa 600-500 BC. A round-section silver dress or hair pin topped with a quadrangular block, each face with a protruding knob; surmounted by a duck or waterfowl modelled in the round. Silver, 13.98 grams, 116 mm. Very fine condition, complete. £260 - £300

*From an old English collection.*

**524 Bronze Age Parthian Horse-Head Comb.** Circa 700-300 BC. A cast sub-triangular comb with rounded profile; the teeth cast with flat section; the body ornamented with ring-and-dot motifs; surmounted by a horse-head handle modelled in the round, with erect mane. 60 grams, 90 mm. Very fine condition, complete. £300 - £400

*From an old English collection.*



524



525

525 **Bronze Age Persian Elamite Warrior Figure.** Circa 600-500 BC. Of flat cast form in low almost bas relief style, the face strongly featured with square-cut beard, wearing a conical cap/helm and full length skirt with ornamented hem and cross-straps across the shoulders, the right hand gripping the hilt of his sword, thrust into his wide, multi-strand belt. See The Louvre, Paris, AO 19909 for a

bas relief depicting Elam warrior prisoners in almost identical attire from the palace of Ashurbanipal and dating to circa 645 BC. 500 grams, 20 cm high including stand. Extremely fine condition. Excessively rare. £4,500 - £6,000

*Ex Sotheby's, New York.*



526

526 **Bronze Age Elamite Zoomorphic Hone.** 600-400 BC. A round-section stone hone mounted under a cast bronze beast-head with D-shaped ears, prominent eyes, bulbous cheeks and muzzle; behind the head a segmented collar. 105 grams, 148 mm. Very fine condition. £300 - £400

*Property of a Gentleman.*

527 **Bronze Age Stone Geometric Seal.** Circa 2,000-1,500 BC. An elliptical-sectioned seal carved on one face with a design of bosses and vegetation; pierced longitudinally for suspension. Collon, D. *Near Eastern Seals*. 35 grams, 49 mm. Very fine condition, slight rubbing to upper edge. £60 - £90

*Ex Johnstone collection (d.), formed in the 1930's.*

528 **Bronze Age Minoan Bull Leaping Figural Seal.** Circa 1,400-1,300 BC. A pierced stone plano-convex seal depicting a recumbent bull on a grassy baseline, above its back a somersaulting human figure. 25 grams, 38 mm. Very fine condition, complete. £70 - £100

*Ex Johnstone collection d., formed in the 1930's. Bull-leaping formed part of the religious observances of many Mediterranean and eastern cults, including the Minoans, Hittites, Bactrians and others. The present item is of Type III: the acrobat in mid-air over the bull's back, facing in the same direction as the animal.*

529 **Bronze Age Minoan Winged Horse Seal.** Circa 1400-1300 BC. An elliptical-section stone seal, pierced longitudinally, with segmented border, bearing the motif of a winged horse advancing. 17 grams, 37 mm. Extremely fine condition, crisp. £100 - £150

*Ex Johnstone collection (d.), formed in the 1930's.*

530 **Bronze Age Minoan Ibex Seal.** Circa 1,400-1,300 BC. A pierced discoid jet(?) seal, plain and convex on the reverse; the obverse bearing the design of an ibex collapsing, its forelegs folded and its head thrown back; below, a pelleted band and above, a star and crescent moon. 8.00 grams, 33 mm. Very fine condition. £60 - £90

*Ex Johnstone collection (d.), formed in the 1930's.*

531 **Bronze Age Persian Faience Stamp Seals.** Circa 600-500 BC. A group of one pyramidal and five conical seals, pierced for suspension, with geometric matrix designs: three basketwork; one meander; one concentric circles; one radiating crescents. 57 grams, 28-33 mm. Very fine condition. [6] £180 - £240

*Ex Hargreave collection, collected in the 1950's and 1960's.*



527



528



529



530



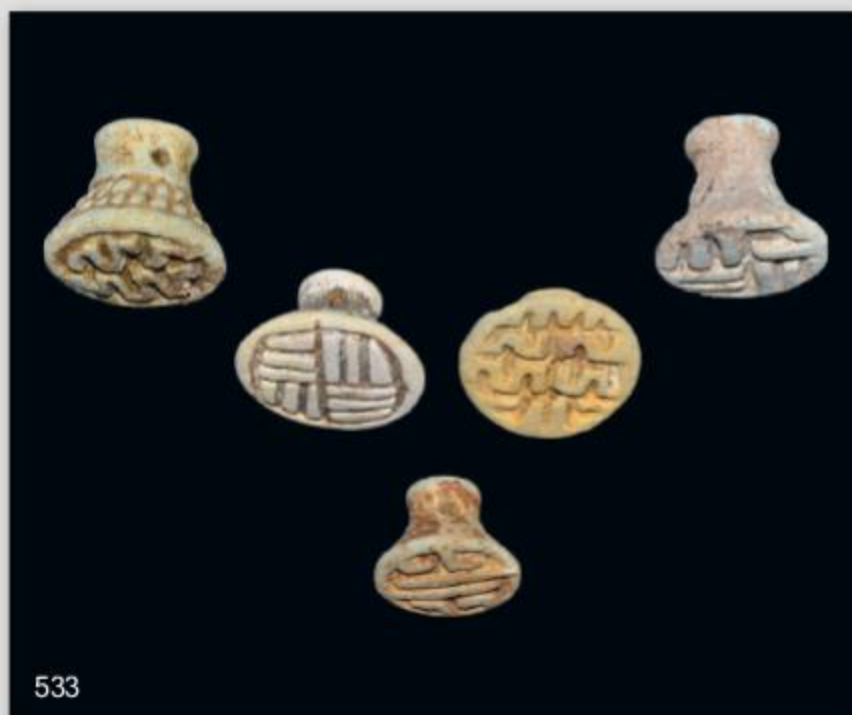
531



532

**532 Bronze Age Persian Faience Stamp Seals.** Circa 600-500 BC. A mixed group of conical seals, pierced for suspension, with geometric designs on the matrix: meander, concentric crosses, spirals, serpent within segments, ring-and-dots, basketwork. 57 grams, 13-22 mm. Very fine condition. [6] £180 - £240

*Ex Hargreave collection, collected in the 1950's and 1960's.*



533

**533 Bronze Age Persian Faience Stamp Seals.** 600-500 BC. A mixed group of five conical seals, pierced for suspension, with geometric designs on the matrix: two basketwork and three meander. 59 grams, 26-33 mm. Very fine condition. [5] £180 - £240

*Ex Hargreave collection, collected in the 1950's and 1960's.*



534

**534 Bronze Age Phoenician Ceramic Bowl.** Circa 3,200 - 2,200 BC, Early Bronze Age Period. A large pottery bowl with a globular shaped body, decorated with chevron ornament impressed around the rim. See Amiran, R. *Ancient Pottery of the Holy Land*. 925 grams, 21 cm across. Very fine condition. £120 - £180

*From an old English collection, found in the Holy Land in the 1930's.*

**535 Bronze Age Phoenician Ceramic Storage Jar with Pie Crust Handles.** Circa 3,200-2,200 BC. A large pottery storage vessel with a globular-shaped body decorated around the neck with two lines of chevron ornament, two pie-crust handles protruding from the body. See Amiran, R. *Ancient Pottery of the Holy Land*. 975 grams, 22 cm high. Fine condition. £120 - £180

*From an old English collection, found in the Holy Land in the 1930's.*

**536 Bronze Age Phoenician Ceramic Storage Jar.** Circa 3,200-2,200 BC. A large pottery storage vessel with a globular-shaped body and two handles protruding from the neck. See Amiran, R. *Ancient Pottery of the Holy Land*. 800 grams, 19 cm high. Very fine condition. £120 - £180

*From an old English collection, found in the Holy Land in the 1930's.*



535



536



537

**537 Bronze Age Persian Crimson Terracotta Rhyton.** Circa 1,000 BC. A large horn-shaped vessel with long, curving spout; the terminal in the form of a wolf's head with moulded facial details and snarling mouth. 1.08 Kg, 43 cm. Very fine condition, the rim possibly restored.

£400 - £600

*Purchased from a London auction house in the 1970's.*

**538 Bronze Age Cypro-Archaic I Bichrome Ware Amphora.** Circa 750-600 BC. The vessel's body with encircling black bands; two encircling bands within the neck and to the rim; a zone of concentric ring-and-dot motifs on the shoulder with bands of colour below; the two handles linking rim to body and decorated with zigzag ornament. 7.3 Kg, 39.5 cm high. Very fine condition.

£2,500 - £3,500

*Ex Tahsin Collection, formed in the 1960s.*



538





539



540



541

539 **Celtic European Gold Bracelet.** Circa 1st century BC-1st century AD. A narrow gold bracelet, circular in section; c-shaped in plan with clubbed terminals. Gold, 34.42 grams, 80 mm. Extremely fine condition. £2,000 - £3,000

*From an old European collection. Gold torcs and bracelets are believed to have had religious significance in the Iron Age, serving to attract the attention of the gods to the officiant in devotional ceremonies.*

540 **Celtic Gold Kolben Bracelet.** Circa 4th-7th century AD. A heavy gold bracelet, circular in section; c-shaped in plan with clubbed terminals; a slight thickening of the band opposite the opening. See Menghin, W. *The Merovingian Period: Europe Without Borders*, item 0.4.4. Gold, 175 grams, 93 mm. Cleaned and in extremely fine condition. £4,200 - £4,800

*From an old English collection formed in the 1970's. The clubbed terminals serve to strengthen the exposed ends of the rod and to prevent the bracelet from slipping or rotating on the wearer's wrist. Likewise, the thickened rear section helps the bracelet to grip.*

541 **Celtic Gold Kolben Bracelet.** Circa 4th-7th century AD. A heavy gold bracelet, circular in section; c-shaped in plan with clubbed terminals; slight thickening of the band opposite the opening. See Menghin, W. *The Merovingian Period: Europe Without Borders*, item 0.4.4. Gold, 140 grams, 79 mm. Cleaned and in extremely fine condition. £3,200 - £3,800

*From an old English collection formed in the 1970's. Heavy gold adornments worn prominently on the head, arms and upper body formed part of the customary display of status and wealth across barbarian Europe from the Bronze Age up to medieval times.*



542

542 **Celtic Gold Hair Ring.** Circa 1st century BC. A hollow cast penannular tube with ribbed exterior detailing, used as a decorative accessory for the hair. Gold, 4.86 grams, 33 mm. Very fine condition. £300 - £400

*Found in Oxfordshire, England 1977. Adornment of the hair was very significant in early Europe, and many tribal groups (e.g. the Suevi and Chatti) were noted by Roman authors such as Tacitus for their distinctive hairstyles.*



543

**543 Celtic Twisted Silver Bracelet.** Circa 2nd century BC-1st century AD. A twisted wire bracelet formed from a single round-section strand with looped ends and tight spiral binding. Silver, 22.2 grams, 70 mm. Very fine condition, complete. £200 - £300

*Purchased from a private Continental European collection in 1975.*



544

**544 Celtic European Silver Twisted Wire Bracelet.** Circa 1st century BC-1st century AD. A fine silver bracelet, formed from a single length of wire, spirally twisted and with looped terminals; one bent to form a fastening hook. Silver, 12.5 grams, 105 mm. Very fine condition. Rare. £140 - £220

*From an old European collection.*

**545 Celtic Silver Repoussé Plaque.** Circa 1st century BC - 1st century AD. A silver plate with repoussé decoration displaying a robed female figure standing within the frame of a fanum or small temple with her right hand resting on an altar; a calf by her left foot; the temple surrounded by radiating triangular leaves, with crescent leaves to both sides and above; mounted in glazed frame for display. See: Ross, A. *Pagan Celtic Britain*. Silver, 15.5 cm high. Extremely fine condition. £400 - £600

*Ex Wild collection, France. The figure has been identified as the goddess Verbeia, a northern British river deity associated with cattle, whose cult was prominent in the valley of the River Wharfe into Roman times.*



545



546

**546 Celtic Bronze One-Piece Brooches.** Circa 1st century BC. A bronze bow brooch of Glastonbury Type comprising a single rod forming the pin, spring, D-section bow, catchplate and recurved plate with three ribs; offered with a 3rd century BC La Tène Type I bow brooch formed from a single rod for the pin, spring, thick round-section bow and recurved plate with ribbed detailing and bulbous expansion. Hattatt, R. *Brooches of Antiquity*, p.18-9. 5.84 grams, 57 mm (Glastonbury Type); 27.01 grams, 60 mm (La Tène). Very fine condition, complete. [2] £100 - £150

*Ex Aston collection.*



547

**547 Celtic Bronze Votive Figure.** Circa 2nd-1st century BC. A bronze figurine of a naked male standing with arms at his sides; the posture stiff, the face clean-shaven and the hair long. 52 grams, 68 mm. Very fine condition, lower legs lost in antiquity. £100 - £150

*Found in the Danube region.*

**548 Celtic Bronze Bull's Head Finial.** Circa 1st century BC - 1st century AD. A cast staff finial comprising a tubular shaft developing into three round-section projections for the muzzle and horns; the facial details suggested by lobed flanges; the shaft pierced laterally to accept a fixing rivet. 75 grams, 62 mm. Very fine condition. £100 - £150

*Ex Hurst collection.*

**549 Celtic Bronze Bull Bowl Mount.** Circa 1st century BC-1st century AD. A hanging bowl mount in the shape of a bull's head with pronounced nostrils and curved horns. Cf. Ross, *Pagan Celtic Britain*, London, 1967; Green, M.J. *The Gods of Roman Britain*, Princes Risborough, 2003, p.8ff; Kruta, V. *Celts: History and Civilization*, London, 2004 p.154-45. 15 grams, 43 mm. Fine condition. £100 - £150

*Found Ludford, Lincolnshire, England 1983.*



548



549



550

**550 Celtic Enamelled Bronze Strap Junction.** Circa 1st century BC-1st century AD. A large, well-preserved strap junction probably from a chariot, with the remains of red and blue enamel in three cells. 45 grams, 58 mm. Very fine condition with a smooth, silky patination. £400 - £600

*Found Snettisham, Norfolk, England 1978.*

**551 Celtic La Tène Sword and Scabbard.** Circa 3rd-2nd century BC. A Continental La Tène type sword fixed in its sheet-iron scabbard; the tang square-section and slender with domed closure at the top; the u-shaped crossguard with flared ends echoing the shape of the locket; the scabbard formed around the lentoid-section blade, with two cross-straps on the outer face; emerging from the corners of the locket, two gently curved straps evolving into coiled bosses; four smaller pairs of coiled round bosses emerging from the side-bars; the chape D-shaped in plan; on the reverse a rivetted suspension bracket. 1.33 Kg, 106 cm. Very fine condition. £2,800 - £3,500

*Ex Grange collection. The organic components of the hilt have not survived. The Celtic long-sword was a slashing weapon, with a heavy, parallel-sided blade. The great length suggests that the weapon would have been used from horseback.*

**552 Celtic Iron Age Iron Flat Axe.** Circa 400-300 BC. An iron flat axe with flared, crescent-edge blade. 55 grams, 91 mm. Fine condition. £20 - £40

*Found Cambridgeshire, England 1982.*



551



553



554



555



556

**553 Celtic Gallo-Roman Rhenish Decorated Redware Beaker.** 1st-2nd century AD. A hatch decorated Gallo-Roman beaker with tapering body, small foot and wide mouth. 115 grams, 93 mm high. Very fine condition, undamaged. £160 - £200

*From the collection of Von Hohenzollern formed from the 17th-19th centuries at the castles of Sigmaringen, Glatt, Achberg, Halgerlock, the Jagdschloss Lindich in Hechingen and the Villa Eugenia.*

**554 Celtic Gallo-Roman Rhenish Redware Beaker.** 1st-2nd century AD. A hatch and floral decorated Gallo-Roman redware beaker with tapering body, small foot and wide mouth. 115 grams, 98 mm high. Very fine condition, undamaged. £260 - £300

*From the collection of Von Hohenzollern formed from the 17th-19th centuries at the castles of Sigmaringen, Glatt, Achberg, Halgerlock, the Jagdschloss Lindich in Hechingen and the Villa Eugenia.*

**555 Celtic Gallo-Roman Rhenish Black Ware Beaker.** Circa 1st-2nd century AD. A blackware Gallo-Roman beaker with tapering body, small foot and wide mouth; with a label dating the purchase to 1695 AD. 65 grams, 124 mm high. Very fine condition, undamaged. £500 - £700

*From the collection of Von Hohenzollern formed in the 17th-19th centuries at the castles of Sigmaringen, Glatt, Achberg, Halgerlock, the Jagdschloss Lindich in Hechingen and the Villa Eugenia. Accompanied by an old certificate of authenticity from a London dealer in ancient art.*

**556 Celtic Gallo-Roman Rhenish Blackware Cup.** 1st century AD. A blackware Gallo-Roman cup with tapering body, small foot, wide mouth and two handles. 215 grams, 112 high mm. Very fine condition, undamaged. £220 - £280

*From the collection of Von Hohenzollern formed in the 17th-19th centuries at the castles of Sigmaringen, Glatt, Achberg, Halgerlock, the Jagdschloss Lindich in Hechingen and the Villa Eugenia.*



557 **Celtic Glass Polychrome Bead Necklace.** Circa 1st century BC-1st century AD. An assemblage of 76 glass beads in dark yellow fabric with white and dark blue paired-eye motifs. See Dubin. L.S. *The History of Beads from 30.000 BC to the Present*. 70 grams, 8-18 mm external diameter. Very fine condition, restrung. Rare. £1,200 - £1,800

*From an old English collection. Found Serbia, Eastern Europe, 1926. 'Eye' motif beads were widely held to have amuletic properties in the ancient world.*



558 **Viking Twisted Gold Torc.** 9th-11th century AD. A penannular neck-ring formed from a square-section bar, twisted about its own axis to produce a spiral effect; the terminals round-section and tapering. Gold, 205 grams, 190 mm external diameter. Extremely fine condition, some slight wear. £6,000 - £8,000

*Ex Hurst collection. Torcs or neck-rings, arm-rings and bracelets fashioned from gold are an ancient tradition in northern Europe, used to display both wealth*

*and status. The torc was especially prized since it could be used as a prominent and highly visible means of displaying religious affiliation to the god of magic and warfare, Oðinn (Odin), who features in a myth where he sacrifices himself by hanging in order to gain access to the power of the runic script and the magic it contains. Devotees of the god, who included many of the leading kings, earls and chief warriors of Scandinavia, used the symbolism of the twisted torc as an emblem of the noose and thus of access to the god's powers of inspiration and knowledge of esoteric wisdom.*



559



560



559 **Anglo-Saxon Gold Cloisonné Ring.** 6th-7th century AD. A gold finger ring comprising a flat-section hoop with filigree decoration outside; on the shoulders, hollow hemispheres with granule points; the bezel an expanding tubular cell with filigree decoration at the base; within the cell a garnet set en cloison. See Menghin, W. *The Merovingian Period. Europe Without Borders*. Gold, 3.01 grams, 23 mm overall. (Approximate size UK Q½, USA 8½, Europe 18.62, Japan 18). Extremely fine condition, complete. £550 - £750

*From an old European collection.*

560 **Frankish Gold Garnet Cloison Ring.** 6th-7th century AD. A Merovingian finger ring comprising a gold hoop formed from a pelleted band with wire borders and granule triangles on the shoulders; the bezel an expanding cell with granule triangles, containing an annular garnet with a central gold stud. Oman, CC. *Victoria and Albert Museum Catalogue of Rings*, 1930, plate IX items, 235, 240. Gold, 2.89 grams, 22.63 mm overall. (Approximate size UK Q, USA 8, Europe 17.15, Japan 16). Very fine condition, complete. £400 - £600

*From an old European collection.*

561 **Viking Gold Scutiform Ring.** 9th-11th century AD. A substantial gold finger ring with lozengiform bezel developing from the hoop, formed from a single cast bar; the narrow ends of the bar twisted over each other; the hoop decorated with sub-triangular and pellet-in-triangle punchmarks; the bezel formed with a central boss surrounded by subtriangular and chevron punchmarks. Gold, 17.53 grams, 26 mm external (approximate size UK: Y, USA: 12; Europe: 27.51; Japan: 26). Extremely fine condition. Extremely rare. £4,500 - £6,000

*Ex Stark collection.*

562 **Viking Gold Punch Decorated Ring.** 9th-11th century AD. A sturdy Viking period finger ring decorated with offset pellet-in-triangle punchmarks within borders of pellets. Gold, 24.80 grams, 27 mm external (approximate size UK Y, USA 12, Europe 27.51, Japan 26). Very fine condition. Rare. £2,200 - £2,800

*Ex Stark collection.*

563 **Viking Twisted Gold Ring.** 9th-11th century AD. A c-plan finger ring formed from two expanding round-section rods twisted together. Gold, 4.95 grams, 23 mm external. (Approximate size UK O, USA 7, Europe 14.98, Japan 14). Extremely fine condition, complete. £800 - £1,200

*Ex Bury collection.*

564 **Viking Gold Plaited Ring.** 9th-11th century AD. A large Viking period gold finger ring formed from four expanding strands, plaited into a chain; the ends hammered and drawn out to fine rods, twisted around each other. Gold, 15.74 grams, 30 mm external (Approximate size UK X½; USA 11¼; Europe 26.92; Japan 26). Extremely fine condition. Rare. £2,600 - £3,000

*Ex Stark collection.*



561



562



563



564







**565 Saxon Gold Pendants and a Strip Fragment.** 6th-7th century AD. A scutiform pendant comprising a foil sheet with central cabochon garnet and incised ornamental suspension loop; a garnet set en cabochon in a gold filigree and granulation mount; a gold foil collar and suspension loop, with an empty cabochon setting on one face; a tongue-shaped mount fragment with filigree and ropework decoration. See Menghin, W. *The Merovingian Period. Europe Without Borders* and Carver, M. *Sutton Hoo. A Seventh Century Princely Burial Ground in Context. Gold and garnet*, 7.11 grams, 22 mm largest item. Very fine condition. [4] £400 - £600

*Ex Old continental collection formed in the 1960's. The use of garnet and gold jewellery is typical of the later 6th and early 7th century in England, typical of famous high-status sites such as Sutton Hoo, Taplow and the recent Staffordshire Hoard find.*



**566 Viking Natural Gold Crystal in Quartz from a Grave.** Circa 9th century AD. A naturally occurring gold crystal formed in a quartz matrix. 25.73 grams total, 33 mm. Superb condition. £4,000 - £5,000

*Found in Estonia, curated by a Rus merchant on the River Volga and interred with him. Crystalline gold is a rare allomorphic variant of the metal, which normally occurs in nuggets. It is found in Russia.*

**567 Viking Twisted Silver Torc.** 9th-11th century AD. A heavy silver torc comprising four square-section rods; c-shaped in plan with sharply narrowing terminals; the body formed with twists in opposing directions, emanating from the central flat section decorated with punched pellet-in-triangle motifs on three surfaces. See Hårdh, B. *Silver in the Viking Age: A Regional-Economic Study*. Silver, 230 grams, 162 mm. Extremely fine condition. Rare. £1,800 - £2,400

*Ex Slack collection.*





568 **Viking Twisted Silver Torc.** 9th-11th century AD. A heavy silver torc comprising four square-section rods; c-shaped in plan with gently narrowing terminals; the body formed with twists in opposing directions, emanating from the central flat section decorated with punched pellet-in-triangle motifs on three surfaces. See Hårdh, B. *Silver in the Viking Age: A Regional-Economic Study*. Silver, 375 grams, 177 mm. Extremely fine condition. Rare. £2,200 - £2,800

*Ex Stark collection.*

569 **Viking Silver Ornamented Bracelet.** 9th-11th century AD. A Viking period silver bracelet, cast as a D-section bar; c-shaped in plan; the surface ornamented with borders of offset triangle punchmarks with opposed triangle ('bowtie') punchmarks in a medial band; the ends narrow and rounded. See Hårdh, B. *Silver in the Viking Age: A Regional-Economic Study*. Silver, 33.5 grams, 71 mm. Extremely fine condition. £600 - £900

*Ex Stark collection.*

570 **Viking Silver Ornamented Bracelet.** 9th-11th century AD. A Viking period silver bracelet, cast as a flat-section bar; c-shaped in plan; the surface ornamented with borders of triangle punchmarks and a medial band of pellet-in-triangle punchmarks; the ends narrow, squared and slightly thickened. See Hårdh, B. *Silver in the Viking Age: A Regional-Economic Study*. Silver, 32.4 grams, 76 mm. Extremely fine condition. £600 - £900

*Ex Stark collection.*





**571 Viking Silver Faux Twist Ring.** 9th-11th century AD. A c-shaped finger ring formed as a cast rod with pointed terminals, the body provided with a false twist effect; the ends overlapped. Silver, 1.36 grams, 21 mm external diameter. (Approximate size UK K½, USA 5½, Europe 10.27, Japan 10). Very fine condition, complete. £160 - £200

*The twisted effect is in imitation of Viking period twisted-wire finger rings.*

**572 Pair of Merovingian Frankish Silver Gilt Brooches.** 6th-7th century AD. A pair of Merovingian Frankish bow brooches with animal-head terminals; the headplate rectangular with scrolled upper edge, bearing stylized zoomorphic designs within a raised silver border with triangular nielloed punchmarks; the bow shallow, with three plain ribs and two hatched gilded panels; the footplate convex bearing zoomorphic motifs within a similar border, the finial formed as an animal mask with lentoid eyes, the border decoration continued onto its brow and muzzle; on the reverse, the pin-lugs and catchplate complete. See Menghin, W. *The Merovingian Period. Europe Without Borders*. Silver-gilt, 38.9 grams total, 80 mm each. Very fine condition, pins lost in antiquity. [2] £1,400 - £1,800

*From an old English collection. The scrolled detail on the headplate evolved from the more usual radiating knobs of this brooch-type.*



**573 Avar Silver Horse Brooch.** Circa 4th-7th century AD. A plate brooch in the form of a stylized horse, galloping and with its mouth open; a large ring-and-dot motif to the shoulder, and a line of smaller variants from the eye to the rear fetlock; the pin-lug and catchplate complete on the reverse. See Hattatt, R. *Ancient & Romano-British Brooches*. Silver, 6.58 grams, 33 mm. Very fine condition. £220 - £280

*From an old English collection.*

**574 Saxon Silver Ring and Bronze Buckle.** 5th century AD. A broad belt buckle comprising a folded plate with openwork rear edge and Late Roman Military Style punched-point vinescroll decoration, secured with three rivets; the loop segmented with animal-mask detailing on the couch; the tongue flat with serpent-head finial and incised saltire; offered with a 8th-9th century segmented ring with ropework decoration around the circumference. Oman, C.C. *Victoria and Albert Museum Catalogue of Rings*, 1930, item 227; Marzinzik, S. *Early Anglo-Saxon Belt Buckles (late 5th to early 8th centuries) Their Classification and Context*, plate 75 (Alfriston, Droxford). Silver (ring), 2.15 grams, 21 mm external (approximate size UK Q½, USA 8½, Europe 18.12, Japan 17); buckle 18.2 grams, 44 mm. Very fine condition, complete. £120 - £180

*Ex Aston collection.*



**575 Merovingian Frankish Silver-Gilt Buckle Tongue.** 5th-7th century AD. The tongue from a large Merovingian belt-buckle formed as a hollow triangular-section bar with two square gilded panels on the upper end, each with a chip-carved saltire; the lower end curved to accommodate the forward edge of the buckle's loop, decorated with trapezoidal panels bearing a chip-carved double-scroll motif; traces of the attachment staple beneath. See Menghin W. *The Merovingian Period. Europe Without Borders*. Silver-gilt, 22.2 grams, 51 mm. Extremely fine condition. £300 - £500

*From an old European collection.*

576 **► Viking Hack and Melted Silver.** 9th-10th century AD. A group of four silver pieces: three molten nodules and a hacked ingot. See Hårdh, B. *Silver in the Viking Age*. Silver, 23 grams, 6-20 mm. Very fine condition. [4] £120 - £180

*Found Estonia in the 1930's.*

577 **Anglo-Saxon Great Square-Headed Brooch.** 6th-7th century AD. A great square-headed brooch with rectangular headplate decorated with billeting and Style I ornament; the bow shallow and three-ribbed; the lozengiform footplate with central rib, plain side-lobes and terminal lobe; the pin-lugs and catchplate on the reverse substantially intact; the heavy surface gilding remaining in the incised areas of the design. Hines, J. *A New Corpus of Anglo-Saxon Great Square-Headed Brooches*. 65 grams, 128 mm. Very fine condition; some restoration. Rare. £300 - £500

*Ex Winter Collection. Similar in layout to the example from Faversham, Hines's plate 61(b).*

578 **Visigothic Bronze Brooch.** 5th-7th century AD. A radiate-headed bow brooch comprising a D-shaped headplate with seven radiating knobs, a ribbed bow and triangular footplate with bird-head lappets and zoomorphic openwork to the sides; the surfaces of the head- and footplate decorated with geometric ring-and-dot motifs; the iron sprung pin and catchplate largely intact on the reverse. See Menghin, W. *The Merovingian Period. Europe Without Borders*, p.571. 11 grams, 57 mm. Very fine condition. £160 - £200

*From an old English collection.*

579 **► Viking Bronze Ring-and-Crescent Pin.** Circa 10th-12th century AD. A sturdy cast bronze dress pin with disc head (fragment); a suspension loop attached below the head with a ring and crescentic pendant attached; the pendant decorated with ring-and-dot motifs; the lower edge with three attachment loops. 13 grams, 80 mm. Good fine condition. £50 - £80

*From an old English collection.*

580 **Hunnic Bronze Wolf Mount.** 4th-7th century AD. A cast openwork copper-alloy mount in the form of a stylized crouching wolf; its muzzle square with inset c-shaped mouth; its body and limbs composed from banded zones, some bearing hatching; one of two attachment lugs present on the reverse. See Menghin, W. *The Merovingian Period: Europe Without Borders*. 85 grams, 131 mm. Extremely fine condition. £300 - £500

*Ex Slack collection.*



577



578



580



**581 Viking Seven-Lobed Sword.** Circa 9th century AD. A Viking age sword comprising a slender parallel-sided blade with fuller extending most of its length; the flat-section tang narrowing towards the top; the pommel seven-lobed, with prominent median lobe; the upper guard lentoid in section with incised triangle decoration; the lower guard lentoid in section with incised borders. Blade length: 74 cm, width: 4.5 cm, consistent with a blade of Gebig's Type 1. See Pierce, I. *Swords of the Viking Age*. 615 grams, 874 mm. Very fine condition, some repair and stabilisation of the blade's edge. Rare.

£7,500 - £9,500

*Ex Grange collection. Seven-lobed sword pommels are rare in the Viking age; the form is similar to Petersen's Type O but with a more pronounced triangular profile.*

**582 Viking Iron Spearhead.** 9th-11th century AD. A forged iron Viking age spearhead of leaf-shaped profile, with flat central rib and split-socket attachment method. See Leppäaho, J. *Späteisenzeitliche Waffen aus Finland*, table 54 (1b). 325 grams, 396 mm. Very fine condition, some minor losses to the blade's edge. £180 - £240

*From an old English collection. There is no trace of a hole to accept an attachment rivet (as found on Anglo-Saxon split-socket spearheads) suggesting that it was forced onto the shaft under pressure and bound in place.*



581

582



583

**583 Anglo-Saxon Grave Assemblage - Short Sword (and Replica), Shield Boss and Axe.** 6th century AD. A grave-goods assemblage comprising: a group 1.1 shield boss with apex disc and strongly carinated profile; an axehead with square rear and expanding blade; a seax or single-edged sword blade of triangular section, gently curving to the point; offered with an accurate reproduction of the seax in forge-welded iron, with bone grip, tooled leather sheath and suspension loops. Dickinson, T. & Härke, H. *Early Anglo-Saxon Shields*. Seax: 400 grams, 510 mm; boss: 390 grams, 162 mm external diameter; axe: 630 grams, 148 mm. Stable, conserved and waxed. [5] £250 - £350

*Excavated Worcester area, 1916. The reproduction seax is based on the dimensions and composition of the original, with conjectural fittings.*

**584 Viking Iron Axehead.** 9th-10th century AD. A forged iron axehead, triangular in plan with narrow, expanding blade and winged extensions beside the socket. See Leppäaho, J. *Späteisenzeitliche Waffen aus Finland* plate 62 item 2, for a Baltic Scandinavian 'small axe' with similar profile from Kokemäki, Finland. 1.4 Kg, 239 mm. Very fine condition, complete. £220 - £300

*Ex Grange collection.*

**585 Anglo-Scandinavian Lead Weights with Inserts.** 8th-11th century AD. A pair of cast lead discoid weights with identifying insets; the smaller with a copper-alloy fragment showing triangular punched designs; the larger with a bronze fragment showing a cast starburst design. 31 grams, 21 mm diameter; 65 grams, 26 mm diameter. Very fine condition, complete. £120 - £160

*Found Yorkshire, England.*

**586 Viking Bone Hair Pin.** Circa 9th-11th century AD. A carved bone double-pin formed as one serpent swallowing another, their bodies parallel and the curve of the larger one's neck forming the suspension loop. 10 grams, 151 mm. Very fine condition, complete. £120 - £180

*Property of a Lady.*

**587 Viking Bone Pendants.** Circa 11th century AD. An elliptical pendant carved in the likeness of a bearded male face with lentoid eyes and segmented helmet; offered with a circular plaque pendant featured a carved knotwork border and central zoomorph. 54 grams, total, 77-122 mm. Very fine condition, complete. [2] £200 - £300

*Ex Mandelli collection.*



584



586



587





588



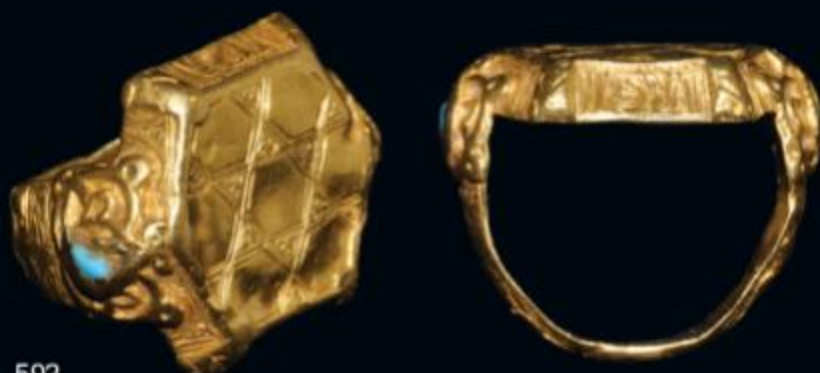
589



590



591



592

**588 Medieval Gold Serpent Heads Ring.** Circa 12th century AD. A finger ring comprising a plain D-section hoop rising to shoulders in the form of serpentine heads, facing inwards towards a plain D-shaped bulb. Gold, 2.97 grams, 23 mm overall. (Approximate size UK P½, USA 7¼, Europe 16.86, Japan 16). Very fine condition, complete and undamaged. £700 - £900

*From an old European collection.*

**589 Medieval Gold Cabochon Garnet Ring.** 12th-13th century AD. A delicate gold hoop expanding slightly at the shoulders; the bezel hemispherical in which is set en cabochon a red gemstone (possibly garnet, ruby or tourmaline). PAS: LEIC-7246EO. Gold and gemstone, 1.55 grams, 23 mm overall. (Approximate size UK O, USA 7, Europe 14.98, Japan 14). Extremely fine condition. £800 - £1,200

*Found Northhill Area, Bedfordshire 2010. Supplied with Portable Antiquities Scheme documentation and letter from the British Museum disclaiming the crown's interest in the item. The ring is very similar to examples 171.2, 172.2 and 175.2 in the Annual Treasure Report 2004, all of which are dated to the 12th to 13th centuries.*

**590 Medieval Engraved Gold Ring.** Circa 15th century AD. A finger ring formed as a flat-section hoop, decorated with dot and billet punchmarks in three rows. See Oman, C.C. *Victoria and Albert Museum Catalogue of Rings 1930*. Gold, 3.85 grams, 18 mm external. (Approximate size UK M, USA 6, Europe 12.46, Japan 12). Extremely fine condition. £220 - £280

*From an old Flemish collection.*

**591 Medieval Gold Cabochon Ruby Ring.** Circa 15th century AD. A plain finger ring comprising an expanding flat-section hoop rising to a quadrangular bezel containing a ruby set en cabochon. Gold, 2.74 grams, 26 mm overall. (Approximate size UK Q½, USA 8½, Europe 18.12, Japan 18). Good very fine condition, complete. £1,800 - £2,400

*Found on the Thames foreshore in the 1970's, recorded with the Museum of London.*

**592 Medieval Gold Hexagonal Ring.** Circa 15th century AD. A finger ring comprising an expanding D-section hoop with knotwork decoration rising to rectangular shoulders with piriform cloison settings; the bezel a hexagon with bevelled edges; on the upper face a fretwork of interlocking hexagons with trefoil details in the corners; on one face the initials RE, on the other a monogram; on the corners, raised keystone panels with scroll patterns; on the reverse of the bezel an inscribed lozenge, quartered with a dot in each quadrant. See Oman, C.C. *British Rings 800-1914*. Gold, 7.58 grams, 19 mm overall. (Approximate size UK E½, USA 2¼, Europe 3.42, Japan 3). Very fine condition, some wear to edges. £800 - £1,200

*Property of a gentleman.*

**593 Medieval Gold Amuletic Intaglio Ring.** 15th-16th century AD. A gold intaglio finger ring comprising a plain round-section hoop and inverted pyramidal bezel forming a cell; the bezel bordered with granulation; the cell containing a red gemstone set en cabochon, engraved with a pseudo-alphabetic inscription. See Oman, C.C. *Victoria and Albert Museum Catalogue of Rings 1930*, plate XXXII. Gold and gemstone, 5.13 grams, 29 mm overall. (Approximate size UK K, USA 5¼, Europe 10.27, Japan 10). Extremely fine condition, wearable. £500 - £800

*Property of a gentleman. Religious and 'magical' finger rings were desirable items during the religious turmoil of the later Middle Ages and throughout the Reformation.*



593



594

**594 Medieval Gold Ring with Roman Sapphire Intaglio.** Circa 16th century AD. A gold finger ring with plain hoop expanding to an elliptical bezel holding a Roman sapphire intaglio depicting the bust of Constantius I (250 - 306 AD), son of Constantine I, set within a cell retained by four scalloped recesses; the underside of the bezel open to display the translucence of the stone. See Oman, C.C., *Victoria and Albert Museum Catalogue of Rings 1930*, No 563. Gold, 12.39 grams, 25 mm external (Approximate size UK P, USA 7½, Europe 16.23, Japan 15). Extremely fine condition. Excessively rare. £10,000 - £15,000

*Ex Stark collection.*

**595 Medieval Renaissance Gold Filigree Pin.** Circa 15th-16th century AD. A gold dress/hair pin with a fine, narrow shaft; the head formed as a granulated dome above a tapering sleeve of granulation; from the base of the dome six projections meeting at the upper edge of the sleeve. Gold, 2.74 grams, 67 mm. Extremely fine condition. £600 - £900

*Ex Gorny & Mosch auction, Munich, December 2006 lot 632.*



595





596



597



598

**596 Medieval Silver-Gilt Saint Figural Pendant.** Circa early 16th century AD. An ecclesiastical pendant of a standing robed figure of a saint, holding a cross-headed staff and an open book; the haloed, tonsured and bearded head with a suspension loop affixed; the figure standing upon a waisted hexagonal bracket. Published *Treasure Hunting Magazine* 2008. Silver-gilt, 7.40 grams, 32 mm. Superb condition, with slight bend to shaft of staff. Extremely rare. £6,000 - £8,000

*Found Stapleton, North Yorkshire, 2007 (Treasure Act reference 2007 T70 and disclaimed); supplied with British Museum letter and report, Treasure Act receipts and other documents including independent valuations dated 2008 suggesting a potential treasure value of between £33,000 - £35,000. Supplied in a plastic box with Treasure Act label.*

**597 Medieval 'mon coeur est a vous' Silver Clasped Hands Posy Ring.** Circa 15th-16th century AD. A love ring with clasped-hands motif on the external surface between engraved branches; engraved on the internal surface in Lombardic script 'mon coeur est a vous' (my heart is yours) between starbursts. See Oman, C.C. *British Rings 800-1914*, plates 54, 57. Silver, 2.90 grams, 21 mm external. (Approximate size UK P½, USA 8, Europe 17.00, Japan 16). Very fine condition. Extremely rare. £200 - £300

*Ex Tucker collection.*

**598 Medieval Silver Double Twist Ring.** 13th-15th century AD. A finger ring formed from a square-section wire twisted along its own length, with a finer round-section twisted wire attached. Silver, 2.18 grams, 24 mm external. (Approximate size UK N, USA 6½, Europe 13.72, Japan 13). Extremely fine condition, complete. £200 - £400

*Found Lincolnshire, England, 1975.*



599 **Medieval European Silver Engraved Ring.** Circa 14th century AD. A finger ring comprising a carinated hoop expanding to a lozengeform bezel, decorated with a medial band on the shoulders between hatched zones; the bezel a lozenge with incuse borders. Oman, C.C. *Victoria and Albert Museum Catalogue of Rings*, 1930. Silver, 2.64 grams, 22 mm external. (Approximate size UK Q½, USA 8½, Europe 18.62, Japan 18). Very fine condition, complete.

£120 - £180

*From an old European collection.*



600 **Medieval Silver Engraved Two Fishes Ring.** 14th-15th century AD. A cast finger ring comprising a D-section hoop with plain bulbous panels and engraved detailing expanding to an octagonal bezel with bevelled edges, the corners provided with lobed projections; the bezel engraved with a vesica-shaped panel amid a row of annulets; the vesica bearing the motif of two fish. Silver, 11.81 grams, 23 mm overall. (Approximate size UK M½, USA 6½, Europe 13.41, Japan 13). Very fine condition, complete.

£200 - £300

*Ex Tucker collection.*



601 **Medieval Silver Engraved Ring.** 14th-15th century AD. A cast finger ring comprising a D-section hoop with plain bulbous panels and engraved detailing expanding to a square bezel with bevelled edges, the corners provided with lobed projections; the bezel engraved with concentric square panels surrounding a zoomorphic motif. Silver, 9.86 grams, 24 mm external diameter (Approximate size UK R½, USA 9, Europe 19.38, Japan 18). Very fine condition, complete.

£120 - £180

*Found Thetford, Norfolk, England, 1962; with old collection ticket.*

602 **Medieval Silver Engraved Rampant Beast Ring.** 15th-16th century AD. A broad silver hoop expanding to a circular bezel; the hoop nielloed with a vinescroll design; the bezel featuring an incised design of a rampant beast (perhaps a stag) within a nielloed vesica with opposed scroll surround. See Oman, C.C. *Victoria and Albert Museum Catalogue of Rings 1930*, item 555. Silver, 13.58 grams, 24 mm overall. (Approximate size UK W½, USA 11¼, Europe 25.97, Japan 25). Extremely fine condition.

£400 - £600

*From an old European collection.*



603 **Medieval Silver Heart Brooch.** Circa 16th century AD. An openwork frame brooch in the form of a heart surmounted by a decorative escutcheon with pelleted surround, flanked by wings; the D-section pin attached across the frame. Silver, 2.87 grams, 27 mm. Very fine condition, complete.

£90 - £120

*From an old English collection.*

604 **Medieval Silver 'Amor Vincit Omnia' Ring Brooch.** 15th-16th century AD. A delicate ring brooch comprising a flat-section band and pin; on the band the inscription in seriffed capitals 'AMORVINCITOMNIA' (love conquers all). Silver, 0.66 grams, 16 mm external diameter. Very fine condition, complete.

£200 - £300

*Found on the Thames foreshore in the 1970's, recorded with the Museum of London.*



604



605



606



607



608



609

**605 Medieval Silver Annular Brooches.** Circa 13th-14th century AD. An annular brooch with a plain carinated band, decorated with a conical collet containing white enamel; opposite the collet a human hand modelled in the round; the pin-couch with an incised saltire; the pin flat with a collar; offered with an annular brooch with four cinquefoil panels on the band; the band twisted between the panels; the pin flat with a collar. Egan, G. & Pritchard, F. *Dress Accessories, 1150-1450*. Silver, 1.45 grams, 23 mm; 1.42 grams, 18 mm. Very fine condition, complete. [2] £220 - £280

*From an old English collection, found on the Thames Foreshore in the 1970's and recorded with the Museum of London.*

**606 Medieval Silver Annular Brooches.** Circa 13th-14th century AD. A flat-section annular brooch with two conical collets containing white enamel, the frame incised with geometric pellet and zigzag detailing, the pin in the form of a miniature sword; offered with a plain round-section annular brooch, its pin decorated with a knurled bulb. Egan, G. & Pritchard, F. *Dress Accessories, 1150-1450*. Silver, 1.83 grams, 22 mm; 1.29 grams, 15mm. Very fine condition, complete. [2] £220 - £280

*From an old English collection, found on the Thames Foreshore in the 1970's and recorded with the Museum of London.*

**607 Medieval Silver Engraved Bracelet.** 14th-15th century AD. A c-shaped bracelet formed from a flat-section band with ribbed detailing, the central rib with punched billeting; the median element a floral motif; the terminals square with punched animal-mask detailing. Silver, 13.3 grams, 61 mm (maximum diameter). Very fine condition, complete. £150 - £200

*From an old European collection.*

**608 Medieval Middle Eastern Silver Floral Spoon.** Circa 14th-15th century AD. A spoon with a long, triangular-section spiked handle; the shallow bowl developing from a rectangular panel on the underside, with geometric floral decoration; on the bowl, a repoussé floral design reserved against a punched background. Silver, 25.17 grams, 221 mm. Extremely fine condition. £320 - £480

*Property of a Gentleman.*

**609 Medieval Urban IV Papal Bulla Seal.** 1261-1264 AD. A lead seal, perforated through the centre where cords once held it to the document. Obv: with VRBANVS PP IIII legend in three lines. Rev: heads of Saints Paul and Peter divided by long cross with SPA and SPE above. See Birch, W. de Gray, *Catalogue of Seals in the Department of Manuscripts in the British Museum*, Volume VI, No. 21,808 (only one example listed). Lead, 45 grams, 40 mm diameter. Very fine condition. Rare. £120 - £180

*Found Hampshire, England 1979.*



610

**610 Medieval Bronze Civic Chamberlain's Seal Matrix.** 14th century AD. A seal matrix for the city of Berwick Upon Tweed, with a truncated hexagonal column; the matrix features a six-petalled flower with a superimposed flag bearing three lions passant gardant with a bear beneath; around the design the legend + [...]IIIIEII CAMERARII VILLE [B]RVICI, interpreted as '(the seal of) the Chamberlain of the town of Berwick'; offered with a cast impression of the strike. 40 grams, 32 mm diameter. Very fine condition. Excessively rare.

£2,000 - £3,000

*Found Kirby Hill, Yorkshire, England 2007. Supplied with a printed Portable Antiquities Scheme record no. SWYOR-F8E883; a seal struck from this matrix has been identified on a document held by Durham cathedral issued by William de la Val in 1364.*



611

**611 Medieval Bronze Paschal Lamb Seal Matrix.** 14th-15th century AD. A cast seal matrix formed as an expanding octagonal column, rising to an elliptical collar beneath a pierced discoid head with quatrefoil decoration; the seal depicting a lamb and flag beneath a star, within a broad border bearing the text S[...]AGNUS DEI. Pateman, B. *Collecting Seals*. 12 grams, 25 mm overall. Very fine condition.

£120 - £150

*Found Norfolk, England 1989.*

**612 Medieval Reformation Chalice.** Circa early 16th century AD, with later alteration. A hybrid chalice created from two pre-existing elements: the lower a hexagonal-section stem expanding to a six-lobed stepped base, with an incised cross pattée on one facet; the stem encircled with a bulb bearing six pelleted discs between petals; beneath the base the engraved inscription in seriffed capitals 'SVM.I' and 'BOVILLEZ 1663'; above, attached to the stem a hemispherical silver cup with stepped, everted rim bearing the engraved date 1763 beneath a monogram comprising the initials 'CFH' beneath a (ducal?) crown. See Robinson, J. *Masterpieces. Medieval Art* p.26-7. Silver and gilt bronze, 415 grams, 165 mm. Very fine condition.

£3,000 - £4,000

*The chalice cup was customarily made from silver-gilt in order to be worthy of the Eucharist, even when the stem and base were of copper-alloy.*



612



613



615



616



617



614

**613 Medieval Gilt Bronze Processional Cross or Staff Mount.** Circa 14th century AD. An annular joint piece from the staff of a processional cross, decorated in an ecclesiastical architectural style with four main gables spaced equidistantly and superimposed on a background of arched windows. See Robinson, J. *Masterpieces: Medieval Art* p.184-5 for similar gothic-arch arcading on a casket bearing the arms of Isabella of France dating to 1303-8 AD. 42 grams, 54 mm external diameter. Extremely fine condition, with almost all the gilding present. An important piece and very rare. £160 - £240

*Found Kenilworth, Warwickshire, England 1985.*

**614 Medieval Bronze Crucifixion Bible Box Mount.** Circa 14th-15th century AD. A large cast mount believed to have been from a bible box, depicting the crucifixion with a figure either side under a gothic arch; similar to several types of pilgrim badge of the period. Cf. Mitchiner, M. *Medieval Pilgrim & Secular Badges*. 90 grams, 68 mm. Fine, complete and undamaged. £160 - £240

*Found Thames Foreshore, London 1979.*

**615 Medieval Bronze Crucifix Mount.** 11th-12th century AD. A convex mount in the form of a crucified Christ in loincloth, executed in Romanesque style; the arms outstretched, with holes to accept attachment pins; the head oversized and tilted; the feet resting on a block, pierced. 15 grams, 101 mm. Very fine condition.

£350 - £450

*Found Castle Acre, Norfolk, England 1979.*

**616 Medieval Gilt Head of Christ.** Circa 14th-15th century AD. A large gilded pewter head of Christ, for attachment to a cross. 165 grams, 88 mm. Fine with the majority of the original gilding intact. Rare. £200 - £300

*Found Walsingham, Norfolk, England.*

**617 Medieval Knights of the Holy Sepulchre Crosses.** Circa 15th-16th century AD. A bronze repoussé open-work bracteate in the form of a cross crosslet, the emblem of the Knights of the Holy Sepulchre, the attachment pin intact; plus another smaller example with the pin missing. Mitchiner, M. *Medieval Pilgrim and Secular Badges*, London, 1986 p.244 items 939-42. 3.03 grams, 31 mm without pin, smaller example 0.55 grams, 18 mm. Extremely fine condition. [2] £120 - £160

*Found Billingsgate, London, England. The Knights of the Holy Sepulchre were a crusading chivalric order founded by Godfrey de Bouillon during the First Crusade. It was active in the eastern Mediterranean from the later 11th century into the 16th century, and was granted the island of Malta by the Holy Roman Emperor, Charles V, from 1530.*



618

**618 Medieval Bronze Horse Harness Pendant.** 14th-15th century AD. A horse harness pendant comprising a lozengiform plate surrounded by eight three-band radiating extensions; the lozenge bearing a silver saltire on a blue enamel background with a voided silver cross in each quadrant, and a pellet at the centre; the suspension loop developing from the upper extension and pierced transversely. 9.24 grams, 41 mm. Very fine condition, complete.

£120 - £180

*From an old English collection.*



619

**619 Medieval Sir Geoffrey Luttrell Enamelled Heraldic Mount.** 13th-14th century AD. A very large enamelled mount bearing the arms of the Luttrell family: a bend between six martlets; around this a decorative surround of vegetation; on the reverse, a substantial attachment peg. 50 grams, 53 mm. Extremely fine condition. Excessively rare.

£1,200 - £1,800

*Found Ramsey, Lincolnshire (36 miles from the Luttrell seat in Irnham). Possibly of Sir Geoffrey Luttrell 1276-1345. The Luttrell family is associated with the Luttrell Psalter, a 14th century illuminated religious manuscript.*



620

**620 Medieval Bronze Figural Purse Suspender.** Circa 12th-15th century AD. A bronze purse-hanger cast in the form of a saint or ecclesiastical figure with hood and loose robes; the casting hollow at the rear with a sturdy clip; beneath his feet a tubular fitting for attachment. 25 grams, 60 mm. Very fine condition.

£220 - £280

*Found in Ely, Cambridgeshire, England 1987.*

**621 Medieval Bronze Warrior Mask Mount.** Circa 13th-16th century AD. A convex cast mount formed as a human face above a waisted triangular plate; the face rounded, with lentoid eyes, wearing a helmet with a prominent nasal; the plate decorated with a lancet motif. 15 grams, 34 mm. Very fine condition.

£100 - £150

*Found Warwick, England.*



621

622

**622 Medieval Bronze Romanesque Lozenge Brooch.** 14th-15th century AD. An openwork lozenge plate brooch, cast in bronze with gilded upper surface; the points of the lozenge formed as stylized lion masks; four discoid cells on the arms with white enamel infill; the pin round-section with cross-bar. See Hattatt, R. *Brooches of Antiquity*. 10 grams, 34 mm. Very fine condition, complete.

£220 - £300

*Found on the Thames Foreshore in the 1970's, recorded with the Museum of London.*

**623 Medieval Bronze Spouted Vessel.** 13th-14th century AD. A cast bronze vessel filler comprising a shallow bowl with central annular boss; on three sides of the rim a broad flange with lobed profile bearing reserved aviform designs on a textured disc; on the fourth side a shallow pouring spout; basal ring with three feet. See Wheeler, R.E.M. *London Museum Medieval Catalogue*, figs. 78,79 for similar zoomorphs. 85 grams, 139 mm. Very fine condition, complete.

£160 - £200

*Found on the Thames foreshore near Tower Bridge in 1970 and recorded with the London Museum at that time.*



623

624



**624 Medieval Bronze Steelyard Weight.** Circa 14th century AD. A lead-filled bronze weight, piriform with cast suspension loop above; a raised elliptical identification mark on the shoulder. 615 grams, 72 mm. Very fine condition, complete. £100 - £150

*Ex Moore Antiquities.*

627



**625 Medieval Iron Prick Spur.** Circa 12th century AD. A forged iron prick spur with asymmetrical attachment points; the shank conical with a narrow collar (Type 10); the yoke pointed and carinated; one terminal with two round holes (Type A(i)) and the other with a transverse loop (Type D). Wheeler, R.E.M. *London Museum Medieval Catalogue*, 1940, p.94ff. 34 grams, 131 mm. Very fine condition. £40 - £60

*From an old English collection.*

**626 Medieval Iron Barbed Arrowhead.** Circa 12th-13th century AD. A barbed and socketed arrowhead of lentoid section; the socket pierced to accept a securing rivet. Wheeler, R.E.M. *London Museum Medieval Catalogue*, 1940, type 13. 22 grams, 75 mm. Very fine condition. £20 - £30

*Found on the Thames Foreshore. Probably an arrow used in battle rather than for hunting.*

628



**627 Medieval Knife with Lanceolate Blade.** Circa 12th-15th century AD. An iron knife with lanceolate blade, hammer-welded; the handle cast in bronze, flat-sectioned expanding to a decorative bird finial; a stamped maker's mark on the blade. Wheeler, R.E.M. *London Museum Medieval Catalogue*, 1940, plate XI no.6. 16 grams, 133 mm. Very fine condition, complete. £70 - £100

*Found on the Thames foreshore near the Tower of London.*

**628 Medieval Bone-Handled Knife.** Circa 12th century AD. A medieval quillon dagger comprising a single-edged iron blade with narrowing tip, a cast bronze crossguard with sculpted lower edge, bone handle with incised guilloche pattern on both faces, and D-section cap. See Wheeler, R.E.M. *London Museum Medieval Catalogue*, 1940 p.38ff. 59 grams, 185 mm. Very fine condition, complete. £400 - £600

*The form of the blade and manner of fixing the hilt is a continuation of the Anglo-Saxon tang-spike method used on seax blades; only the quillons (crossguard) suggests a post-Saxon date for the knife.*

**629 Medieval Rock Crystal Reliquary.** A Mesopotamian crystal jar (dating to circa 800 BC), re-used 12th-13th century AD. A cylindrical crystal vessel with ribbed band decoration on the body; a wooden stopper in the aperture. 120 grams, 58 mm. Extremely fine condition. Extremely rare. £700 - £900

*From an old English collection. The slight fissure in the crystal gives an opalescent, refractive sheen to the jar when turned in the light.*



629



630 **Medieval Painted Fresco Panel.** 15th century AD. An Italian painted fresco fragment, transposed to a textile support, the subject of the design being the death of St. Francis; the scene composed with four standing figures in discussion surrounding the holy man whose expression is peaceful and serene. 115.5 x 87.5 cm Mounted and framed. Important and extremely rare. £45,000 - £60,000

*Ex Choppin de Janury & Associes, Paris auction, 4th June 2007, Lot 152; shown on the front cover of the catalogue. Accompanied by export customs declaration approved by the Italian Ministero per i Beni e le Attività Culturali and certificate issued by the Alliance Science Art - Francine Maurer GMBH attesting that, notwithstanding some evidence for possible restoration, the pigments used are consistent with a 15th century date.*





631

631 **Medieval Limestone Madonna with Orb Statuette.** Mid-14th to early 15th century AD. A delicately carved (probably in Caen stone) Rheims full-length figurine of a robed and long-haired female saint (or the Virgin Mary?) holding and looking at an orb in her right hand; set upon a square integral base, the hands showing the typical long, slender and straight fingers of the Romanesque style. 2.9 Kg,

37 cm tall. Very fine, with a hanging attachment ring set into the back. Very rare.

£11,000 - £15,000

*Ex Christie's Sale 5023, 22 January 2006, Lot 76; ex the late Michael Collishaw Collection. This figurine is a good example of medieval ecclesiastical statuary and would probably have been set into a niche in a shrine.*



632

632 **Medieval Limestone Madonna with Child and Orb Figurine.** Mid-14th century AD. A French limestone (probably Caen stone) figurine of the robed, girdled, cowled and seated Virgin Mary holding an orb (representing the world) in her right hand, looking at and supporting with her left hand the infant Jesus, standing on her

left knee. 3.36 Kg, 26.5 cm tall. Very fine and beautifully modelled. Freestanding. Rare and of exceptional quality. £7,000 - £9,000

*Ex old Dutch Collection. A very good example of high quality medieval statuary which would have been placed in a niche within a significant ecclesiastical building.*



633



634



**633 Post Medieval Tudor Gold & Turquoise Ring.** Circa 16th century AD. The plain hoop expanding to the shoulders; the bezel an elliptical cloison enclosing a turquoise; the shoulders with engraved floriate designs. Gold and turquoise, 1.60 grams, 22 mm overall. (Approximate size UK I½, USA S½, Europe 8.16, Japan 8). Very fine and fully wearable. £350 - £500

*Ex old English collection; bought on the London market, 1970s.*



635



**634 Post Medieval 'Contineu Constant' Gold Posy Ring.** Circa 18th century AD. A heavy finger ring with a plain D-section hoop; engraved internally in a fine italic hand 'Contineu constant' with 'long s'; a maker's mark comprising a capital 'E' within a heater shield. Evans, J. *English Posies and Posy Rings*. Gold, 6.64 grams, 21 mm external. (Approximate size UK M, USA 6¼, Europe 13.0, Japan 12). Extremely fine wearable condition. £500 - £700

*From an old English collection.*



636



**635 Post Medieval 'A true Friends' gift' Gold Posy Ring.** Circa 18th century AD. A large finger ring with plain, narrow band; inscribed internally in an italic hand 'A true Friends' gift'; the maker's mark partially abraded. Evans, J. *English Posies and Posy Rings*. Gold, 2.31 grams, 20 mm external. (Approximate size UK Q, USA 8¼, Europe 17.77, Japan 17). Extremely fine wearable condition. £700 - £900

*From an old English collection.*



637



**636 Post Medieval 'My gift is myselfe' Decorated Gold Posy Ring.** 17th century AD. A delicate posy ring with D-section hoop depicting on the outer face a hunting scene; on the inner face, an inscription in seriffed script 'My gift is myselfe' (with 'long s' in 'myselfe'). Gold, 2.34 grams, 17 mm external. (Approximate size UK G, USA 3¼, Europe 5.55, Japan 5). Very fine condition. Extremely rare. £1,200 - £1,800

*Found on the Thames foreshore in the 1970's, recorded with the Museum of London.*



638



**637 Post Medieval 'God aboute keepe vs in loue' Gold Posy Ring.** 17th century AD. A plain D-section finger ring inscribed on the inner face in italic script 'God aboute keepe vs in loue' and punched maker's mark 'WC'. Gold, 4.78 grams, 19 mm external. (Approximate size UK K, USA 5¼, Europe 9.95, Japan 9). Extremely fine condition. Heavy and wearable. £400 - £600

*From an old English collection.*



**638 Post Medieval 'Not lost but gone before JS,' Gold Posy Ring.** 18th century AD. A mourning ring comprising a thick D-section hoop with external skull motif between foliate panels; the internal inscription in an italic hand 'Not lost but gone before JS' (with 'long s' in 'lost') and maker's mark. Gold, 7.24 grams, 22 mm external. (Approximate size UK N, USA 6¼, Europe 14.00, Japan 13). Very fine condition. £300 - £400

*Found in Buckinghamshire, England.*



639



640

**639 Post Medieval 'As my life I love thee' Gold Posy Ring.** Circa 18th century AD. A delicate finger ring with a D-section hoop; the internal inscription in a fine italic hand 'As my life I love thee' with a five-pointed star and faint maker's mark of a capital 'E' within a cartouche. Gold, 2.50 grams, 20 mm external. (Approximate size UK P½, USA 7¾, Europe 16.86, Japan 16). Extremely fine condition.

400 - £600

*Ex Hough collection.*

**640 Post Medieval 'Remember x the x EnD' Gold Posy Ring.** 18th century AD. A delicate finger ring with a plain, D-section hoop; internally is inscribed in italic miniscule with seriffed capitals 'Remember x the x EnD'. Gold, 0.92 gram, 14 mm external. (Approximate size UK B½, USA 1¼, Europe -, Japan 0). Extremely fine condition.

£300 - £400

*Recorded under the Portable Antiquities Scheme (reference DOR-72B07) and less than 300 years old at time of finding.*



641

**641 Post Medieval 'Honored for thy Vertu' Gold Posy Ring.** 18th century AD. A posy ring with plain D-section hoop, with internal inscription in a neat italic hand 'Honored for thy Vertu' and a maker's mark. Gold, 2.12 grams, 20 mm external. (Approximate size UK M½, USA 6½, Europe 13.41, Japan 13). Very fine condition, slightly scuffed.

£300 - £400

*Ex Tucker collection.*

**642 Post Medieval Gold Engraved Posy Ring.** Circa 16th century AD. A finger ring with D-section hoop, decorated on the exterior with incised sunburst designs, worn remains of an inscription inside. Gold, 2.61 grams, 21 mm external. (Approximate size UK N½, USA 6¾, Europe 14.44, Japan 14). Very fine condition, some wear.

£400 - £500

*Bought in Antwerp, from a Belgian dealer.*



642

**643 Post Medieval Gold and Bloodstone Heraldic Signet Ring.** 16th-17th century AD. An English heraldic signet ring comprising a ribbed hoop and quadrangular cloison bezel setting for an engraved bloodstone; the design an heraldic shield with the arms of Waterhouse impaling those of Willis above a scroll bearing the Latin motto 'NON NOBIS SOLUM' (Not For Ourselves Alone). See Oman, C.C. *Victoria and Albert Museum Catalogue of Rings 1930*, plate XXI. Gold and bloodstone, 18.13 grams, 24 mm overall, internal 21 mm. (Approximate size UK W½, USA 11¼, Europe 26.0, Japan 25). Extremely fine condition.

£1,000 - £1,500

*With supporting documentation from Beacon Genealogical and Heraldic Research suggesting the arms show a marriage between a gentleman of the family of Waterhouse, Co. York and those of a lady who was the daughter of the family of Willis, possibly of Fen Ditton, Co. Cambridge, Horingsley and Bales, Co. Hertford or Co. Dorset.*



643



644



645



646



647



648

**644 Post Medieval Georgian Decorated Gold Ring.** 18th century AD. A gold D-section finger ring with elaborate scrolled foliage decoration on the exterior of the hoop. Gold, 5.44 grams, 23 mm external. (Approximate size UK S½, USA 9½, Europe 20.73, Japan 20). Extremely fine condition, complete. £600 - £800

*Found in Warwickshire, England, 1975.*

**645 Post Medieval Gold Swivel Seal Ring.** Circa 18th century AD. A gold swivel forming the band for the ring, formed with palmettes and openwork masks on the shoulders; the elliptical bezel with granulation on the outer edge; the amber-coloured composite intaglio depicting a naked male bestriding two horses. Gold, 11.96 grams, bezel 25mm (approximate size UK Q, USA 8, Europe 17.49, Japan 17). Extremely fine condition. £350 - £500

**646 Post Medieval Bendigo (Australia) Goldfields Gold Buckle Ring.** Dated 1856, and from the famous Australian Bendigo mine gold rush, this buckle ring bears the internal inscription From Break-o-day Gold Mine, Bendigo. May 2nd 1856 C. J. Brown. See *Bendigo Its Environs*, volume 1 for background information. Gold, 16.27 grams, 23.41 mm, 18.73 internal (Approximate size UK R, USA 8 1/2, Europe 18 3/4, Japan 18). Externally worn. Extremely rare attributed item from the early period of this important Australian goldfield. £800 - £1,200

*Property of a retired Australian gentleman. Alluvial gold was first discovered at Bendigo Creek in 1851 and soon traced back to the source reefs. By June 1852, there were over 20,000 diggers in the area and, by 1862, it is estimated that the field had produced up to 4,000,000 ounces of gold. Mines in the area are still productive today.*

**647 Post Medieval Georgian Gold Heraldic Pendant Seal.** 18th-19th century AD. A pendant seal formed as a ribbed suspension loop attached to a larger expanding ring; below a stepped elliptical bezel engraved on the lower surface with an armorial seal in the classic 18th-19th century florid style with 'caged' helmet visor and elaborately scrolled lambrequin; the heater shield divided per fess, above an ermine and flower, below a lion rampant; the lower edge of the shield and scroll defaced. Gold, 19.14 grams, 46 mm overall. Extremely fine condition, light abrasion to the seal. £700 - £900

**648 Post Medieval Gold Heraldic Mount.** Circa 18th century AD. A decorative heraldic mount in the form of a bull, affronted, within a ducal crown. Gold, 1.49 grams, 15 mm. Very fine condition. £140 - £200

*Ex Glover collection.*



649

**649 Tudor Silver-Gilt Facetted Ring.** 16th century AD. A finger ring consisting of an expanding flat-section hoop with diagonal facetting on the shoulders, with traces of gilding. Silver-gilt, 3.41 grams, 22.60 mm external. (Approximate size UK U, USA 10, Europe 22.52, Japan 22). Very fine condition. £200 - £300

*Found Banham near Kenninghall, Norfolk, England 1989.*

**650 Tudor Silver-Gilt Ring.** 16th century AD. A finger ring with D-section hoop, formed with three pelleted bands and three lanceolate panels. See Oman, C.C. *British Rings 800-1914*. Silver-gilt, 4.44 grams, 23 mm external. (Approximate size UK T, USA 9½, Europe 21.26, Japan 20). Very fine wearable condition. £300 - £400

*From an old English collection.*

**651 Post Medieval Silver Ropework Ring.** Circa 18th century AD. A decorative finger ring comprising two plain external hoops containing two twisted-wire hoops. Silver, 7.06 grams, 22 mm external. (Approximate size UK R, USA 8¾, Europe 19.00, Japan 18). Very fine condition, complete. £150 - £250

*Property of a Gentleman.*

**652 Post Medieval 'I LIKE MY CHOICE' Silver-Gilt Posy Ring.** Circa 18th century AD. A large plain silver hoop inscribed internally in seriffed capitals I-LIKE-MY-CHOICE. See Evans, J. *English Posies and Posy Rings* p.54 for variant spellings of this text. Silver-gilt, possibly pale gold, 3.57 grams, 22 mm external. (Approximate size UK Q½, USA 8½, Europe 18.62, Japan 18). Extremely fine condition and wearable. £300 - £400

*Ex an old jewellery collection.*

**653 Post Medieval Silver Decorated Hair Pin / Bodkin.** 17th-18th century AD. A slender rectangular-section bodkin with decorative geometric panels on the broad faces; the finial a lentoid knop, pierced and surmounted by a cupped disc. Silver, 6.27 grams, 122 mm. Very fine condition, complete. £120 - £180

*Found on the Thames foreshore in the 1970's, recorded with the Museum of London.*



650



651



652



653



654



655



656

**654 Spanish Silver Reliquary Pendant Cross.** Circa 17th century AD. An openwork cross pendant of complex construction: an openwork upper plate pierced with rounded cross pommee voids, hinged at the upper end and with a pierced flange at the lower; the lower section of the cross formed as six connected cells with a pierced flange on the lower end; above the upper arm a florid openwork mount rising to a suspension loop and knob; on the reverse an engraved motif of the crucifixion under a plate bearing the text INRI and below this a stylized skull-and-cross-bones motif. Silver, 23.9 grams, 94 mm. Very fine condition, working hinge; complete. £450 - £600

**655 Tudor Bronze Openwork Cherub Mount.** Circa 16th century AD. A cast openwork gilt copper-alloy mount displaying a human face amid a dense mass of foliage; below the face the foliage extending into a pelta-shaped feature recurving to meet the extremities; two attachment lugs present on the reverse. See Mitchener, M. *Medieval Pilgrim & Secular Badges* for similar examples. 13 grams, 43 mm. Very fine condition, much gilding remaining. £60 - £90

*Found Ashby de la Zouch, England.*

**656 Ottoman Bronze Gunpowder Flask.** Circa 16th-17th century AD. A hollow cast bronze flask comprising globular bulb with punched pellet and chevron decoration with traces of niello inlay; the ribbed collar with pellet detailing and pierced lobe to which is attached a triangular shackle with triple-collar; the narrowing curved spout continuing the pellet and chevron design; the collar with billeted borders and incised lozenge bands; traces of enamel in the design. 95 grams, 113 mm. Very fine condition. £60 - £90



657



658

657 **Central American Pukara Ceramic Figurines.** 2nd century BC-2nd century AD. A hollow ceramic animal, perhaps a dog, executed in a pink ceramic with cream-white finish; offered with a dark grey ceramic figure with a necklace of triangular pendants. 195 grams total, 47 - 118 mm. Very fine condition; slight chip to animal's flank, head of figure lost in antiquity. [2] £120 - £180

*Ex Johnstone collection (d.), formed in the 1930's.*

658 **Central American Olmec Carved Stone Face.** Circa 700-400 BC. A stone carving in the half-round depicting an Olmec male face, with stern expression and ridged headdress. 995 grams, 165 mm. Very fine condition, complete. £220 - £300

*Ex Johnstone collection, formed in the 1930's.*

659 **Central American Mayan Obsidian Curved Sacrificial Knife.** Circa 700-900 AD. A knapped bifacial blade in black obsidian, of triangular section and gentle double-curved plan. 85 grams, 179 mm. Very fine condition, complete. Very rare. £160 - £240

*Ex Johnstone collection, formed in the 1930's.*

660 **Central American Mayan Ceramic Olla.** Circa 750-950 AD, Late Classic Period. Plain with four protruding lugs on the rim, with flat base. 335 grams, 75 mm high. Fine condition. £40 - £60

*From western Honduras - southern Belize region.*

661 **Central American Flint Spearhead.** A finely-knapped heater-shaped spearhead with flat central section in a mid-grey stone with white inclusions. 30 grams, 77mm. Fine condition. £20 - £40

*Ex Johnstone collection, formed in the 1930's. Found in Honduras.*



659



661





662



663



662

**662 Near Eastern Engraved Gold Vessel With Lid.** 17th-18th century AD. A decorative gold vessel comprising a hemispherical pot with dished base, engraved with running scrolls, vegetation and bird motifs, a square panel beneath the base; the lid formed as a series of four steps decorated with running scrolls and petal motifs, surmounted by a mount of filigree with granulation detail enclosing a setting of four D-shaped claws, each with a granule, holding a hemispherical polished amethyst. Gold, 77.06 grams, 74 mm height, 57mm external diameter. Very fine condition, some minor wear to the lid. £2,200 - £2,800

*From an old English collection formed in the 1970's.*



664

**663 Near Eastern Gandaran Stone Buddha Head Carving.** 2nd century AD. A carved stone sculpture representing the head of Buddha with top-knot, half-closed eyes and elongated earlobes against a plain D-shaped backplate; the carving sensitive and delicately executed; supplied with a custom-made stand. 2.51 Kg including stand, 192 mm. Extremely fine condition. £400 - £600

*From an old English collection.*

**664 Near Eastern Gandaran Stone Buddha Statuette.** 2nd century AD. A carving of the Buddha in blue-grey schist against a plain discoid backplate; the pose upright, cross-legged and serene, with half-closed eyes, straight nose, arched eyebrows and elongated earlobes; the hair thick, drawn up into a topknot; the robe draped simply over the body; the left hand gripping a fold of cloth, the right raised with the palm outwards; the dais draped with cloth beneath; supplied with a custom-made stand. 4.64 Kg including base, 248 mm. Very fine condition. £550 - £750

*From an old English collection. The Gandaran Empire was located in the region of modern Afghanistan, Pakistan, and northwest India. Gandaran art combines Graeco-Roman artistic techniques with traditional Indian Buddhist iconography in a unique hybrid style.*



665

**665 Near Eastern Gandaran Stone Figural Frieze.** 1st century BC-1st century AD. A carved stone frieze of a group of figures: on the left a warrior in scale armour drawing his sword with his right hand; a bearded, bare-chested sage with a staff supporting a bowl in his left hand; a seated female in a raised chair nursing a baby on her lap; a standing female with raised right hand and bowl in her left; two females standing behind a mare nursing her foal; a tree with heart-shaped vegetation; the figures carved in the half-round on a plain, flat base; supplied with custom-made stand. 5.02 Kg including base, 328 mm. Very fine condition. £800 - £1,200

*From an old English collection.*

**666 Chinese Carved Wooden Buddha Figurine.** Circa 1700 AD. A very large carved wooden figurine of the Buddha with red, dark blue and yellow pigments; the elaborate headdress surmounting the hair to frame the rounded face; the garments neatly executed; with cummerbund tied around the chest; the feet bare; the base with lotus-leaf motif on the outer face. 10.37 Kg, 95.5 cm. Fine condition. £450 - £650



666



667

667 **Sassanian Clay Bulla Seals.** Circa 226-651 AD. A mixed group of clay seal impressions comprising those of: Pirag, Amargar of Eran-abzud-Kusro, Amargar of Bazaha and Armin, Frahad of Karen and a lion couchant with the word 'increase'. 205 grams total, 39-81 mm. Very fine condition. [5] £180 - £240

*Ex Hargreave collection, collected in the 1950's and 1960's.*



668

668 **Sassanian Clay Bulla Seals.** Circa 226-651 AD. A mixed group of clay seal impressions comprising those of: Armagar of Sahr-Padar-Peroz, Weh-Sabuhr, Armagar of Sind, Pirag and an illegible text with an animal. 191 grams total, 39-55 mm. Very fine condition. [5] £180 - £240

*Ex Hargreave collection, collected in the 1950's and 1960's.*



669

669 **Sassanian Clay Bulla Seals.** Circa 226-651 AD. A mixed group of seal impressions comprising those of: Maguh, Pirag, Amargar of Fraswargar, Dad-Burz-Mihr and an illegible text accompanied by a ram. 250 grams total, 41-54 mm. Very fine condition. [5] £180 - £240

*Ex Hargreave collection, collected in the 1950's and 1960's.*

670 **South East Asian Hoard of Cash Coins.** Circa 12th century AD. An unopened, intact hoard of cash in its original pottery container; by weight, estimated to contain over 2,000 coins. 9.95 Kg, 22 cm high. Very fine condition. £300 - £400

*Ex private museum.*



670



671

**671 Chinese Ceramic Horse and Rider Figurine.** 1st century BC, Han Dynasty. A moulded ceramic figurine depicting a court official on horseback; the horse in static pose, powerfully built, muscular with long legs, erect mane, open mouth and docked tail; the horseman with coral riding coat with white cuffs and collar, an armoured corselet over the chest and back; details of the blanket and reins moulded into the horse. 2.42 Kg, 35 cm overall height. Very fine condition, friable colour. £800 - £1,200

*From an old English collection. The taller and more powerful Ferghana breed of horse was acquired by the Chinese in 101 BC after defeating the prince of the Ta-yuan people; ownership of this stronger, more athletic breed soon became a mark of high-status among high-ranking officials for draught and for riding.*

**672 Chinese Wei Ceramic Court Lady Figurine.** 386-534 AD Wei Dynasty. A moulded ceramic figurine in cream-grey fabric depicting a courtly lady in an elegantly draped flared garment; her hands drawn up to her chest within her long sleeves; her headdress and hair arched above her brow; her face carefully modelled with rounded features; her spinal posture gently curved. 645 grams, 257 mm. Very fine condition, repair to neck. £260 - £300

*From an old English collection.*



672



673



674



675

**673 Chinese Sui Soldier Figurine.** Circa 581-618 AD. A well detailed earthenware soldier standing upon an integral square base, wearing a short belted tunic with decorative hem, breastplate and high collared shoulder cape; hands clasped in front of the chest; the face with prominently moulded features, framed by low tightly fitting helmet. 850 grams, 27 cm high. Fine condition with traces of the original paint remaining. £250 - £350

*From an old Scottish collection.*

**674 Chinese Ceramic Tang Court Lady Figurine.** 618-906 AD, Tang Period. A moulded statuette in pale grey-brown fabric depicting a lady of the court in simple, formal robes; her hair in an elaborate headdress; her face skillfully modelled, with dolorous expression and traces of cosmetics; her hands raised to her chest within her long sleeves; one slipper emerging from beneath the hem of her gown; the base unadorned; some surface pigment remaining; supplied with custom-made container. 1.15 Kg, 35 cm. Very fine condition, complete £950 - £1,250

**675 Chinese Ceramic Court Official Figure.** 618-906 AD, Tang Dynasty. A ceramic moulded statuette in pale grey-cream fabric depicting an official of the court in formal robes; the hair drawn back and piled beneath the ceremonial headgear; the facial features rounded and benign; the hands drawn up to the chest, revealed by the turned dark green cuffs of the brown robe; the trousers pale yellow with dark green sash emerging from beneath the robe; the belt visible on the reverse; the base quadrangular with rounded corners; the surfaces of the clothing glazed; supplied with custom-made container. 1.12 Kg, 41 cm. Extremely fine condition, complete. £900 - £1,200

*Accompanied by thermoluminescence analysis certificate.*



676

**676 Chinese Bronze Hunting Scene Mount.** 2nd century BC - 2nd century AD, Han dynasty. A cast bronze hunting scene modelled in the half-round, comprising a stag in flight before a mounted hunter; the stag with gaping mouth, incised fur detail, protrusive ear and antlers; the horse reined with erect tail, flying mane and incised fur detail; the hunter with strong facial detail, in belted striped riding coat, grasping the reins in his left hand; his right hand a separate casting, in gripping position; the base a pair of entwined serpents, one biting the stag's foreleg and the other the horse's tail; on the reverse a pointed mounting bracket. See *The Genius of China Royal Academy Exhibition Catalogue*, 1973-4, item 205 for a similar mount. 215 grams, 175 mm. Extremely fine condition. £450 - £600

**677 Far Eastern Cambodian Crystal Pendant.** Circa 12th century AD. A large Cambodian quartz crystal intaglio carved with the figure of a female amid surrounding vegetation; the reverse domed and pierced laterally for suspension; the gold mount and suspension loop believed to be modern. 17.15 grams, 46 mm. Extremely fine condition. £400 - £600

*Ex Stark collection.*



677

678 **Roman Gold Intaglio and Cloison Rings.** 2nd century BC-2nd century AD. A plain gold hoop expanding to an elliptical bezel in which a garnet cabochon is set in a gold collar; a plain gold hoop expanding to an elliptical bezel in which is set a red and white intaglio depicting a winged horse; a plain gold hoop expanding to an elliptical bezel in which is set a yellow and white intaglio depicting a wreathed female bust; all three rings formed from gold sheet over a core. Higgins, R.A. *Greek and Roman Jewellery*, plate 62. Gold and stone, 8.94 grams total, 23 mm external diameter of the largest ring. Very fine condition, some loss and distortion. [3] £550 - £750

*From an old English collection formed in the 1980's.*

679 **Roman Single Gold Earrings.** Circa 2nd century AD. A mixed group of earrings comprising one openwork plate with floral design; one long plate with circular cell above and piriform below, with filigree surround; one bar with granulation pyramids and pellet bar pendant; one gold hoop with filigree rim and granulation pyramid below; one wire hook with convex rectangular pendant. See Higgins, R.A. *Greek and Roman Jewellery*. Gold, 8.20 grams total, 24-32 mm. Very fine condition. [5] £120 - £180

*Ex the Chaplin collection, believed found in North Africa.*

680 **Roman Single Gold Earrings.** Circa 1st-2nd century AD. A mixed group of single earrings comprising one hook with openwork floral plate; one hook with circular repoussé beading; one coil with faux pyramidal granulation; one openwork lunate panel with pendant chains. See Higgins, R.A. *Greek and Roman Jewellery*. Gold, 6.28 grams, 17-41 mm. Very fine condition, complete. [4] £120 - £180

*Ex Winter collection.*

681 **Roman Silver Ring Group.** Circa 3rd-5th century AD. Comprising one with D-section hoop rising to a quadrangular bezel with foliate designs on the shoulders, the bezel a red gemstone intaglio of opposed beasts set en cabochon; one with flat-section hoop expanding to an elliptical bezel with beaded design on shoulders, the bezel a translucent pale yellow gemstone with intaglio of looped elements set en cabochon; one with flat-section hoop supporting an elliptical plate bezel with incuse text NOCVO between curved lines. See Oman, C.C. *Victoria and Albert Museum Catalogue of Rings 1930*, pl.VI item 161. Silver, 11.35 grams total, 21-24 mm overall. Very fine condition, complete and wearable. [3] £220 - £280

*From an old English collection.*

682 **Roman Silver Repoussé Plaques and Bronze Plate.** Circa 3rd-4th century AD. A mixed group comprising: a rectangular plaque with punched repoussé geometric design; a rectangular plaque with punched repoussé motif of a discoid face with radiating crown above a circlet, the arms gripping sceptres; a bronze plate with scrolled edges, pierced in three places with attachment rivets. 68 grams total, 55 - 103 mm. Very fine condition. [3] £80 - £120

*Property of a gentleman.*

683 **Roman Bronze Rings and Mounts.** 3rd-6th century AD. A mixed group of five finger rings, one with a red gemstone intaglio depicting a bird in flight, one a male face, one a 'star of David' and two with lettering; a lead male bust; an eagle mount; a Byzantine belt-plate depicting a vine with bird and disc. 74 grams, 59 mm (belt plate). Fine condition. [8] £150 - £180

684 **Roman Large Keys.** Circa 1st-4th century AD. A mixed group of Roman keys with transverse plates, their bits formed on the leading edges; three with flat rectangular plates and circular-section shaft; one with a flat, triangular shaft; one with a piriform bow and simple recurved bit. 130 grams, total, 48 - 80 mm in length. Very fine condition. [5] £40 - £60

*Ex Winter collection.*

685 **Roman Oil Lamps.** Circa 1st century AD. A mixed group of oil lamps comprising: a small example with orange-red surface,

decorated with roundels and plant motifs; a low, wide lamp with laurel-leaf design round the central perforation; a darker lamp with pierced handle and laurel-leaf design. 150 grams total, 86-103 mm overall. Very fine condition, complete. [3] £120 - £180

686 **Late Roman and Middle Saxon Strap Ends.** 4th-9th century AD. A mixed group of Late Roman and Anglo-Saxon strap ends; eleven convex-sided with zoomorphic terminals, one with silver scroll inlay; one with animal-head terminal modelled in the round; two Late Roman examples with openwork detailing. Thomas, G. *Late Anglo-Saxon and Viking-Age Strap-ends 750-1100*. 69 grams total, 29 to 49 mm in length. Very fine condition. [14] £50 - £70

*Ex Winter collection.*

687 **Anglo-Saxon Bronze Small-Long Brooches.** 5th-6th century AD. A mixed group of Anglo-Saxon small-long brooches including five with trefoil headplates; some with incised and punched decoration. MacGregor, A. & Bollick, E. *A Summary Catalogue of the Anglo-Saxon Collections (Non-Ferrous Metalwork)*. 85 grams total, 45 to 73 mm in length. Fine condition. [7] £50 - £70

*Ex Winter collection.*

688 **Anglo-Saxon Stirrup Mounts and Other Artefacts.** A mixed group of Anglo-Saxon artefacts including three 11th century copper-alloy stirrup mounts; a 6th-7th century sword pyramid; a 9th century lozenge brooch; a disc die; a 6th century copper-alloy buckle tongue; a 7th century zoomorphic hanging bowl mount; an 11th century Winchester Style strap end. For stirrup mounts, see Williams, D. *Late Saxon Stirrup Strap Mounts*; for lozenge brooches, see Hammond B. *British Artefacts - vol.2 Middle Saxon & Viking*; for sword pyramids see Hammond, B. *British Artefacts - vol.1 Early Anglo-Saxon*. 114 grams total, 21-51 mm. Fine condition. [9] £50 - £70

*Ex Winter collection.*

689 **Tudor Pewter Spoon and Other Items.** A mixed group of artefacts including a Tudor period pewter spoon with hexagonal-section handle; three Roman conical lead weights; a medieval iron nail; a medieval tongue-shaped copper-alloy belt plate; a Romano-British copper-alloy bronze toggle. See Wheeler, R.E.M. *London Museum Medieval Catalogue 1940*. 155 grams, 184 mm length of spoon. Very fine condition. [7] £20 - £40

*Ex Winter collection.*

690 **Stuart Silver and Bronze Rings.** 16th-17th century AD. A silver Stuart finger ring comprising an expanding hoop rising to an octagonal bezel with incuse vinescroll and sunburst motifs; the bezel forming a cloison setting for a gemstone (lost in antiquity); offered with a bronze finger ring with D-section hoop rising to flanged shoulders with beading, the bezel a tubular mount with everted flange, retaining traces of enamel. See Oman, C.C. *British Rings 800-1914*, pl.27 E and F. Silver, 3.05 grams, 23 mm overall (Approximate size UK S, USA 9, Europe 20.0, Japan 19); Bronze, 7.17 grams, 28 mm overall. (Approximate size UK R½, USA 9, Europe 19.38, Japan 19). Very fine condition. [2] £20 - £30

*From an old English collection.*

691 **Stuart Items from the Site of the Battle of Worcester - 1651.** Various items found on the site of this famous and decisive battle, including a clay tobacco pipe, a belt fitting, buttons and lead items. All mounted on a framed felt display stand. See Spicer, T. & Stacey, M. *The Battle of Worcester 1651* for the story and details of this battle. 315 grams, frame 26 cm x 21 cm. Generally fine and interesting. [9] £30 - £50

*Found Worcester battle field. The Battle of Worcester, on 3rd September 1651, saw the defeat of Charles Stuart (who then fled to France) by Cromwell, the end of nine years of Civil War and the last field command for Cromwell. The Commonwealth was then destined to continue until the Restoration in 1660.*

Sale: 16 December 2010

Name:  
Address:

Telephone:  
E-mail:

Office use only  
Date Received:  
  
Bidder No:

Please bid on my behalf for the following lot(s) up to the maximum bids given below. I understand that a successful bid will additionally incur a 15% Buyer's Premium, plus VAT. I agree to pay all sums due promptly, including shipping, insurance and other costs as may be relevant. I am over 18 years old.  
Bids must be in accordance with the increments given in our Terms and Conditions.

All Commission Bids must be received by no later than 9pm on Tuesday 14 December 2010.

Lot No	Item Description	Max Bid £

Lot No	Item Description	Max Bid £

I confirm that I have read and agree to accept the Terms and Conditions of Sale.

Signed: \_\_\_\_\_ Date: \_\_\_\_\_

If successful, I wish to pay for my purchases by:

Cash/Cheque/Debit Card/Credit Card/Bank Transfer/Other.....\*

Please note that payments by Credit Card are subject to 3% surcharge on the total invoice price. There is no surcharge for Debit Cards. All payments must be made in Pounds Sterling.

Card Details: Mastercard/Visa/Amex/Debit Card/Switch\*

Name (as given on card):

Card Number:

Security No:

Start date:

(last three digits on signature strip)

Issue No:

Expiry Date:

I will collect my purchases/Please ship my purchases and add postage costs to my invoice\*

\*delete as required





**General**

TimeLine Auctions Ltd acts as agent for the seller only. The sale shall be conducted by the Auctioneer nominated by TimeLine Auctions Ltd. The Auctioneer shall have sole discretion as to the conduct of any sale and his decision shall be final in all matters. TimeLine Auctions Ltd reserve the right to refuse entry, decline bids or to expel any person from any sale, at their sole discretion.

**Sellers**

All goods submitted to TimeLine Auctions Ltd for sale by public auction will be listed and catalogued at the discretion of TimeLine Auctions Ltd.

**Selling Commission:**

Standard Rate is 15% of the Hammer Price plus VAT at the prevailing rate. Special Commission Rates may be applied for individual items of significant value or for collections, at the sole discretion of TimeLine Auctions Ltd.

**Storage Charges:**

Daily or such other charges for storage of goods submitted for public auction may be levied at the discretion of TimeLine Auctions Ltd. Such charges may include a charge for collection of goods from the Seller's home/premises, if appropriate.

**Insurance Charges:**

Daily or such other charges for insuring Seller's goods may be levied at the discretion of TimeLine Auctions Ltd. Such insurances and liability shall commence from the date of receipt of any goods and shall expire at the time the hammer falls; and will be limited in value to the amount of any reserve, or to the amount of the low estimate, as relevant.

**Other charges:**

Special charges for any unusual research, special imaging, testing, consultation with external specialists, conservation, cleaning or other services in connection with any aspect that is considered necessary for the proper presentation of any goods offered for sale will be levied at the discretion of TimeLine Auctions Ltd; however, the need for such services and costs will be advised in advance.

**Value Added Tax:**

Where applicable, Value Added Tax at prevailing rate(s) will be applied to all of the Selling Commission and other Charges due from the Seller. Sellers resident outside of the United Kingdom or European Union should note that Import VAT may be payable at the time of importation to the United Kingdom on a valuation basis, with adjustment made after the auction, based upon the final Hammer Price(s).

**Reserves:**

The Seller may set a Reserve Price, being the Minimum Hammer Price at which the goods may be sold at the discretion of TimeLine Auctions Ltd.

**Estimates:**

The setting of Estimates shall be at the discretion of TimeLine Auctions Ltd; and the amount of any Estimate shall not be taken as being indicative of the true Value of any Goods.

**Unsold Lots:**

In the event of any Lot being unsold, no Selling Commission shall be payable unless that Lot is subject to a Reserve when a Selling Commission Rate of 5% of the Reserve sum shall be payable. Charges for Storage, Insurance, or Other Services may be payable in all instances, at the discretion of TimeLine Auctions Ltd. Sellers are responsible for insuring any Lots that remain unsold, from the time the Hammer falls and sellers must make arrangements for collection of the Unsold goods immediately after the auction ends. Additional costs for delivery of Unsold goods to the Seller may be applied, at the discretion of TimeLine Auctions Ltd.

**Void Sales:**

In the event of any dispute, TimeLine Auctions Ltd shall hold the sale Void pending resolution and no monies shall be paid over until the dispute is finalized. The Seller shall be liable for the return of any monies paid over by TimeLine Auctions in the event of a dispute raised by the Buyer being upheld.

**Acceptance of Selling Terms:**

By submitting any goods for sale by auction, the Seller is deemed to accept all of the Terms and Conditions of Sale and to warrant that he/she is the legal and beneficial owner of all of the goods. The Seller agrees to fully indemnify TimeLine Auctions Ltd against any claims.

**Buyers/Bidders****Caveat Emptor:**

The Buyer must fully satisfy himself as to the description, genuineness, condition or value of any Lot(s) and shall not rely upon the Catalogue, images, or upon any statement made by TimeLine Auctions Ltd regarding any Lot. TimeLine Auctions Ltd act solely as agent for the Seller and all matters pertaining to the sale of any Lot are matters between the Seller and Buyer.

**Bidder Registration:**

All persons intending to bid at any auction, whether in person or by Absentee Bid, shall Register their personal details with TimeLine Auctions Ltd prior to bidding. Buyers may be asked to provide an acceptable form of proof of identity and proof of address. TimeLine Auctions Ltd reserves the absolute right to refuse to register any Bidder or to refuse any Bid at their sole discretion and without stating any reason. Bidders may register in advance of the date of any auction or on the day of the sale.

**Agents:** All bidders shall be deemed to be acting as principal in their bidding and shall be personally accountable for all bid amounts, premiums, VAT, and any other costs. Should any bidder wish to appoint an agent to bid on their behalf, this must be authorised by TimeLine Auctions Ltd in advance of the sale and a deposit may be required. Any such arrangements shall be subject to normal registration requirements in addition.

**Bidder Numbers:**

All Bidders will be allocated a Bidder Number which must be shown to the Auctioneer at the time of bidding and when the Hammer falls. Buyers are at all times responsible for their Bidder Number Card.

**Absentee Bids:**

Although it is best for Bidders to attend the sale and to make their Bids in person, at the request of a Registered Bidder, TimeLine Auctions Ltd will exercise bids on behalf of any Bidder who is unable to attend the Sale. Instructions to Bid must be in writing and stipulate the Lot Number(s) and Maximum amount of the Bid(s). Bids to 'buy' will not be accepted. The Auctioneer will execute Absentee Bids at his/her discretion depending upon competing bids from the floor or elsewhere. In the event that two Absentee Bids of the same amount are received, then the one first received will have priority. All Bids will be made at the lowest level possible. There is no charge for this Service but TimeLine Auctions Ltd will accept no liability for errors or for failing to make any Bid.

**Internet Bidding:**

Live on-line bidding arrangements are available. Prospective bidders must register with the service provider directly before the sale. TimeLine Auctions Ltd shall not be responsible for any technical or other failure that might result in bids not being received.

**Telephone Bidding:**

For Lots with a minimum estimate value above £400, telephone bidding arrangements may be available, at the discretion of TimeLine Auctions Ltd and subject to prior arrangement. Telephone facilities are limited and prospective bidders who wish to use this service are strongly advised to confirm the arrangement well in advance of the sale. TimeLine Auctions Ltd shall not be responsible for any technical or other failures that might result in bids not being received.

**Conduct of the Sale:**

The Auctioneer shall conduct the sale entirely at his/her discretion for all matters and his/her decision shall be final and binding on all participants at the sale. The Auctioneer may execute Bids on behalf of absent Bidders or on behalf of Sellers up to the amount of any Reserve. Bidding increments shall be at the discretion of the Auctioneer but shall generally be as set out below:

From £0 to £100 - increments of £5  
 From £100 to £500 - in increments of £20  
 From £500 to £1,000 - in increments of £50  
 From £1,000 to £5,000 - in increments of £200  
 From £5,000 - in minimum increments of £500 or at Auctioneer's discretion

**Buyer's Premium:**

The Buyer shall pay the Buyer's Premium in addition to the Hammer Price on all lots purchased. The Buyer's Premium Rate shall be 15% and VAT will be payable, at the prevailing rate, in addition.

**Liability for Goods:**

The Buyer is responsible for all Goods purchased, from the time the Hammer falls. Any Goods not collected

from the Sale venue on the day of Sale will be removed by TimeLine Auctions Ltd to a place of storage, at their discretion. Storage Charges may become payable for uncollected goods. Unless noted in the Catalogue as being for 'collection only', shipping costs will be invoiced and must be paid, together with all sums due, before goods will be shipped.

**Collection of Goods:**

Most Lots will be present at the Sale venue and may be collected immediately after the Hammer falls, on full payment being made. TimeLine Auctions Ltd, at the specific request of the Buyer, will make arrangements to ship goods to the Buyer's Registered Address at such cost as will be advised by TimeLine Auctions Ltd. Certain Lots, by virtue of size or other difficulty, may not be present at the Sale venue and any Buyer will be required to make prompt arrangements for collection from a storage location designated by TimeLine Auctions Ltd.

**Invoices:**

Invoices will be issued at the Sale venue or, for those not attending, shortly afterwards. Payment in full is required and funds must be fully cleared before any Goods may be collected or shipped.

**Payment:**

Payment becomes due at the time the Hammer falls. Settlement of Invoices is required within 7 days of the date of the Sale. Interest, at 5% above the prevailing Lloyds TSB bank base rate, will be payable for late payment. TimeLine Auctions Ltd will accept payment by any of the following methods:

Cash in Pounds Sterling - up to a maximum of £5,000 at any one Sale  
 Cash in Euros/\$US - at the rate prevailing - up to a maximum of £5,000 (equivalent)  
 Sterling Cheque - Goods will only be released upon clearance  
 Debit Card - to any amount  
 Credit Card - to any amount - a 3% surcharge will be applied  
 Banker's Draft - to any amount - by prior arrangement  
 Bank Transfer - to any amount - by prior arrangement

**Export Licences:**

For all items potentially requiring an Export Licence, all Buyers with a Registered Address outside the United Kingdom will be required to sign an indemnity waiver on collection of their goods. TimeLine Auctions Ltd will make applications for Export Licences on behalf of a Buyer, after full payment has been cleared, for any Lot, on request. There is no charge for this Service but protracted periods may be required to complete the process. It is the Buyer's sole responsibility to make any necessary enquiries, prior to Bidding, regarding Export Licence procedures. The deferment of an Export Licence shall not be grounds for cancelling the purchase.

**Value Added Tax:**

Value Added Tax at the prevailing rate(s) will be payable in addition on the Buyer's Premiums, shipping costs or on any other Charges made by TimeLine Auctions Ltd. Where so indicated in the Catalogue, VAT may be applied to the Hammer Price for Lots to which the Auctioneer's Margin Scheme does not apply or where Import VAT applies. Buyers with a Registered Address outside of the United Kingdom or European Union may be exempt from some aspects of VAT, provided that any Lots purchased are shipped directly by TimeLine Auctions Ltd to the Buyer's registered foreign address.

**Disputes:**

In the event of any dispute, the Buyer must notify TimeLine Auctions Ltd immediately, but in no case later than fourteen days after the date of the Sale, in writing and stipulating fully the ground for such dispute. During the progress of any dispute, TimeLine Auctions Ltd shall hold any and all monies paid by the Buyer until such time as the matter is finalised. In cases where deliberate forgery is alleged, any such claim shall be subject to review by TimeLine Auctions Ltd who may consult such experts as they deem appropriate. The responsibility for proof of forgery shall rest with the Buyer but disagreement between experts or the inability of an expert to express a definite opinion shall not be sufficient grounds. All disputes shall be resolved in accordance with English law.

**Acceptance of Buying/Bidding Terms:**

Any person bidding at any sale is deemed to have read and accepted these Terms in full and undertakes to fully indemnify TimeLine Auctions Ltd against any claims.





[www.timelineauctions.com](http://www.timelineauctions.com)